



Coopers

Benedictine Road, Cheylesmore, Coventry CV3 6GY

Guide Price £220,000



Benedictine Road

Cheylesmore, Coventry

Three bedroom semi detached home conveniently located within easy walk of the Memorial Park, Railway Station, City Centre, etc. Realistically priced to reflect the need repair and updating. No chain.

Council Tax band: C

Tenure: Freehold

EPC rating: D

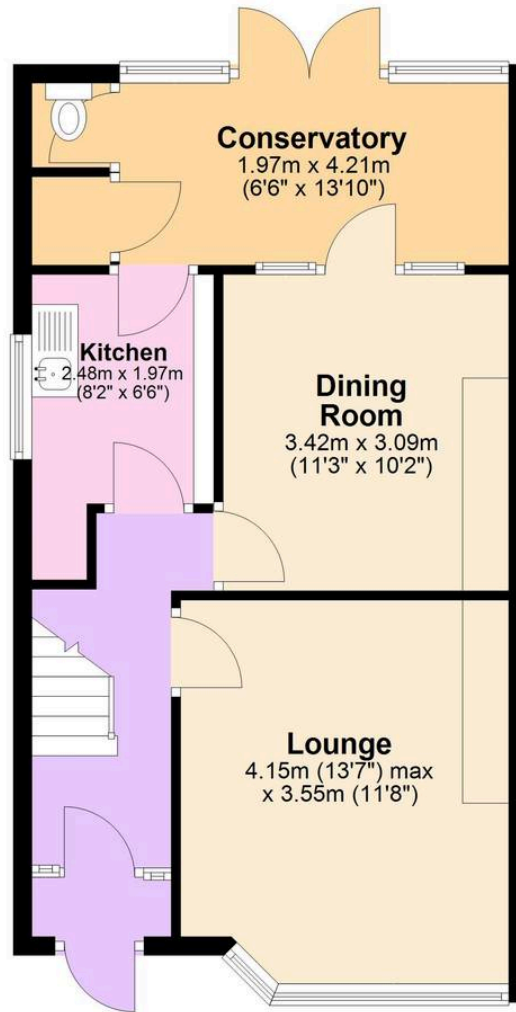
- Semi detached family home
- Two living rooms and kitchen
- Three bedrooms and shower room
- Gardens to front and rear and driveway parking
- Great location within easy walking distance of Memorial Park, Railway Station and City Centre
- Realistically priced to reflect the need for some repair and updating
- No upward chain





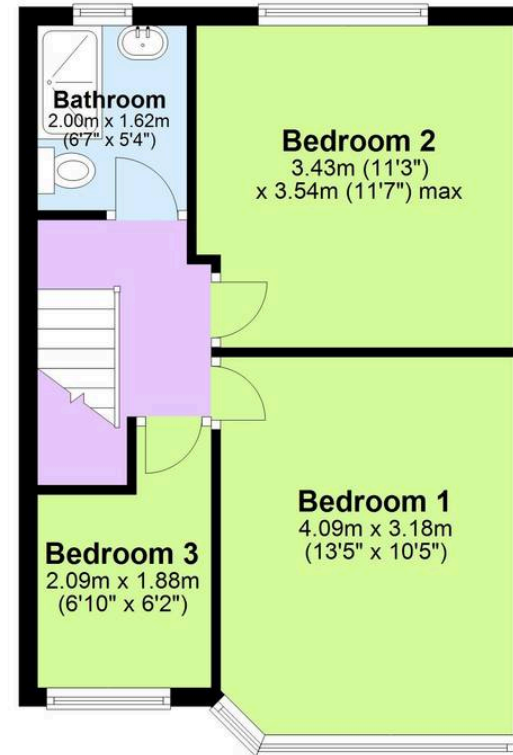
Ground Floor

Approx. 49.0 sq. metres (527.6 sq. feet)



First Floor

Approx. 38.5 sq. metres (414.4 sq. feet)



*Floor plan measurements are approximate and are for illustrative purposes only. While every effort is made to ensure accuracy, no responsibility is taken for any error, omission, or misstatement. Do not scale from this plan.

Plan produced using PlanUp.□□

Coopers Estate Agents

Coopers, 22 New Union Street - CV1 2HN

024 7655 2841 • sales@coopersestateagents.com • www.coopersestateagents.com/



Coopers Chartered Surveyors Ltd, 22 New Union Street, Coventry, West Midlands

CV1 2HN, 024 7655 2841, sales@coopers-cov.com. Company Registration

Number: 6725089 / VAT number: 940 3555 34