



Churchill Close, Hevingham, Norwich, NR10 5PA

welcome to

Churchill Close, Hevingham, Norwich

Exceptional three-bedroom semi-detached home in sought-after Hevingham, offering a refitted kitchen/diner, garden room, study, landscaped garden with outdoor kitchen, parking and garage storage.



Description

Entrance Hall

Radiator, engineered wood floor, stairs to first floor

Lounge

Double glazed window to the front aspect, radiator, TV point, Opens to Kitchen/Diner

Kitchen/Diner

Spacious open plan refitted kitchen/diner with a range of wall and base level units, range gas cooker & hob with double matching hood over, wooden worksurface with matching upstand, butler sink, plumbing for washing machine, built in dishwasher, spotlights, engineered wood floor, understairs cupboard, radiator, double glazed window with view over the rear garden, door to outside, breakfast bar, opens to garden room.

Garden Room

Engineered wood floor, skylight, spotlight, tall radiator, double doors to the garden, double glazed window, TV point.

Study

Fitted desk and shelving, engineered wood floor, spotlights, radiator.

Cloakroom

Fitted with a low level WC, wash hand basin, engineered wood floor.

First Floor Landing

Loft access, built in cupboard, doors to bedrooms and bathroom.

Bedroom 1

Double glazed window, TV point, radiator.

Bedroom 2

Double glazed window, built in wardrobe, radiator.

Bedroom 3

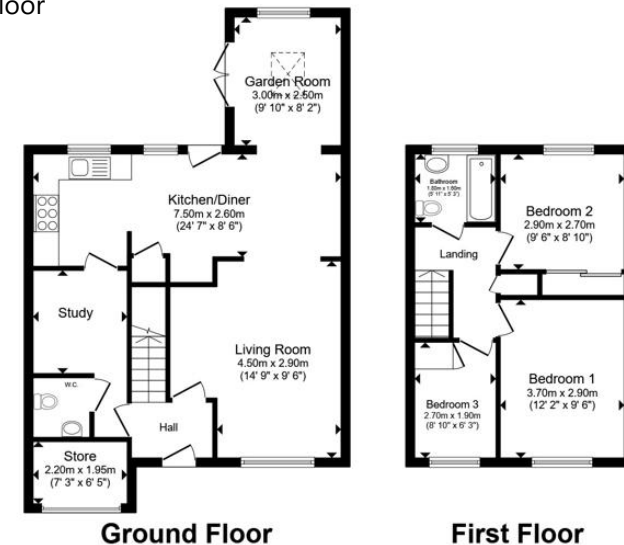
Double glazed window, overstairs cupboard, radiator.

Bathroom

Updated suite to offer a L shape bath with shower over and mixer taps, wash hand basin vanity unit, low level WC, heated towel rail, engineered wood floor and double glazed window.

Outside

To the front of the property is a lawned garden with planted borders and gravel off road parking area leading to a garage (which is part converted) with up and over door and is a useful storage area. To the rear of the property is a stunning enclosed garden with timber decking area, outdoor kitchen area and has lawned gardens with well stocked raised borders there is also a timber shed.



Total floor area 96.3 m² (1,036 sq.ft.) approx

This floor plan is for illustrative purposes only. It is not drawn to scale. Any measurements, floor areas (including any total floor area), openings and orientation are approximate. No details are guaranteed, they cannot be relied upon for any purpose and they do not form part of any agreement. No liability is taken for any error, omission or misstatement. A party must rely upon its own inspection(s). Powered by www.propertybox.io



welcome to

Churchill Close, Hevingham, Norwich

- Exceptional Semi-Detached House
- 3 Bedrooms
- Impressive Open plan Kitchen/Diner/Garden Room
- Home Office/Study
- Off Road Parking & Part Converted Garage/Store

Tenure: Freehold EPC Rating: Awaiting

Council Tax Band: B

£315,000



Please note the marker reflects the postcode not the actual property

view this property online williambrown.co.uk/Property/AYS110350



Property Ref:
AYS110350 - 0004

1. MONEY LAUNDERING REGULATIONS Intending purchasers will be asked to produce identification documentation at a later stage and we would ask for your co-operation in order that there is no delay in agreeing the sale. 2. These particulars do not constitute part or all of an offer or contract. 3. The measurements indicated are supplied for guidance only and as such must be considered incorrect. Potential buyers are advised to recheck measurements before committing to any expense. 4. We have not tested any apparatus, equipment, fixtures or services and it is in the buyers interest to check the working condition of any appliances. 5. Where an EPC, or a Home Report (Scotland only) is held for this property, it is available for inspection at the branch by appointment. If you require a printed version of a Home Report, you will need to pay a reasonable production charge reflecting printing and other costs. 6. We are not able to offer an opinion either written or verbal on the content of these reports and this must be obtained from your legal representative. 7. Whilst we take care in preparing these reports, a buyer should ensure that his/her legal representative confirms as soon as possible all matters relating to title including the extent and boundaries of the property and other important matters before exchange of contracts.

William H Brown is a trading name of Sequence (UK) Limited which is registered in England and Wales under company number 4268443, Registered Office is Cumbria House, 16-20 Hockliffe Street, Leighton Buzzard, Bedfordshire, LU7 1GN. VAT Registration Number is 500 2481 05.



william h brown



01263 735252



Aylsham@williambrown.co.uk



23 Market Place, AYLSHAM, NORWICH,
Norfolk, NR11 6EL



williambrown.co.uk