



Lytham Park, Oundle Peterborough  
**Guide Price £550,000 - £575,000 Freehold**

**Sharman  
Quinney**

# Key Features



- Fully refurbished,
- Showroom condition,
- Double garage and driveway,
- South-West facing garden,
- Two en-suites.

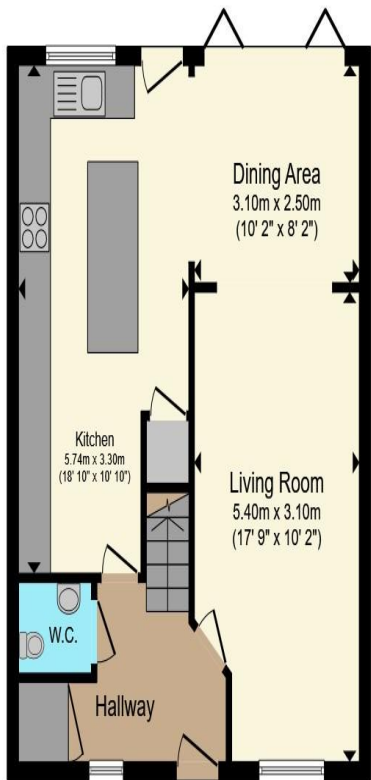
**\*\*Guide Price £550,000 to £575,000\*\*** Situated on a quiet dead-end road, this beautifully presented five-bedroom detached home is finished to an exceptional showroom standard and offers spacious, versatile accommodation throughout. The ground floor boasts a stunning and expansive kitchen/diner, complete with a user-friendly breakfast island, integrated appliances and a double eye-level oven, making it both practical and stylish for modern family living. Rear access to the garden is provided from both bi-fold doors from the dining area or a door within the kitchen area, an extended window also allows plenty of natural light to flood the space. The dining area flows seamlessly into the lounge through a large archway, where a front-facing window creates a bright and inviting living space. The entirety of the ground floor benefits from attractive wood-effect



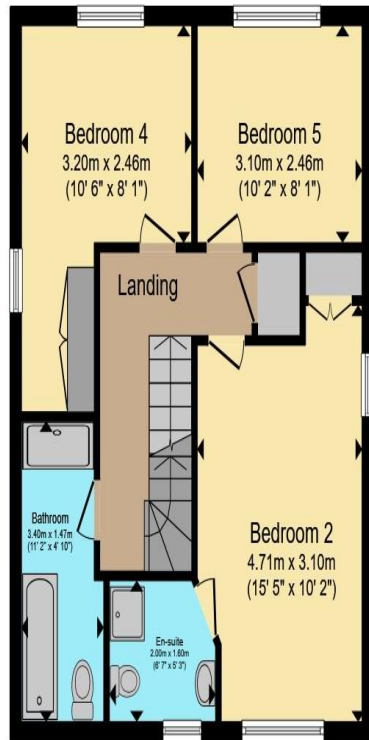
LVT flooring, while a cloakroom and a handy storage cupboard for coats and shoes add further convenience.

Upstairs, the first floor offers three well-proportioned bedrooms, two of which feature built-in wardrobes, along with a modern en-suite and a four-piece family bathroom. The second floor is dedicated to the remaining two bedrooms, both enjoying fantastic views across the surrounding area, with one also benefitting from its own en-suite. Externally, the South-West rear garden is nicely secluded and thoughtfully landscaped, featuring a patio area, astro turf and raised borders, with much of the garden enclosed by attractive stone and brick walls owing to its position. There is also access to the double garage, where one side has been converted into a gym while the other remains a functional garage, along with a good-sized driveway providing ample off-road parking.

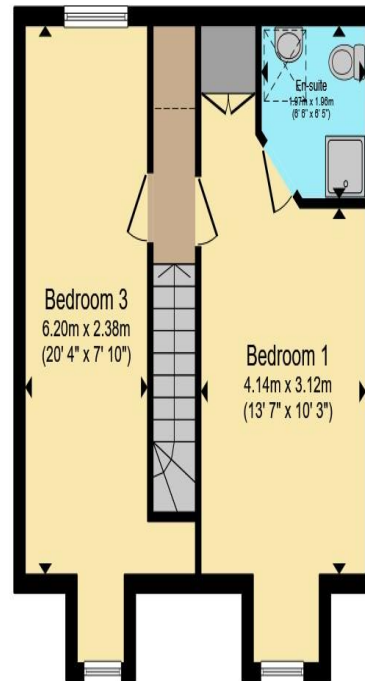




**Ground Floor**



**First Floor**



**Second Floor**

Total floor area 142.5 m<sup>2</sup> (1,534 sq.ft.) approx

This floor plan is for illustrative purposes only. It is not drawn to scale. Any measurements, floor areas (including any total floor area), openings and orientation are approximate. No details are guaranteed, they cannot be relied upon for any purpose and they do not form part of any agreement. No liability is taken for any error, omission or misstatement. A party must rely upon its own inspection(s). Powered by [www.propertybox.io](http://www.propertybox.io)

**Sharman  
Quinney**

To view this property call Sharman Quinney on:  
**01832 274567**

# Selling your property?

Contact us to arrange a **FREE** home valuation.

 01832 274567

 The Old Town Hall Market Place, Oundle, Peterborough, Cambridgeshire, PE8 4BQ

 [oundle@sharmanquinney.co.uk](mailto:oundle@sharmanquinney.co.uk)

 [www.sharmanquinney.co.uk](http://www.sharmanquinney.co.uk)



 SCAN ME



Sharman Quinney Holdings Limited is registered in England and Wales under company number 4174227, Registered Office is Cumbria House, 16-20 Hockliffe Street, Leighton Buzzard, Bedfordshire, LU7 1GN. VAT Registration Number is 500 2481 05.

1: These particulars do not constitute part or all of an offer or contract. 2: The measurements indicated are supplied for guidance only and as such must be considered incorrect. 3: Potential buyers are advised to recheck the measurements before committing to any expense. 4: Sharman Quinney has not tested any apparatus, equipment, fixtures, fittings or services and it is the buyers interests to check the working condition of any appliances. 5: Sharman Quinney has not sought to verify the legal title of the property and buyers must obtain verification from their legal representative. 6: Intending purchasers will be asked to produce identification documentation at a later stage and we would ask your co-operation in order that there will be no delay in agreeing the sale. Ref: OUN202919 - 0005

