



Ffos Y Cerridden, £190,000

- Council Tax Band D
- Three well-proportioned bedrooms
- Spacious reception room
- Fitted kitchen
- Garage with ample space
- Private driveway included
- Beautiful garden area
- Ideal for families and couples
- EPC Rating: C



 3  1  1



About the property

A lovely family home, offering a blend of comfort and convenience. The property boasts three well-proportioned bedrooms, a single bathroom, and a reception room, providing plenty of space for relaxation and entertainment.

The heart of this home is undoubtedly its kitchen, where you will find everything you need to create wonderful meals. This room encourages both casual dining and festive gatherings.

One of the standout features of this property is its garage. This added facility provides ample space for parking and storage, making it a perfect attribute for those with multiple vehicles or for those who require additional storage space. This home also comes with the added bonus of driveway for parking, giving you peace of mind and reducing the stress of finding a parking spot.

The property also benefits from a beautiful garden. This outdoor space is ideal for those who enjoy spending time in the outdoors, be it for gardening, hosting barbecues, or simply basking in the sun.

Situated in a prime location, this property is in proximity to local amenities and schools, making it a perfect fit for those who value convenience and easy access to daily necessities.

The property falls under council tax band D. Please note that as an estate agent, I recommend potential buyers to confirm these details.

Accommodation

Ground Floor

Hallway

Living Room

24' 8" x 8' 4" (7.52m x 2.54m)

Kitchen/ Dining Room

17' 11" x 9' 9" (5.46m x 2.97m)

First Floor

Landing

Bedroom One

13' 2" x 9' 1" (4.01m x 2.77m)

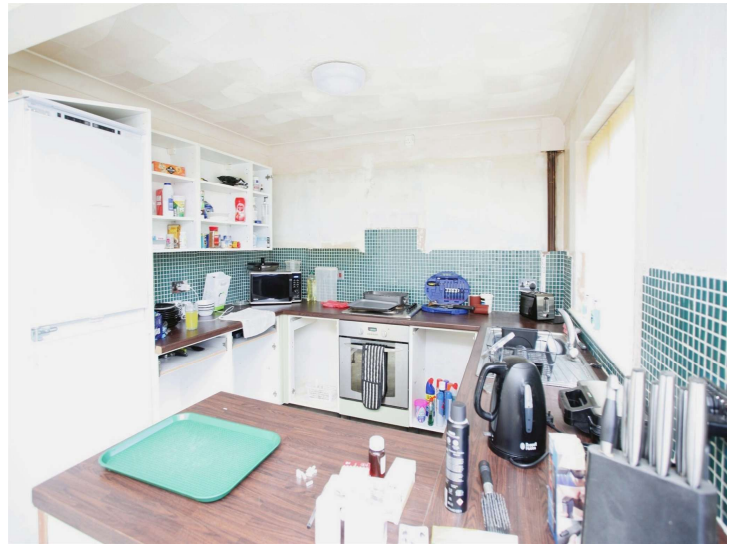
Bedroom Two

10' 11" x 10' 6" (3.33m x 3.20m)

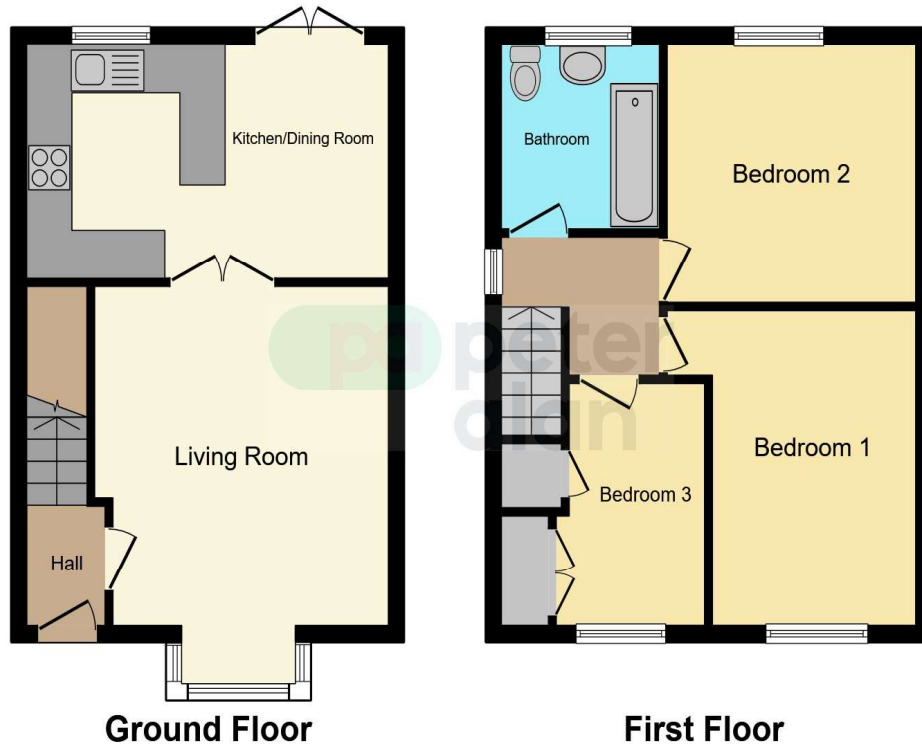
Bedroom Three

10' 5" x 6' 6" (3.17m x 1.98m)

Bathroom



Floorplan



This floor plan is for illustrative purposes only. It is not drawn to scale. Any measurements, floor areas (including any total floor area), openings and orientation are approximate. No details are guaranteed, they cannot be relied upon for any purpose and they do not form part of any agreement. No liability is taken for any error, omission or misstatement. A party must rely upon its own inspection(s). Powered by www.focalagent.com

Important Information

Note while we endeavour to make our sales details accurate and reliable, if there is any point which is of particular interest to you, please contact the office and we will be pleased to confirm the position for you. We have not personally tested any apparatus, equipment, fixtures, fittings or services and cannot verify they are in working order or fit for their purposes. Nothing in these particulars is intended to indicate that carpets or curtains, furnishings or fittings, electrical goods (whether wired or not). Gas fires or light fittings or any other fixtures not expressly included form part of the property offered for sale. This computer generated Floorplan, if applicable, is intended as a general guide to the layout and design of the property. It is not to scale and should not be relied upon for dimensions. Tenure: We cannot confirm the tenure of the property as we have not had access to the legal documents. The buyer is advised to obtain verification from their solicitor or surveyor.

Peter Alan Limited is registered in England and Wales under company number 2073153, Registered Office is Cumbria House, 16-20 Hockliffe Street, Leighton Buzzard, Bedfordshire, LU7 1GN. VAT Registration Number is 500 2481 05. For activities relating to regulated mortgages and non-investment insurance contracts, Peter Alan Limited is an appointed representative of Connells Limited which is authorised and regulated by the Financial Conduct Authority. Connells Limited's Financial Services Register number is 302221. Most buy-to-let