



Ludlow Close, Newbury, RG14 2RH

£220,000

 1  1  1

- No onward chain
- Quiet cul-de-sac
- Good sized south facing garden with side access
- Train station, shops and footpaths nearby
- Upvc double glazing
- One bedroom
- Opportunity to update
- Parking
- Easy access to A4, A34 and M4
- Gas-fired central heating



NO ONWARD CHAIN. Located in a small, quiet cul-de-sac is a one bedroom end terrace home with good sized south facing garden. The property would benefit from some general updating allowing the new owner to put their own mark on it. Locally there are a few shops nearby, footpaths, and the mainline rail station at Newbury Racecourse is within walking distance. The neat and tidy accommodation consists of kitchen with door to the patio and garden, living/dining room, master bedroom with good storage, and bathroom. Outside the sunny rear garden is laid mainly to grass and there is a path and gate to the front of the house. There is designated parking immediately in front of the house. Benefits include upvc double glazing and gas fired central heating.





Approximate Gross Internal Area
39.63 sq m / 426.57 sq ft

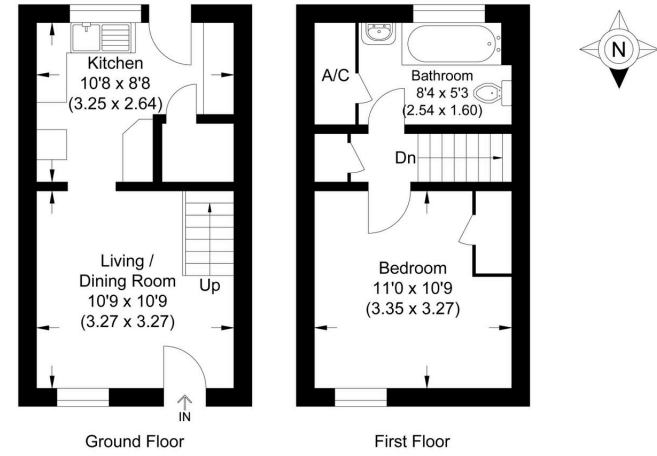
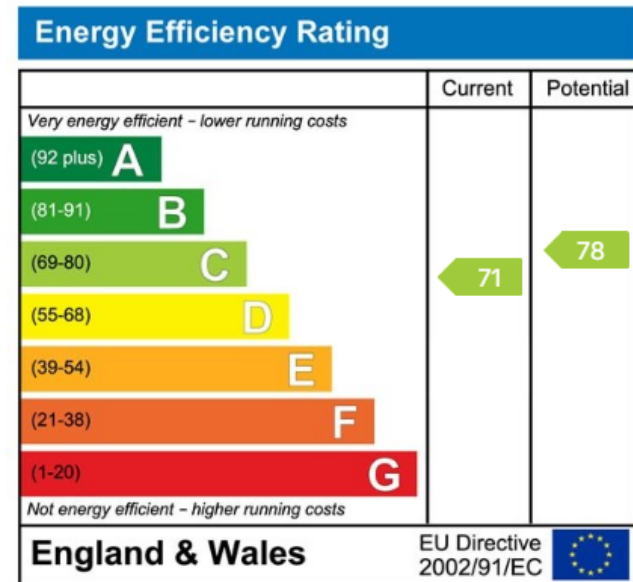


Illustration for identification purposes only, measurements are approximate, not to scale.



☎ 01635 523777 (Sales)

☎ 01635 523880 (Lettings)

🌐 www.downer.co.uk