

FLETCHERS

ESTATE AGENTS



Abinger Road, W4

£2,999,950

A rare opportunity to acquire a beautifully presented detached house on Abinger Road, featuring one of the largest gardens in Bedford Park. The property combines original period charm with carefully considered contemporary design, creating a home that is both full of character and perfectly suited to modern family life. Over the years, the current owners have thoughtfully enhanced the property, preserving its architectural heritage while introducing modern finishes and practical living spaces that meet the demands of 21st-century living.



The ground floor has been extended to create an exceptional family and entertaining space, centred around a stunning split-level kitchen, dining and reception area. Cantilevered dual-aspect bi-fold windows open onto the garden, flooding the space with natural light and creating a seamless connection between the house and garden, perfectly suited to indoor-outdoor living and entertaining. The property also offers exciting scope for further extension, with potential to convert the loft into two additional bedrooms and a bathroom, as well as extending into the side access area, subject to the necessary consents.

The garden is truly exceptional, particularly for such a prime Bedford Park location. A large decking area sits directly outside the reception space, while the garden extends diagonally to approximately 95 feet in length, bordered by mature trees that provide a high degree of privacy.

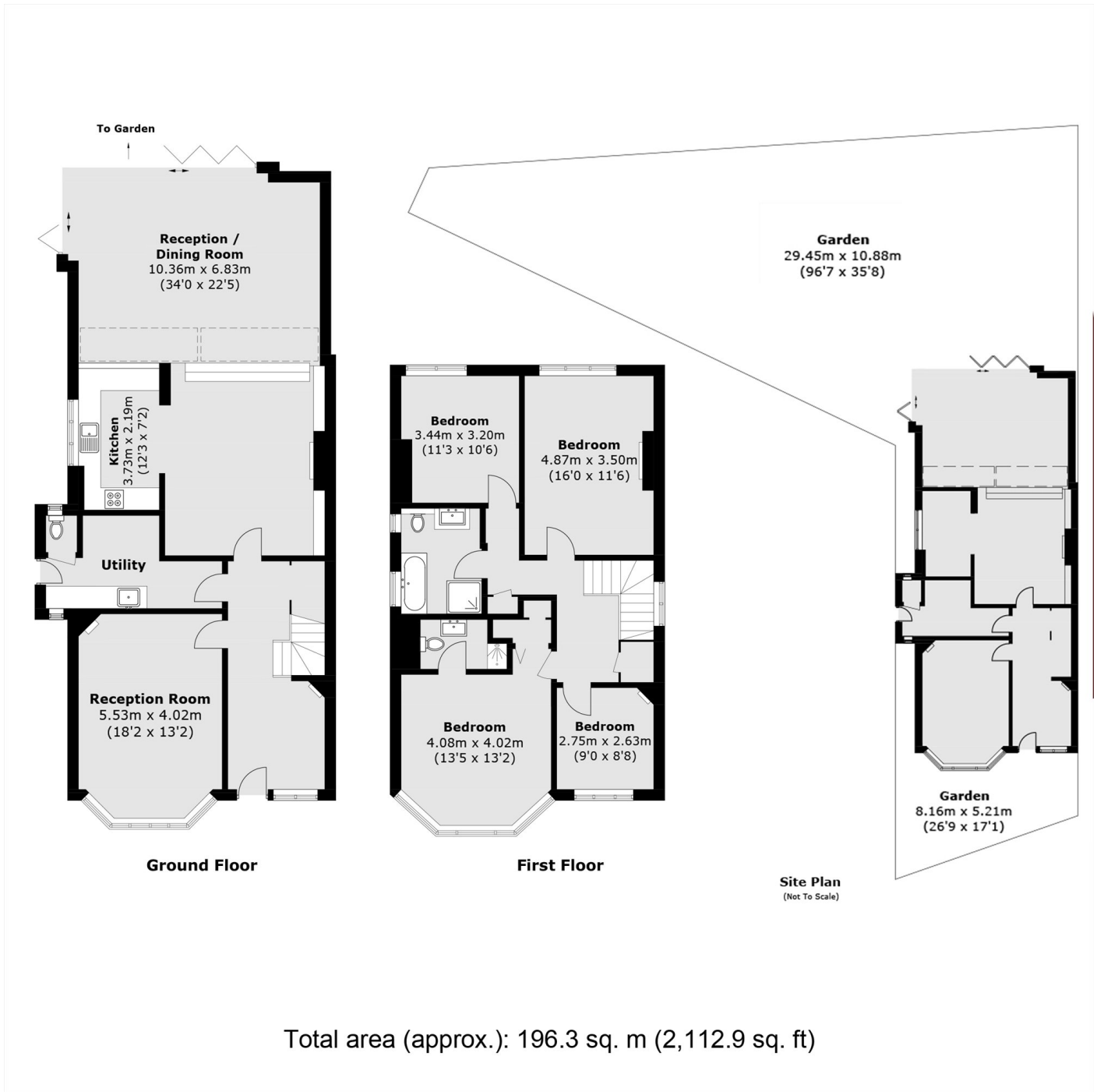
Within the leafy Bedford Park, Abinger Road is conveniently located a short walk away from Turnham Green station (District Line) and the shops and restaurants on the terrace. Bus stops are also around the corner on Bath Road which has easy access to Holland Park and Central London.

- Detached Home • Four Bedrooms • Two Bathrooms •
- Unique Large Garden • Potential To Extend • Potential for Off-Street Parking •



FLETCHERS

ESTATE AGENTS



Fletchers Chiswick Turnham Green Sales
58 Turnham Green Terrace
London
W4 1QP
020 8987 3000
chiswicksales@fletcherestates.com

Energy Rating: D We aim to make our particulars both accurate and reliable. However they are not guaranteed; nor do they form part of an offer or contract. If you require clarification on any points then please contact us, especially if you're traveling some distance to view. Please note that appliances and heating systems have not been tested and therefore no warranties can be given as to their good working order