



GOSBERTON ROAD, SW12

£1,075,000

- Open Plan Living
- Private Garden
- Split Level
- Share of Freehold
- Nightingale Triangle
- Energy Rating C





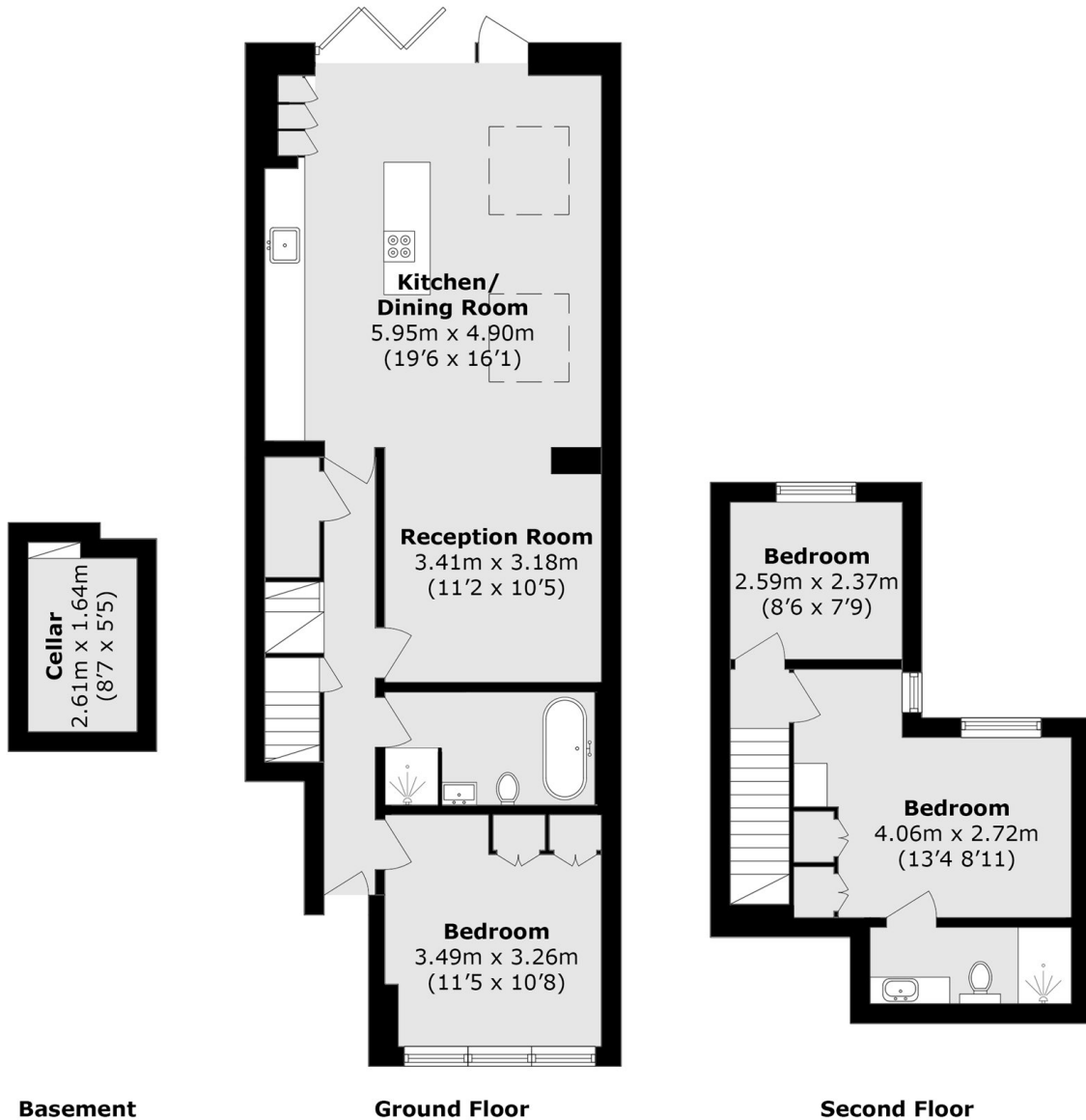
ABOUT THE HOME

Situated in the highly regarded Nightingale Triangle of Balham is this beautiful 3 bedroom 2 bathroom split level apartment. It has been recently renovated throughout to an incredible standard, spread over the ground and first floors. It features a large open plan kitchen living space, with bifold doors onto a landscaped private garden.

Located just moments from Balham underground and mainline station, Gosberton Road lies just a short distance from the heart of Balham and all the bars, restaurants and shops it has to offer. The green spaces of both Wandsworth and Tooting Bec Commons are also within easy reach.







Total area (approx.): 100.6 sq. m (1082.9 sq. ft)

JACKSONS BALHAM

8-11 Balham Station Road,
 London, SW12 9SG
 Sales: 020 8675 6555
 Lettings: 020 8675 6565

Energy Rating: We aim to make our particulars both accurate and reliable. However they are not guaranteed; nor do they form part of an offer or contract. If you require clarification on any points then please contact us, especially if you're traveling some distance to view. Please note that appliances and heating systems have not been tested and therefore no warranties can be given as to their good working order.