



ABBOTSWOOD ROAD, SW16

£2,250,000

- Semi detached five bed house
- Huge common-sided garden
- Private parking & garage
- Heated swimming pool
- Popular road by the common
- Energy rating: D





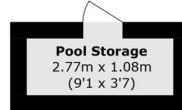
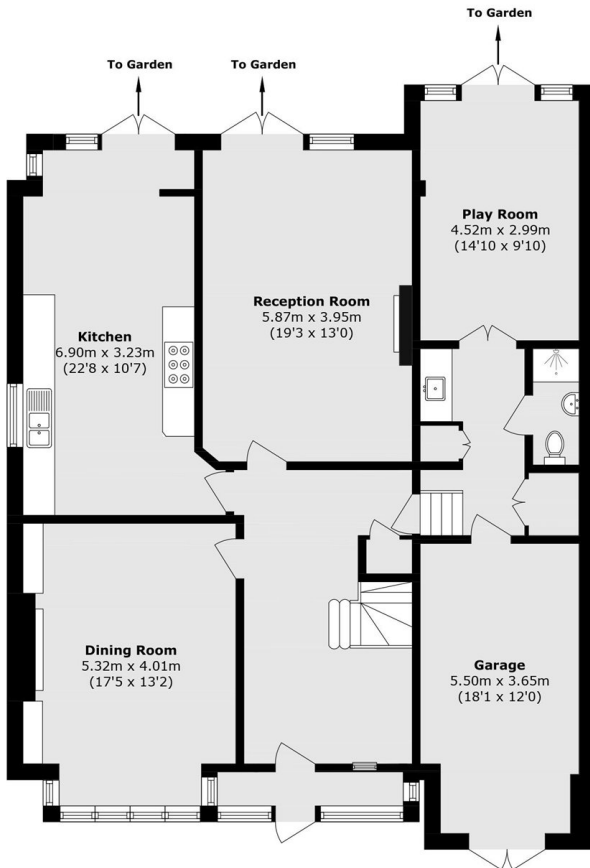
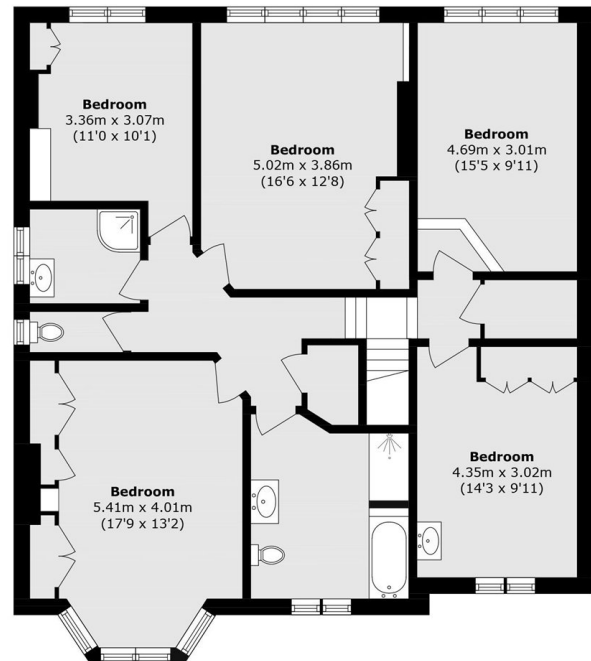
## ABOUT THE HOME

A substantial semi-detached five bed family home located on a very popular tree-lined road just off Tooting Bec Common and Streatham Hill station. The house is a short 5 min drive to the Heaver Estate in Balham. It includes off-street parking, a large garage and a 200 ft+ landscaped garden backing onto Tooting Bec Common, complete with an additional heated swimming pool. This is the perfect space for entertaining families and friends.

Abbotswood Road is a located just off Drewstead road bordering Balham. Streatham Hill, Balham mainline and Balham underground stations are all close by as are the green open spaces of Tooting Bec Common. Residents have access to a range of amenities, including excellent schools and independent coffee shops, pubs, bars and restaurants in Balham and Streatham Hill.






**Ground Floor**

**Ground Floor**

**First Floor**

Total area (approx.): 244.5 sq. m (2631.7 sq. ft)

Outbuilding area (approx.): 2.9 sq. m (31.2 sq. ft)

**JACKSONS STREATHAM**

1-3 De Montfort Parade,  
 Streatham High Road,  
 Sales: 020 8487 3179  
 Lettings: 020 8487 3180

Energy Rating: D We aim to make our particulars both accurate and reliable. However they are not guaranteed; nor do they form part of an offer or contract. If you require clarification on any points then please contact us, especially if you're traveling some distance to view. Please note that appliances and heating systems have not been tested and therefore no warranties can be given as to their good working order.