



CONNAUGHT PLACE

MAYFAIR, W1K

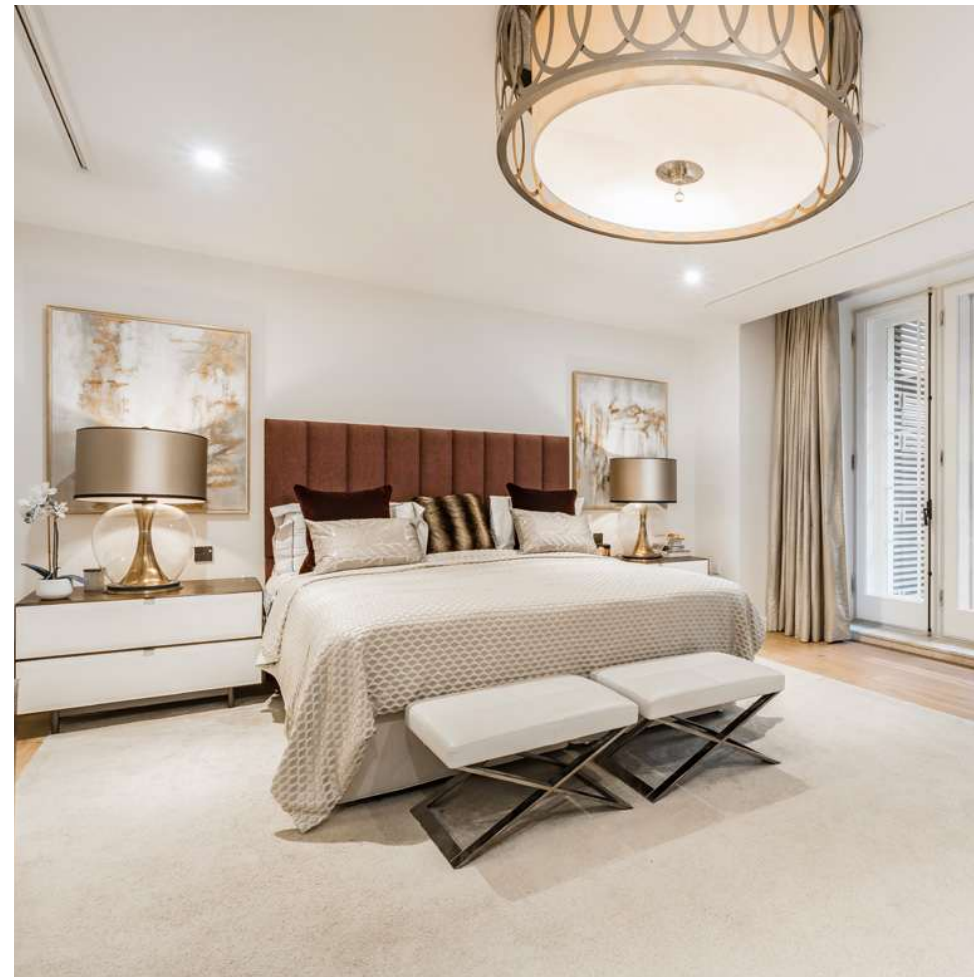
Four generously sized bedrooms are accompanied by luxury en suite facilities, including relaxation areas and internal courtyards.





Connaught Place offers a 24-hour concierge service operating from the main entrance lobby, providing visitor and delivery monitoring to ensure continuous security. The beautiful panelled walls, herringbone-patterned timber floor, high ceilings and decorative coving all emphasise the gracious proportions of the formal reception room. Full-height windows face south across the terrace towards Hyde Park and allow plenty of natural light.

The terrace has a private outdoor entertaining space, accessed from the dining room or courtyard, with privacy ensured by border shrubs and mature trees, and illuminated by external ground lighting. The property has an exclusive media room to entertain guests, whilst the private gym includes sauna and steam room facilities.



Smoke Detector



Lower Ground Floor



Ground Floor

TOTAL AREA (APPROX.) 6,134.4 SQ. FT (569.9 M)
(EXCLUDING VOID)

- FOUR DOUBLE BEDROOMS
- FOUR LUXURY EN SUITE BATHROOMS
- GRAND FORMAL LIVING AND DINING ROOM
- BESPOKE MEDIA ROOM AND GYM
- SAUNA AND STEAM ROOM
- INTERNAL COURTYARDS AND EXTERNAL TERRACE



WETHERELL
MAYFAIR'S FINEST PROPERTIES

102 Mount Street, London, W1K 2TH
020 7529 5566 • wetherell.co.uk

Wetherell have no authority to make or give any representations or warranties in relation to the property. These particulars do not form part of any offer or contract and must not be relied upon as statements or representations of fact. Any areas, measurements or distances are approximate. The text, photographs and plans are for guidance only and are not necessarily comprehensive. It should not be assumed that the property has all the necessary planning, building regulation or other consents and Wetherell have not tested any services, equipment or facilities. Purchasers must satisfy themselves by inspection or otherwise. EPC: C. January 2026.