



Harmony House

Nuthatch Close | Ewshot | Farnham | GU10 5TN

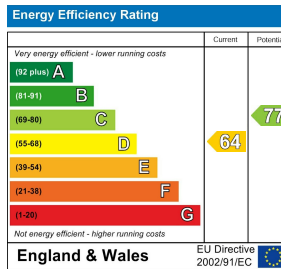
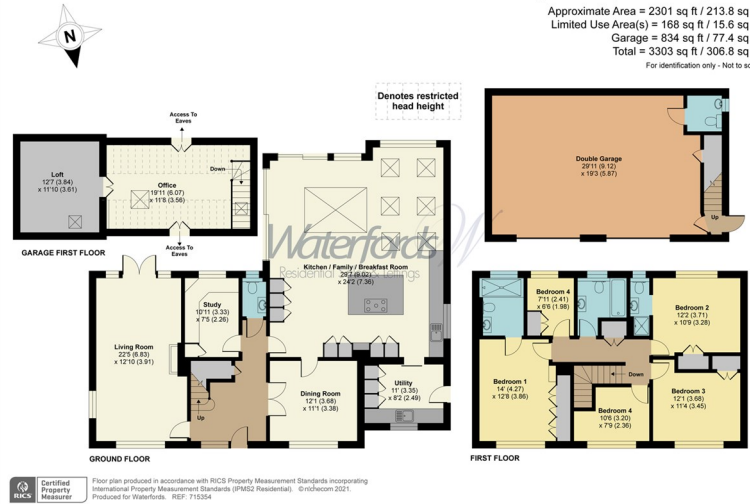
£5,600 PCM

Waterfords 
Residential Sales & Lettings



Nuthatch Close, Ewshot, Farnham, GU10

Approximate Area = 2301 sq ft / 213.8 sq m
 Limited Use Area(s) = 168 sq ft / 15.6 sq m
 Garage = 834 sq ft / 77.4 sq m
 Total = 3303 sq ft / 306.8 sq m
 For identification only - Not to scale



Description

Situated on the popular Marlborough Hill Estate, this detached residence, constructed by Charles Church, boasts a large plot providing a five bedroom home with a detached garage with car lift with the space to hold 3 to 4 cars, including its own office space above. Available July 2026

Key features

- Five Bedrooms Detached Family Home
- Semi-Rural Location
- Two Ensuites and Further Family Bathroom
- Private Enclosed Rear Garden, Hosting Large Patio Area and Summer House
- Long Term Let
- Detached Garage with Car Lift, Able to Hold 3 to 4 cars, Protected by Electric Gates
- Four Receptions Rooms
- Private Office Space Above Garage with Wash Room
- Large Kitchen Living Space with Bi-fold Doors Leading onto Garden
- Available From July 2026



39 The Hart Centre
 Fleet
 Hampshire
 GU51 3LA
 01252 623330
 hampshirelettings@waterfords.co.uk
 https://www.waterfords.co.uk/