

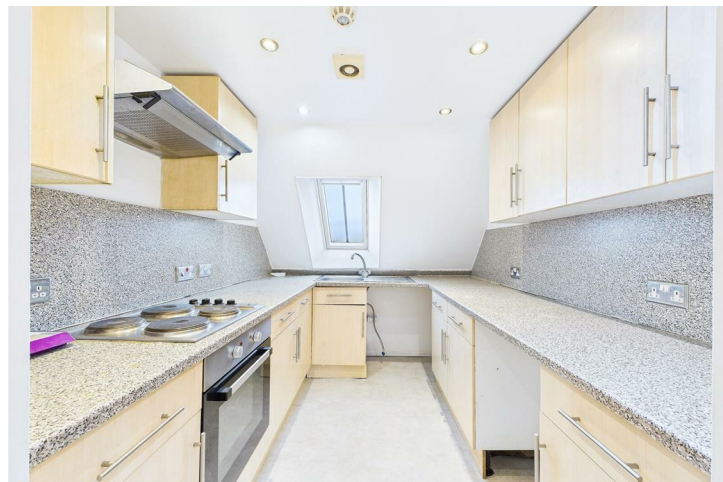
The Attic Flat 11 Alexandra Road, The Reading House, Clevedon, BS21 7QH

£975 Per Calendar Month

marktempler

RESIDENTIAL LETTINGS





PROPERTY TYPE

Flat



LOCATION

Upper Clevedon



BEDROOMS

2



RECEPTION ROOMS

1



BATHROOMS

1



WARMTH

Gas central heating



PARKING

On Street



OUTSIDE SPACE

None here



EPC RATING

E



COUNCIL TAX BAND

A

Top floor apartment  
Two generously sized bedrooms  
Holding deposit - £225.00  
Security deposit - £1,125.00  
EPC rating - E  
Council tax band - A

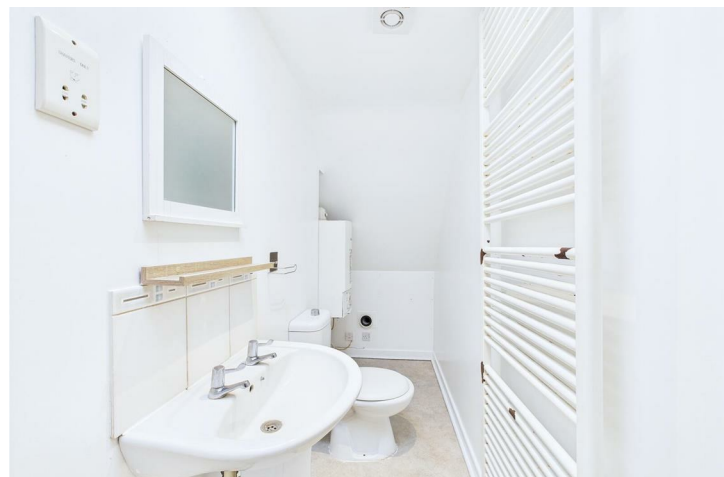
## What will it cost to rent this property?

When you submit a completed application form, we will discuss the details with the Landlord. If the Landlord is happy to proceed you will be required to pay:

1. Holding deposit, equivalent to 1 week's rent. This will reserve the property.

Once references are complete, you will be asked to pay:

2. First month's rent
3. Security deposit, equivalent to 5 weeks' rent (for rents under £50,000 per year). This covers damages or defaults on the part of the tenant during the tenancy.



Skylights throughout, allowing plenty of natural light

Kitchen includes space for appliances

Situated on Alexandra Road, one of Clevedon's most desirable residential areas

On street parking

Available From:

This property is available to move into from approximately 28th August 2026



**Utilities**  
Mains water and drainage, mains electric supply, gas central heating. This information has been provided by the Landlord and is correct to the best of our knowledge.

**Broadband**  
Ultrafast broadband available with highest available download speed 1800 Mbps and highest available upload speed 220 Mbps. This information is sourced via [checker.ofcom.org.uk](http://checker.ofcom.org.uk), we advise you make your own enquires.

**Mobile phone coverage / signal**  
There is limited to likely coverage indoors depending on the provider and likely coverage outdoors with a range of providers. This information is sourced via [checker.ofcom.org.uk](http://checker.ofcom.org.uk), we advise you make your own enquires.

For the latest properties and local news follow Mark Templer Residential Lettings on:



