






GATLIFF ROAD SLOANE SQUARE SW1W
£6,650 PER MONTH AVAILABLE 02/09/2026

Hamptons
THE HOME EXPERTS

{ THE PARTICULARS

Gatliff Road Sloane Square SW1W

£6,650 Per Month
Furnished

-  3 Bedrooms
-  2 Bathrooms
-  1 Reception

Features

- Three bedrooms, - Two bathrooms, - Fourth Floor (with lift), - Enclosed Balcony, - 24hrs concierge, - Residents spa gym, - Comfort Cooling, - Approx. 1,329 Sq. Ft, - Council Tax Band G, - Furnished (flexible)

Council Tax

Council Tax Band G

Hamptons
7 Lower Sloane Street
Sloane Square, London, SW1W 8AH
020 7824 8242
sloanesquarelettings@hamptons.co.uk
www.hamptons.co.uk

{ A CONTEMPORARY THREE BEDROOM APARTMENT WITH BALCONY AND CONCIERGE

The Property

A contemporary three bedroom flat situated on the 4th floor of this modern portered building forming part of the Grosvenor Waterside development. The accommodation comprises a modern open plan kitchen with Miele integrated appliances to include a wine cooler and breakfast bar, leading to the generous reception room and enclosed balcony, both with dark hard wood flooring. There is a good size Principal bedroom with fitted cupboards and modern en-suite bathroom with shower and separate bath. Two further double bedrooms and a full family bathroom with shower over bath. The flat further benefits from comfort cooling, utility cupboard housing a Bosch washer dryer, on-site gym, spa and 24 hour concierge. Available 2nd September furnished or unfurnished.

Location

Grosvenor Waterside is ideally located sandwiched between Chelsea and Belgravia providing residents with fantastic transport links and world renowned amenities nearby, Sloane Square underground station is 0.6 miles away offering the District & Circle Lines.



Moore House,
Grosvenor Waterside, SW1W
Approximate Gross Internal Area
121.01 sq m / 1303 sq ft

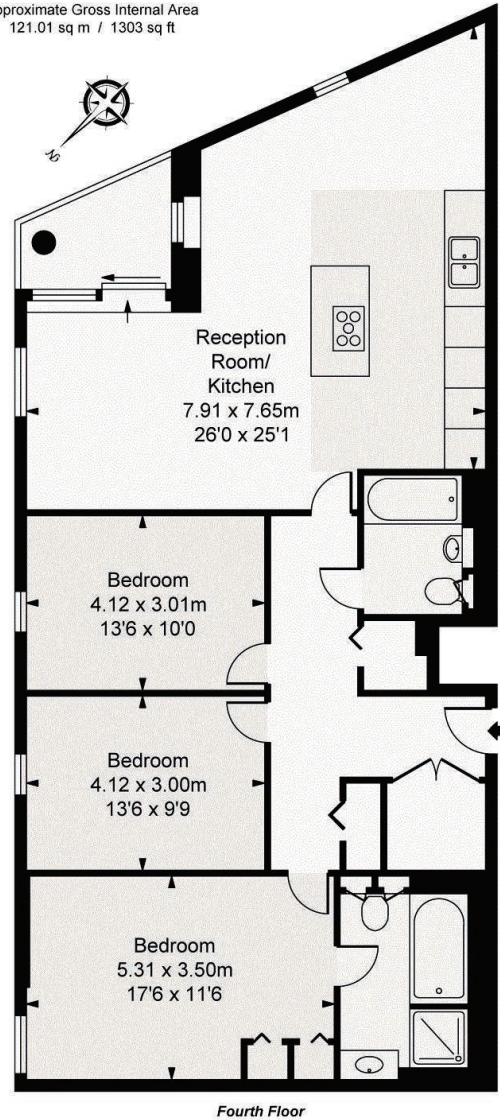


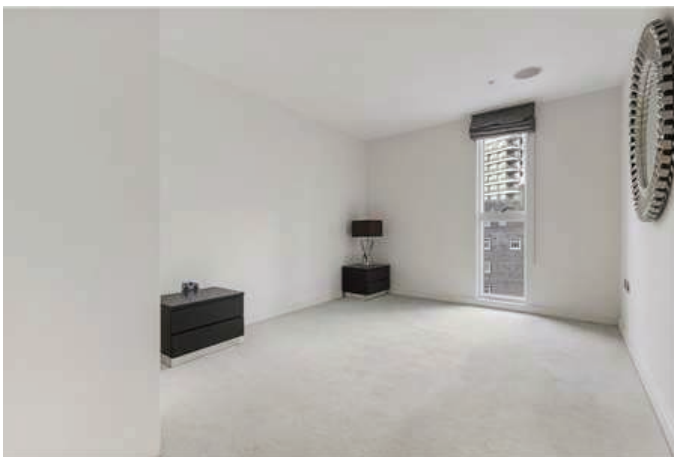
ILLUSTRATION FOR IDENTIFICATION PURPOSES ONLY
ALL MEASUREMENTS ARE MAXIMUM, AND INCLUDE WINDOW BAYS AND WARDROBES WHERE APPLICABLE
THIS PLAN MUST NOT BE REPRODUCED BY ANY OTHER PERSON WITHOUT PERMISSION.

For Clarification

We wish to inform prospective tenants that we have prepared these particulars as a general guide and they have been confirmed as accurate by the landlord. We have not verified permissions, nor carried out a survey, tested the services, appliances and specific fittings. Room sizes are approximate and measurement figures rounded: they are taken between internal wall surfaces and therefore include cupboards/shelves, etc. Accordingly, they should not be relied upon for

carpets and furnishings. It should also be noted that all fixtures and fittings, carpeted, curtains/blinds, kitchen equipment and garden statuary, whether fitted or not, are deemed removable by the landlord unless specifically itemised with these particulars. Please enquire in office or on our website for details on holding deposit and tenancy deposit figures.

Energy Efficiency Rating		Current	Potential
Band A	92-100		
Band B	81-91		
Band C	69-80		
Band D	55-68		
Band E	39-54		
Band F	21-38		
Band G	1-20		
		84	84
<small>For more information on energy ratings</small> <small>For more information on energy ratings</small> <small>For more information on energy ratings</small> <small>For more information on energy ratings</small> <small>For more information on energy ratings</small> <small>For more information on energy ratings</small> <small>For more information on energy ratings</small>		<small>EU Directive</small> <small>2002/91/EC</small>	
England & Wales			



ESTABLISHED 1869
lh
THE HOME EXPERTS