



Sittang Close, COLCHESTER CO2 9RB

welcome to

Sittang Close, COLCHESTER

NO CHAIN! A practical 4/5 bedroom home for sale in a residential area of Colchester, offering spacious accommodation for the growing family with 2/3 reception rooms, convenient access to the town centre, green spaces and schools, plus strong road and rail links to London and across East Anglia.



Entrance Door To:

Entrance Porch

Laminate wood flooring, cupboard, door to:

Entrance Hall

Laminate wood flooring, radiator, stairs to first floor, doors to:

Cloakroom

Vinyl flooring, low level w.c., wash hand basin.

Lounge

Upvc double glazed window to front, two radiators, laminate wood flooring.

Dining Room

Upvc double glazed window to front, radiator, laminate wood flooring, door to:

Kitchen

Comprehensive range of matching base and eye level units, work surfaces, inset stainless steel sink and drainer unit with mixer tap, tiled splashbacks, space for range style cooker with extractor hood over, spaces for washing machine and dishwasher, integrated fridge/freezer, tiled floor, radiator, upvc double glazed window to rear.

Rear Lobby

With external door to rear garden, door to built-in cupboard.

First Floor Accommodation

Landing

Built-in cupboard, carpet, loft access, doors to:

Bedroom One

Upvc double glazed window to front, carpet, radiator, built-in wardrobe.

Bedroom Two

Upvc double glazed window to rear, radiator, carpet, built-in wardrobe.

Bedroom Three

Upvc double glazed window to front, radiator, carpet, built-in wardrobe.

Bedroom Four

Upvc double glazed window to rear, radiator, carpet, built-in cupboard.

Bedroom Five / Study

Upvc double glazed window to front, carpet, radiator.

Family Bathroom

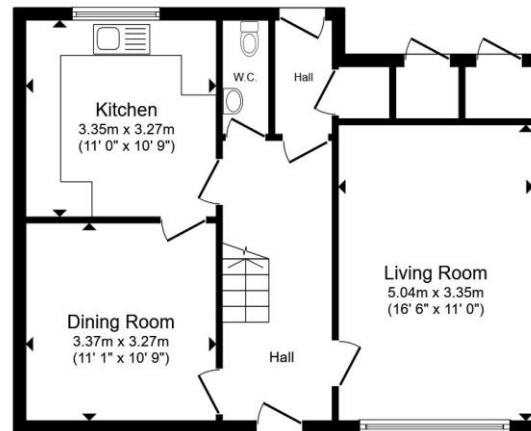
Modern white suite comprising panel enclosed bath with shower over, low level w.c. and wash hand basin, tiled walls, vinyl flooring, radiator, upvc double glazed windows to rear.

Outside

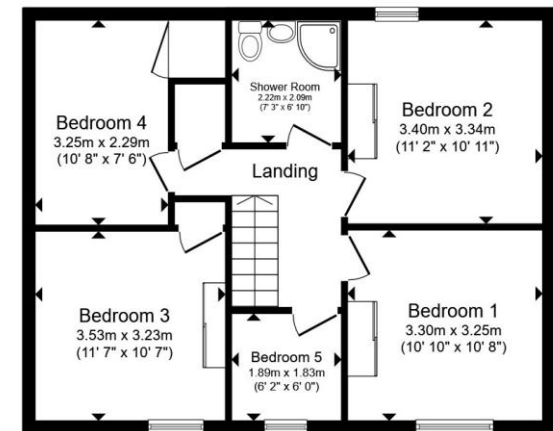
There is a garden area to the front as well as storage cupboards.

The rear garden is part laid to patio and part enclosed decked area, all enclosed by panel fencing with shed.

The property benefits from one allocated parking space.



Ground Floor



First Floor

Total floor area 116.1 m² (1,249 sq.ft.) approx

This floor plan is for illustrative purposes only. It is not drawn to scale. Any measurements, floor areas (including any total floor area), openings and orientation are approximate. No details are guaranteed, they cannot be relied upon for any purpose and they do not form part of any agreement. No liability is taken for any error, omission or misstatement. A party must rely upon its own inspection(s). Powered by www.propertybox.io



view this property online williamhbrown.co.uk/Property/CCS120952



welcome to

Sittang Close, COLCHESTER

- NO ONWARD CHAIN
- Detached Family Home
- Two/Three Reception Rooms
- Cloakroom & Family Bathroom
- Four/Five Bedrooms
- Enclosed Rear Garden
- Allocated Parking

Tenure: Freehold EPC Rating: C
Council Tax Band: C

£290,000



directions to this property:

Refer to map



Please note the marker reflects the
postcode not the actual property

view this property online [williamhbrown.co.uk/Property/CCS120952](https://www.williamhbrown.co.uk/Property/CCS120952)



Property Ref:
CCS120952 - 0002

1. MONEY LAUNDERING REGULATIONS Intending purchasers will be asked to produce identification documentation at a later stage and we would ask for your co-operation in order that there is no delay in agreeing the sale. 2. These particulars do not constitute part or all of an offer or contract. 3. The measurements indicated are supplied for guidance only and as such must be considered incorrect. Potential buyers are advised to recheck measurements before committing to any expense. 4. We have not tested any apparatus, equipment, fixtures or services and it is in the buyers interest to check the working condition of any appliances. 5. Where an EPC, or a Home Report (Scotland only) is held for this property, it is available for inspection at the branch by appointment. If you require a printed version of a Home Report, you will need to pay a reasonable production charge reflecting printing and other costs. 6. We are not able to offer an opinion either written or verbal on the content of these reports and this must be obtained from your legal representative. 7. Whilst we take care in preparing these reports, a buyer should ensure that his/her legal representative confirms as soon as possible all matters relating to title including the extent and boundaries of the property and other important matters before exchange of contracts.

William H Brown is a trading name of Sequence (UK) Limited which is registered in England and Wales under company number 4268443, Registered Office is Cumbria House, 16-20 Hockliffe Street, Leighton Buzzard, Bedfordshire, LU7 1GN. VAT Registration Number is 500 2481 05.



william h brown



01206 577772



Colchester@williamhbrown.co.uk



8 Culver Street West, COLCHESTER, Essex, CO1
1JG



williamhbrown.co.uk