



Tindale Road, SOUTHAMPTON SO16 9EW

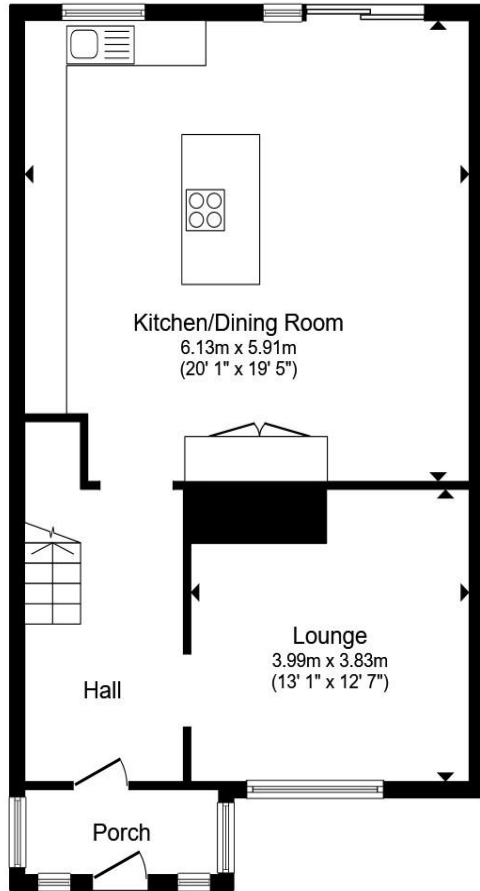
welcome to

Tindale Road, SOUTHAMPTON

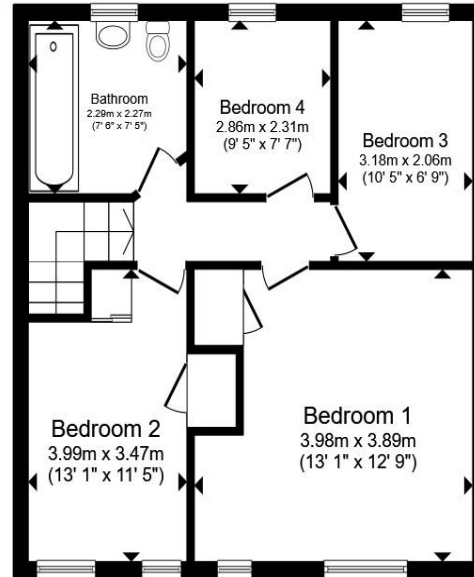
Spacious Four-Bedroom Mid-Terraced Home – Tindale Road, Maybush, Southampton

Situated in the popular residential area of Maybush, this well-presented four-bedroom mid-terraced property offers modern living throughout, making it an ideal choice for families or investors alike.





Ground Floor



First Floor

Entrance Porch

Entrance Hall

Lounge

13' 1" max x 12' 7" max (3.99m max x 3.84m max)

Kitchen/Dining Room

20' 1" max x 19' 5" max (6.12m max x 5.92m max)

Landing

Bedroom 1

13' 1" max x 12' 9" max (3.99m max x 3.89m max)

Bedroom 2

13' 1" max x 11' 5" max (3.99m max x 3.48m max)

Bedroom 3

10' 5" x 6' 9" (3.17m x 2.06m)

Bedroom 4

9' 5" x 7' 7" (2.87m x 2.31m)

Bathroom

7' 6" max x 7' 5" max (2.29m max x 2.26m max)

Total floor area 110.0 m² (1,184 sq.ft.) approx

This floor plan is for illustrative purposes only. It is not drawn to scale. Any measurements, floor areas (including any total floor area), openings and orientation are approximate. No details are guaranteed, they cannot be relied upon for any purpose and they do not form part of any agreement. No liability is taken for any error, omission or misstatement. A party must rely upon its own inspection(s). Powered by www.propertybox.io



welcome to

Tindale Road, SOUTHAMPTON

- No Onward Chain
- Four Bedroom Property
- Large Kitchen/ Diner with Skylight Window & Access to Garden
- Driveway Providing Off Street Parking
- Gas Central Heating & Double Glazing

Tenure: Freehold EPC Rating: C
Council Tax Band: B

£325,000



Please note the marker reflects the postcode not the actual property

check out more properties at fox-and-sons.co.uk



Property Ref:
SOU117784 - 0007

1. MONEY LAUNDERING REGULATIONS Intending purchasers will be asked to produce identification documentation at a later stage and we would ask for your co-operation in order that there is no delay in agreeing the sale. 2. These particulars do not constitute part or all of an offer or contract. 3. The measurements indicated are supplied for guidance only and as such must be considered incorrect. Potential buyers are advised to recheck measurements before committing to any expense. 4. We have not tested any apparatus, equipment, fixtures or services and it is in the buyers interest to check the working condition of any appliances. 5. Where an EPC, or a Home Report (Scotland only) is held for this property, it is available for inspection at the branch by appointment. If you require a printed version of a Home Report, you will need to pay a reasonable production charge reflecting printing and other costs. 6. We are not able to offer an opinion either written or verbal on the content of these reports and this must be obtained from your legal representative. 7. Whilst we take care in preparing these reports, a buyer should ensure that his/her legal representative confirms as soon as possible all matters relating to title including the extent and boundaries of the property and other important matters before exchange of contracts.


fox & sons



02380 225155



Southampton@fox-and-sons.co.uk



32 - 34 London Road, SOUTHAMPTON,
Hampshire, SO15 2AG



fox-and-sons.co.uk