



Pinkmove

Cardiff Road

guide price £260,000- £270,000

- Guide Price: £260,000- £270,000
- No Chain
- Enclosed Rear Garden
- Three Bedrooms & Two Reception Rooms
- Garden Office
- Bay Windows
- Front and Rear Gardens
- Close To Schools, Shops and Amenities with Excellent Transport Links
- EPC Rating: D



 3  3  2

Pinkmove

01633 746088
team@pinkmove.co.uk



About the property

This three-bedroom detached home is located on the sought-after Cardiff Road in Newport, offering a perfect blend of comfort and convenience.

The ground floor features two spacious reception rooms, with the front room boasting an elegant bay window that floods the space with natural light. To the rear a modern kitchen opens out onto an enclosed garden, creating an ideal setting for family living and entertaining.

Upstairs, you'll find three well-proportioned bedrooms, two of which benefit from en suite shower rooms, while all share a stylish family bathroom. The enclosed rear garden is designed for low maintenance, featuring a combination of patio and astro turf, and includes a versatile garden office outbuilding—perfect for remote working or hobbies. A neat front garden adds to the property's kerb appeal.

Situated in a prime location, the home is within easy reach of local shops, highly regarded schools, and excellent transport links. Cardiff Road provides quick access to Newport city centre, the M4 motorway, and regular bus routes, making commuting to Cardiff and surrounding areas effortless. Nearby amenities include supermarkets, cafes, and leisure facilities, ensuring everything you need is close at hand.





Accommodation

Living Room

15' 10" x 12' (4.83m x 3.66m)

Reception Room

12' 11" x 12' (3.94m x 3.66m)

Max Measurements

Kitchen

11' 8" x 7' 4" (3.56m x 2.24m)

Garden Office

12' 3" x 7' 3" (3.73m x 2.21m)

Bedroom 1

12' 11" x 12' 2" (3.94m x 3.71m)

Max Measurements

En-Suite 1

3' 1" x 7' 11" (0.94m x 2.41m)

Bedroom 2

12' 11" x 12' 1" (3.94m x 3.68m)

Max Measurements

En-Suite 2

2' 11" x 7' 11" (0.89m x 2.41m)

Bedroom 3

8' 11" x 7' 5" (2.72m x 2.26m)

Max measurements

Bathroom

8' 3" x 7' 5" (2.51m x 2.26m)

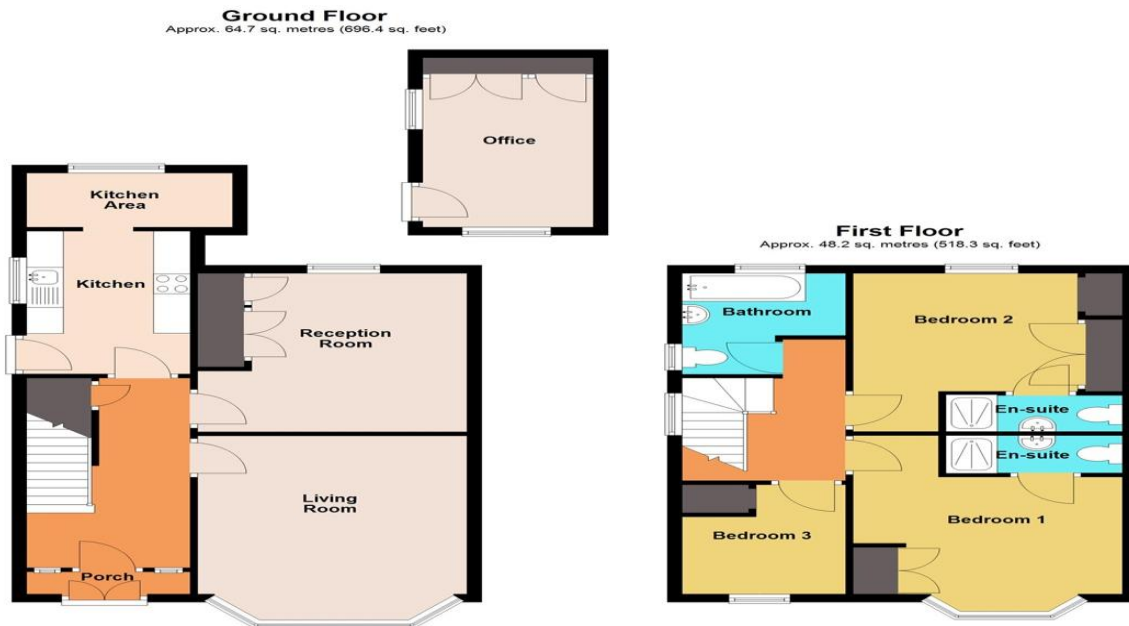
Max Measurements

01633 746088

team@pinkmove.co.uk

Pinkmove

Floorplan



Total area: approx. 112.8 sq. metres (1214.7 sq. feet)
270 Cardiff Road

Important Information

Note while we endeavour to make our sales details accurate and reliable, if there is any point which is of particular interest to you, please contact the office and we will be pleased to confirm the position for you. We have not personally tested any apparatus, equipment, fixtures, fittings or services and cannot verify they are in working order or fit for their purposes. Nothing in these particulars is intended to indicate that carpets or curtains, furnishings or fittings, electrical goods (whether wired or not). Gas fires or light fittings or any other fixtures not expressly included form part of the property offered for sale. This computer generated Floorplan, if applicable, is intended as a general guide to the layout and design of the property. It is not to scale and should not be relied upon for dimensions. Tenure: We cannot confirm the tenure of the property as we have not had access to the legal documents. The buyer is advised to obtain verification from their solicitor or surveyor.

Peter Alan Limited is registered in England and Wales under company number 2073153, Registered Office is Cumbria House, 16-20 Hockliffe Street, Leighton Buzzard, Bedfordshire, LU7 1GN. VAT Registration Number is 500 2481 05. For activities relating to regulated mortgages and non-investment insurance contracts, Peter Alan Limited is an appointed representative of Connells Limited which is authorised and regulated by the Financial Conduct Authority. Connells Limited's Financial Services Register number is 302221. Most buy-to-let

