



Dartmouth Road
NW2

FOR SALE
FREEHOLD

£3,000,000

For Sale exclusively via
Camerons Stiff & Co.

A substantial and imposing
detached Edwardian villa,
situated in a commanding
position on one of the
Mapesbury Conservation
Area's most coveted roads.

This house offers a rare
opportunity to acquire an
exquisite family home in a
truly enviable location.







The house is uniquely characterful, boasting a red-brick architectural typology and a distinctly storied facade. As such, it exudes kerb appeal in abundance. Set back from Dartmouth Road behind a 25ft driveway, the frontage comprises dense foliage and stone paving.

Upon entry, it becomes immediately apparent that the current owners have curated the property in a way that's deeply sympathetic to its original character. The house retains a number of gorgeous original Edwardian architectural features throughout, including ornate geometric ceiling decoration, corncicing, picture rails and centrepiece fireplaces. The interior design scheme is built around these features, resulting in a tactile and beautiful space.



The arrangement of the Ground Floor is largely reminiscent of the property's original layout. The second reception room is stunning, comprising a working cast iron fireplace and set of French doors that lead out to a secluded patio area.

The front reception room is equally elegant, boasting large bay windows and sophisticated joinery. The rear comprises a contemporary high-specification kitchen and leads out to a landscaped 106ft garden.

The upper floors comprise five bedrooms and two bedrooms. The principal suite is situated at the front of the house and boasts an ensuite bathroom with double vanities.







The remaining four bedrooms are serviced by a sizeable family bathroom in the midriff. The Second Floor comprises a large sixth bedroom / loft studio. There's also a second study on this floor, as well as a further bathroom.

Early viewing is recommended. This listing is special and not to be missed.



- Detached Edwardian family home located in the Mapesbury Conservation Area
- 6 bedrooms, 3 bathrooms and 2 reception rooms
- Boasting a red brick architectural typology and a 25ft paved driveway
- Original Edwardian architectural features throughout
- Large bay windows and sophisticated joinery
- Contemporary kitchen/dining room with French doors leading to patio
- 106ft landscaped rear garden
- Excellent transport links
- Early viewing is recommended.
- COUNCIL: Brent (G)







DARTMOUTH ROAD

London - NW 2



Approximate Gross Internal Floor Area

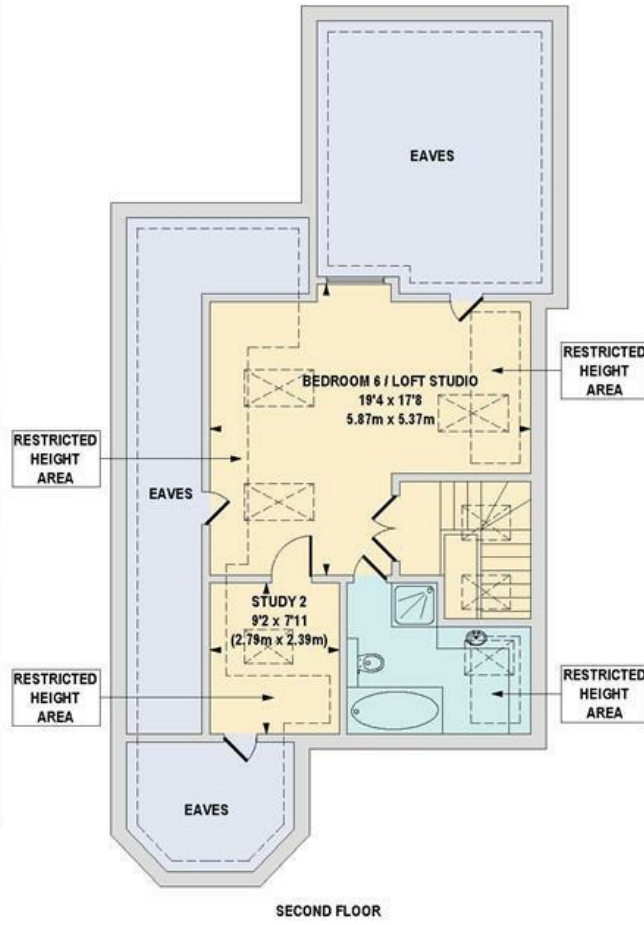
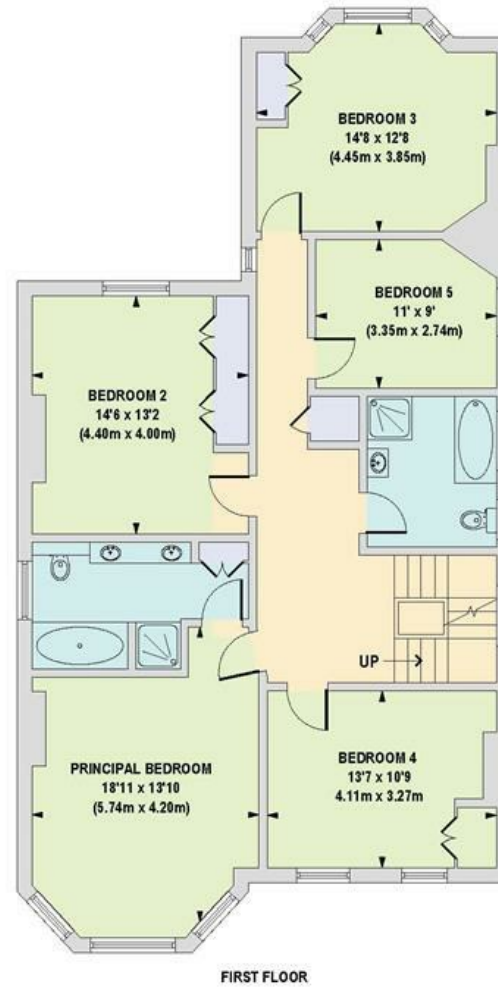
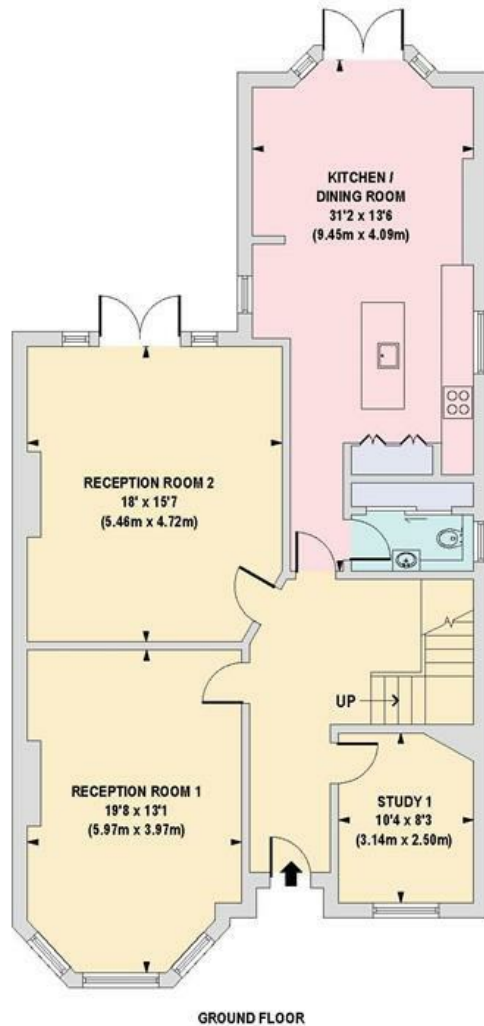
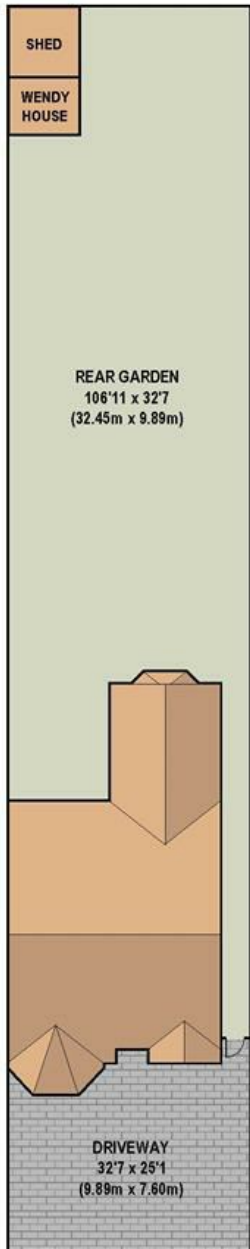
3439 sq. ft / 319.52 sq. m (Including Restricted Height Area & Eaves)
 2785 sq. ft / 258.74 sq. m (Excluding Restricted Height Area & Eaves)

Approx 3439.00 sq ft

EPC: G

Brent (G)

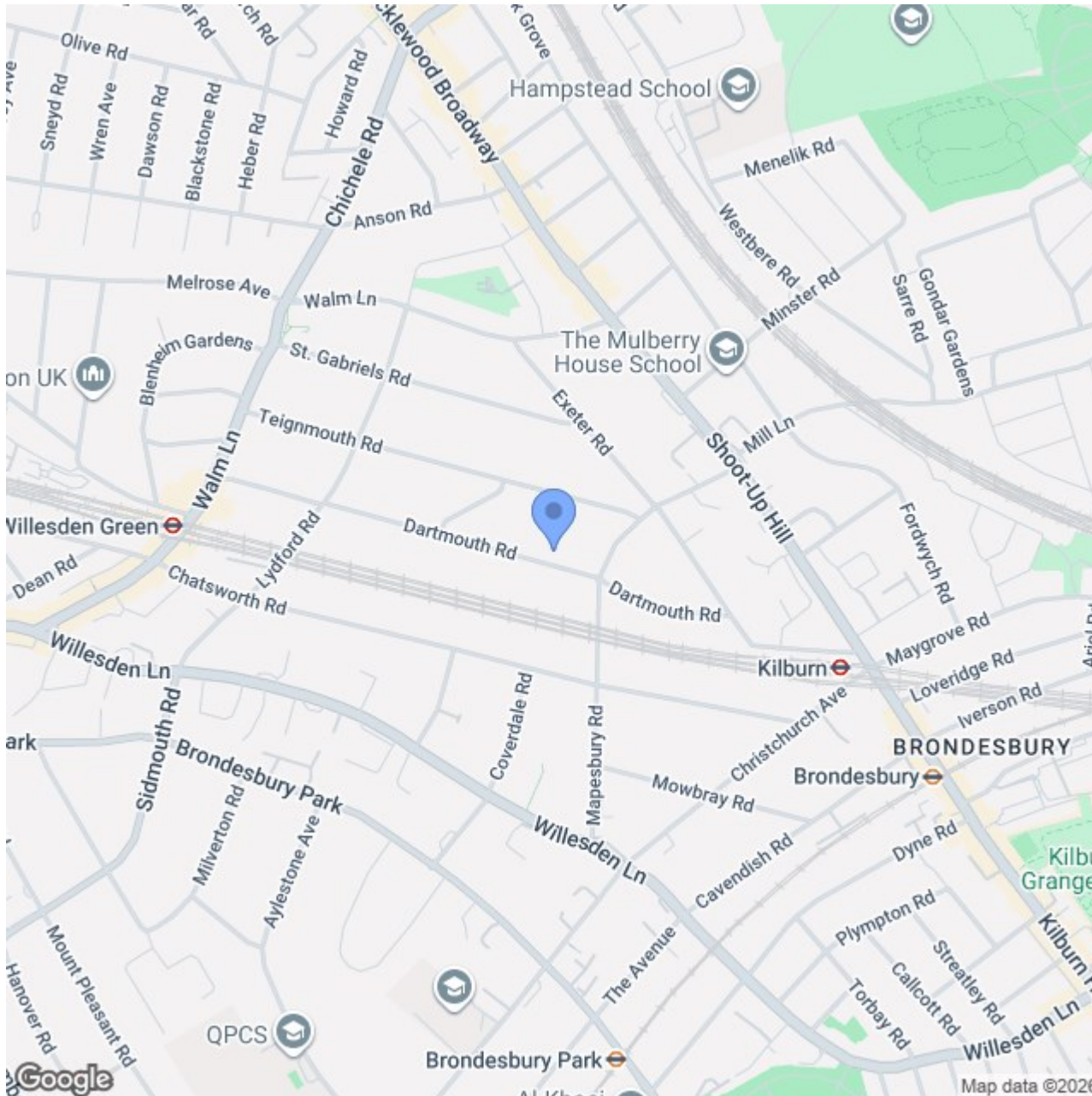
Ref: 19682257



Floorplan is for illustrative purposes only and is not to scale. Every attempt has been made to ensure the accuracy of the floor plan shown, however all measurements, fixtures, fittings and data shown are an approximate interpretation for illustrative purposes only. Liability for errors, omissions or mis-statement through negligence or otherwise is hereby excluded.

Location

The Mapesbury Conservation Area (MCA) is a coveted collection of wide tree-lined roads. Primarily comprising substantial Edwardian villas and Arts & Crafts properties, the desirable enclave is extremely popular with families seeking gorgeous architecture, lateral living and expansive 100ft+ gardens. The MCA is a short distance from a plethora of cafes, restaurants, bars and schools in Queen's Park, West Hampstead, Hampstead and Kilburn. Willesden Green also provides a number of amenities. Local transport links include Willesden Green (Jubilee, Zone 2), Kilburn (Jubilee, Zone 2) and Brondesbury (Mildmay, Zone 2).



020 7328 2828 * 020 8459 1133 – Sales

020 8450 9377 – Lettings

enquiries@cameronsstiff.co.uk

cameronsstiff.co.uk

CAMERONS STIFF & Co.
EST. 1982



These particulars are a guide, not an offer contract. Property descriptions, photographs and floor plans are not taken as statements or representations of fact. Although every effort has been taken to ensure measurements, provided are as accurate as possible, they are to be assumed approximate and not to scale. Prospective purchasers must verify the accuracy of the information provided here through private means. Camerons Stiff & Co. does not give any representations or warranties, nor does Camerons Stiff & Co. represent the vendor legally. Camerons Stiff & Co. assume no liability, for any costs, losses or expenses incurred by the vendor or a prospective purchaser relating to any transaction regarding this property.

©Camerons Stiff & Co. 2025 All rights reserved.

