

SNELLERS

ESTATE AGENTS



Ormond Drive, TW12

£1,325,000

Offered to the market with no onward chain is this fantastic opportunity to purchase a four bedroom semi detached family home with potential to extend (STPP), off-street parking and a large private garden.



Arranged over three floors the accommodation offers an internal porch, an entrance hallway, a downstairs shower room, a bay fronted reception room, a good-sized kitchen/dining room, a second reception room with traditional oak wooden panelling leading onto a conservatory with a door to a large West-facing garden.

On the first floor there is the principle bedroom, a modern four-piece family bathroom and two generous double bedrooms. Into the loft can be found a further bedroom and plenty of eaves storage space.

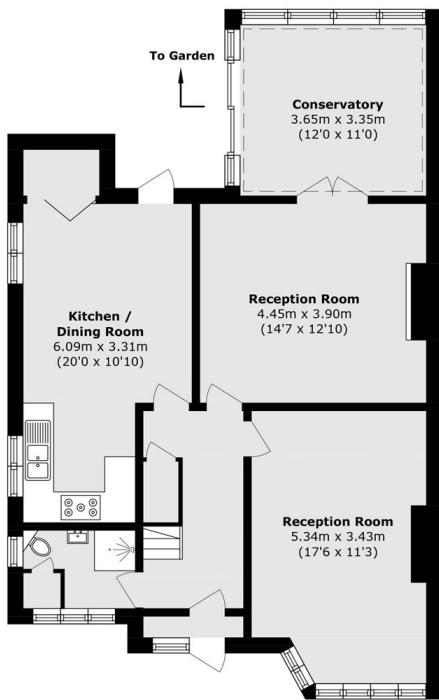
Situated within the popular 'Ormonds' area of Hampton, Ormond Drive is ideally situated for Bushy Park and is located equidistant between the amenities and services of Hampton Hill and Hampton including the train station and a fantastic choice of state and private schools.

- Semi Detached • Four Bedrooms • Scope to Extend (STPP) •
- Off-Street Parking • West-Facing Garden • No Chain •

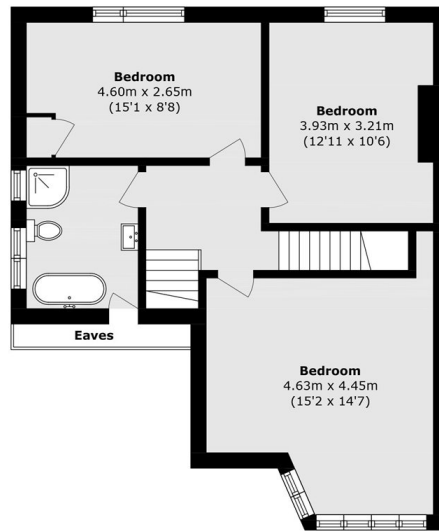


SNELLERS

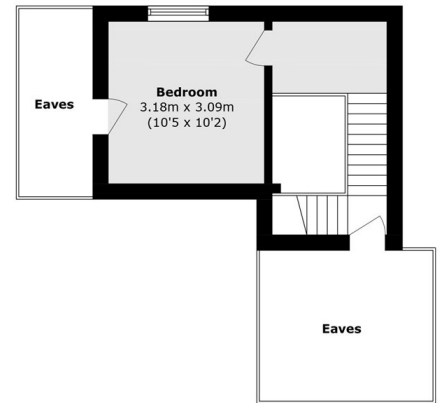
ESTATE AGENTS



Ground Floor



First Floor



Second Floor

Total area (approx.): 162.2 sq. m (1745.9 sq. ft)
(Excluding Eaves)

Snellers Hampton Hill Sales
197-201 High Street
Hampton Hill
TW12 1NL
020 8783 0083
hamptonsales@snellers.co.uk

Energy Rating: D We aim to make our particulars both accurate and reliable. However they are not guaranteed; nor do they form part of an offer or contract. If you require clarification on any points then please contact us, especially if you're traveling some distance to view. Please note that appliances and heating systems have not been tested and therefore no warranties can be given as to their good working order