



Prebend Gardens, W6

£600,000

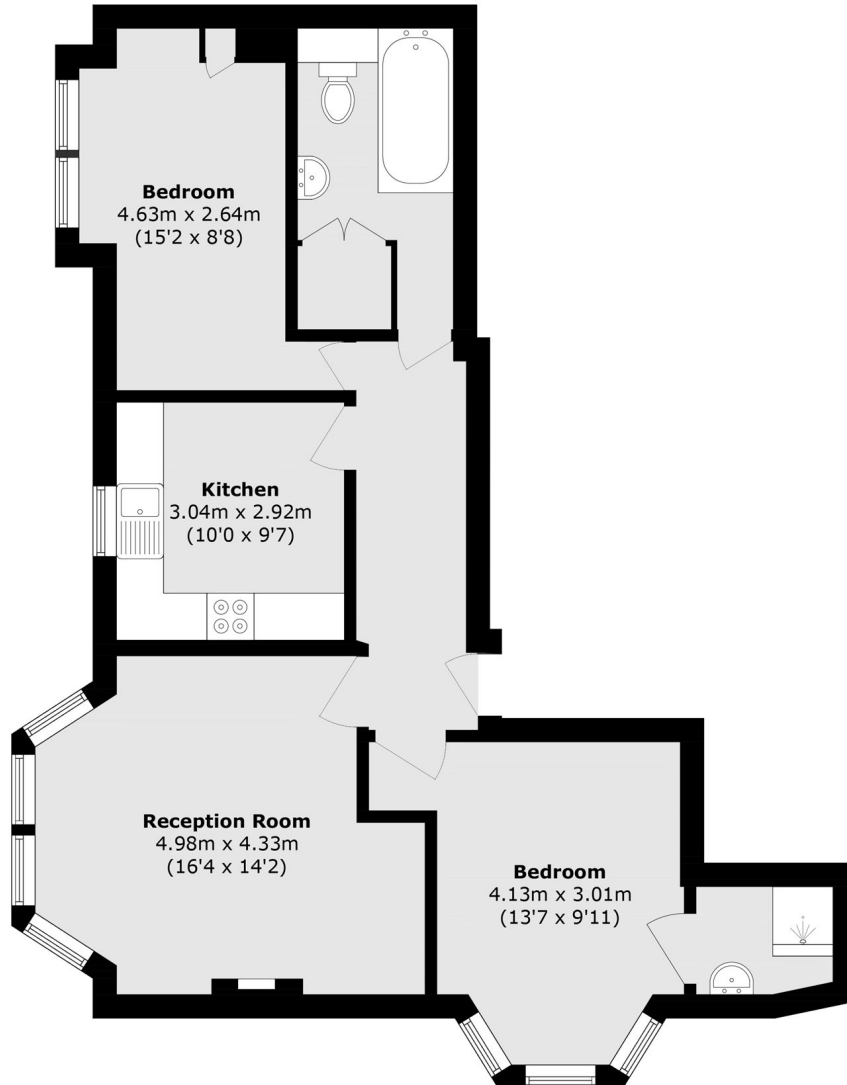
A bright and spacious two bedroom apartment on the first floor of a large converted corner plot house. The property benefits from equal double bedrooms at either end of the property, a family bathroom and an en suite shower room. An eat-in kitchen is separate to the reception room, which gets plenty of light from a large bay window.

Prebend Gardens is a popular, residential street with Chiswick High Road just a short walk (0.2 miles) away. Stamford Brook Station is served by the District Line and the entrance is within 100 meters of the front door. You also have popular green spaces nearby including Stamford Brook Common and Ravenscourt Park.

- Two Bedrooms • Family Bathroom • En Suite Shower Room • Bay Windows • Close Proximity to Tube • No Onward Chain •

FLETCHERS

ESTATE AGENTS



Total area (approx.): 71.6 sq. m (770.7 sq. ft)

Fletchers Chiswick Turnham Green Sales
58 Turnham Green Terrace, London, W4 1QP
020 8987 3000
chiswicksales@fletcherestates.com

Energy Rating: D. We aim to make our particulars both accurate and reliable. However they are not guaranteed; nor do they form part of an offer or contract. If you require clarification on any points then please contact us, especially if you're traveling some distance to view. Please note that appliances and heating systems have not been tested and therefore no warranties can be given as to their good working order.