



Goodrington Place, Broughton, Milton Keynes, MK10 9NT

welcome to

Goodrington Place, Broughton, Milton Keynes

Situated within the popular and well-established area of BROUGHTON, this well-presented FOUR-BEDROOM, DETACHED family home offers generous and versatile accommodation, ideal for modern family living.

Entrance Hall

Double-glazed door to the front, stairs to the first floor, under stairs storage and radiator. Doors to the cloakroom and the kitchen/diner.

Cloakroom

Partially tiled with a wash hand basin and a low-level WC. Heated towel rail and double-glazed obscured window to the side.

Kitchen/Diner

Fitted with a mix of wall and base units with work surface over, stainless steel sink with mixer tap and drainer, cooker hood and space for a cooker. Space for a dishwasher and fridge/freezer. Double-glazed window to the rear. Breakfast bar, space for a dining table and chairs, vertical radiator, tiled flooring and double-glazed Patio doors leading out to the covered decked area. Leads into the lounge.

Lounge

TV point, carpet, radiator and double-glazed window to the front.

Family Room

Double-glazed door to the front, air-conditioning unit and 2 velux style windows. Double-glazed bi-fold doors leading out to the covered patio area.

Garage

Accessed via the family room with a double-glazed window to the side with a store at the front.

First Floor Landing

Stairs from the ground floor, airing cupboard housing the central heating boiler, radiator and loft access. Doors to all bedrooms and the family bathroom.

Bedroom One

Built-in wardrobe with hanging space and storage, air-conditioning unit, radiator and double-glazed window to the front. Door to the en-suite.

En-Suite

Tiled with a wash hand basin, low-level WC and a shower cubicle. Wall mounted mirror with speaker, heated towel rail and extractor fan. Double-glazed obscured window to the side.

Bedroom Two

Built-in wardrobe with hanging space and storage, laminate flooring, radiator and double-glazed windows to the front and rear. Double-glazed double doors to the side with a Juliet balcony.

Bedroom Three

Laminate flooring, radiator and double-glazed window to the rear.

Bedroom Four

Carpet, radiator and double-glazed window to the rear.

Bathroom

Fully tiled with a pedestal wash hand basin with mixer tap, low-level WC with integral flush, bath with mixer tap and handheld shower and a shower cubicle with a rainfall shower. Built-in TV and speakers in the ceiling. Under floor heating and a heated towel rail. Double-glazed obscured windows to the front and side.





Outside Store

Store with up & over door, power and light.

Front Garden

Paved drive providing off-road parking with 7kw car charger. Artificial lawn area with mature shrub border to the front and a path leading to the front door.

Rear Garden

Enclosed garden with is laid with artificial lawn, flower and shrub borders, and a large covered decked area. Shed and gated side access.



view this property online [brownmerry.co.uk/Property/NPL108191](https://www.brownmerry.co.uk/Property/NPL108191)



welcome to

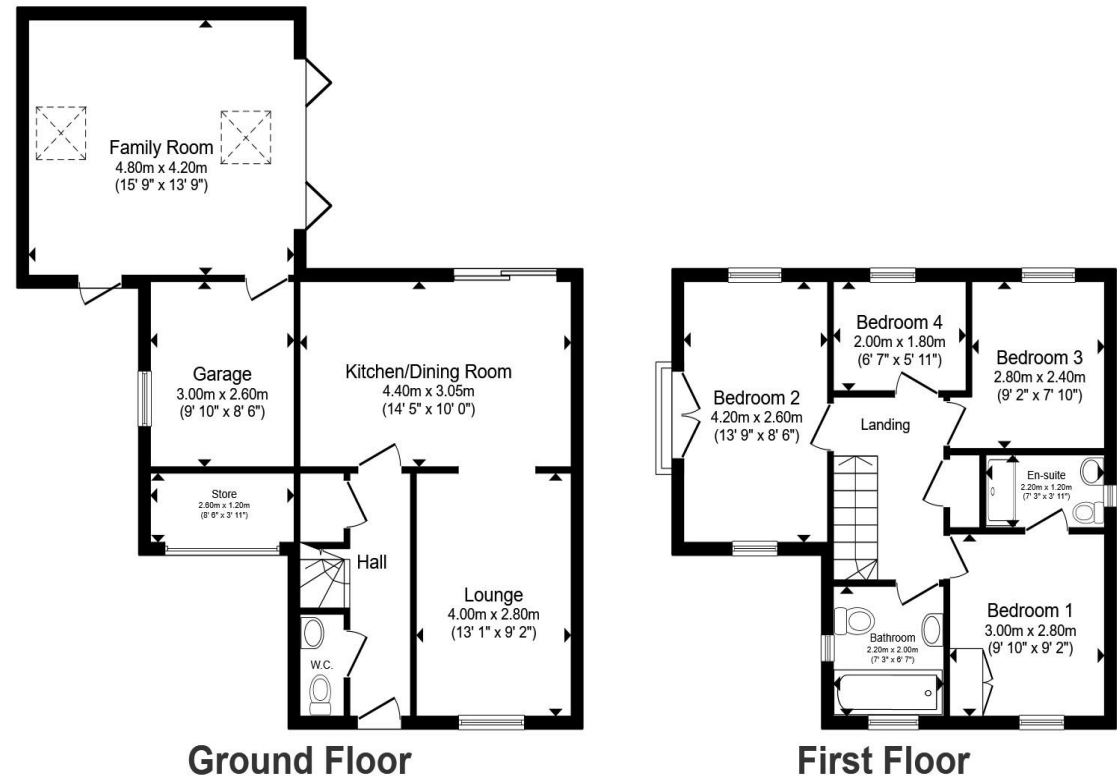
Goodrington Place, Broughton, Milton Keynes

- FOUR-BEDROOM DETACHED
- SPACIOUS LOUNGE & SEPARATE DINING ROOM
- EN-SUITE TO PRINCIPAL BEDROOM
- BATHROOM & CLOAKROOM
- PRIVATE REAR GARDEN

Tenure: Freehold EPC Rating: C

Council Tax Band: E

£550,000



Total floor area 113.7 m² (1,224 sq.ft.) approx

This floor plan is for illustrative purposes only. It is not drawn to scale. Any measurements, floor areas (including any total floor area), openings and orientation are approximate. No details are guaranteed, they cannot be relied upon for any purpose and they do not form part of any agreement. No liability is taken for any error, omission or misstatement. A party must rely upon its own inspection(s). Powered by www.propertybox.io



view this property online brownandmerry.co.uk/Property/NPL108191



Property Ref:
NPL108191 - 0005

1. MONEY LAUNDERING REGULATIONS Intending purchasers will be asked to produce identification documentation at a later stage and we would ask for your co-operation in order that there is no delay in agreeing the sale. 2. These particulars do not constitute part or all of an offer or contract. 3. The measurements indicated are supplied for guidance only and as such must be considered incorrect. Potential buyers are advised to recheck measurements before committing to any expense. 4. We have not tested any apparatus, equipment, fixtures or services and it is in the buyers interest to check the working condition of any appliances. 5. Where an EPC, or a Home Report (Scotland only) is held for this property, it is available for inspection at the branch by appointment. If you require a printed version of a Home Report, you will need to pay a reasonable production charge reflecting printing and other costs. 6. We are not able to offer an opinion either written or verbal on the content of these reports and this must be obtained from your legal representative. 7. Whilst we take care in preparing these reports, a buyer should ensure that his/her legal representative confirms as soon as possible all matters relating to title including the extent and boundaries of the property and other important matters before exchange of contracts.

Brown & Merry is a trading name of Sequence (UK) Limited which is registered in England and Wales under company number 4268443, Registered Office is Cumbria House, 16-20 Hockliffe Street, Leighton Buzzard, Bedfordshire, LU7 1GN. VAT Registration Number is 500 2481 05.



01908 611242



newportpagnell@brownandmerry.co.uk



74A High Street, Newport Pagnell, MILTON
KEYNES, Buckinghamshire, MK16 8AQ



brownandmerry.co.uk