



GREEN STREET OXFORD OX4
£1,900 PER MONTH AVAILABLE 31/08/2026

Hamptons

THE HOME EXPERTS

{ THE PARTICULARS

Green Street Oxford OX4

£1,900 Per Month
Unfurnished

 2 Bedrooms
 1 Bathroom
 1 Reception

Features

- Two spacious double bedrooms, -
Semi-detached home, - Private patio
garden, - Open-plan kitchen/living area, -
Private garage, - Ideally located in the
heart of East Oxford

Council Tax

Council Tax Band C

Hamptons
257 Banbury Road
Summertown, Oxford, OX2 7HN
01865 578 501
oxfordlettings@hamptons.co.uk
www.hamptons.co.uk

{ A TWO DOUBLE BEDROOM HOUSE WITH PRIVATE GARDEN

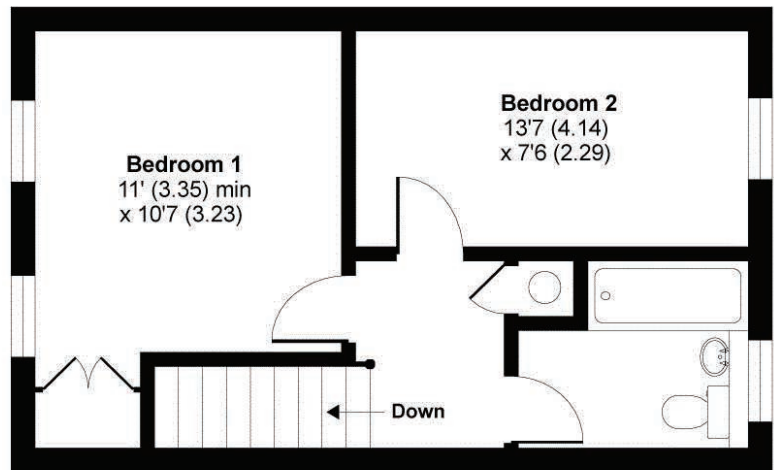
The Property

A well-presented two double bedroom semi-detached home with a private patio garden and garage, ideally located within easy reach of Oxford city centre. The property offers a bright and spacious open-plan kitchen/living area with double doors opening onto the private patio garden, providing an excellent space for relaxing or entertaining. Upstairs are two well-proportioned double bedrooms and a contemporary family bathroom. Further benefits include a private garage and a convenient location close to Oxford city centre, local amenities, excellent transport links, and nearby business and science parks. Ideal for professional couples, small families, or sharers seeking comfortable accommodation in a well-connected location.

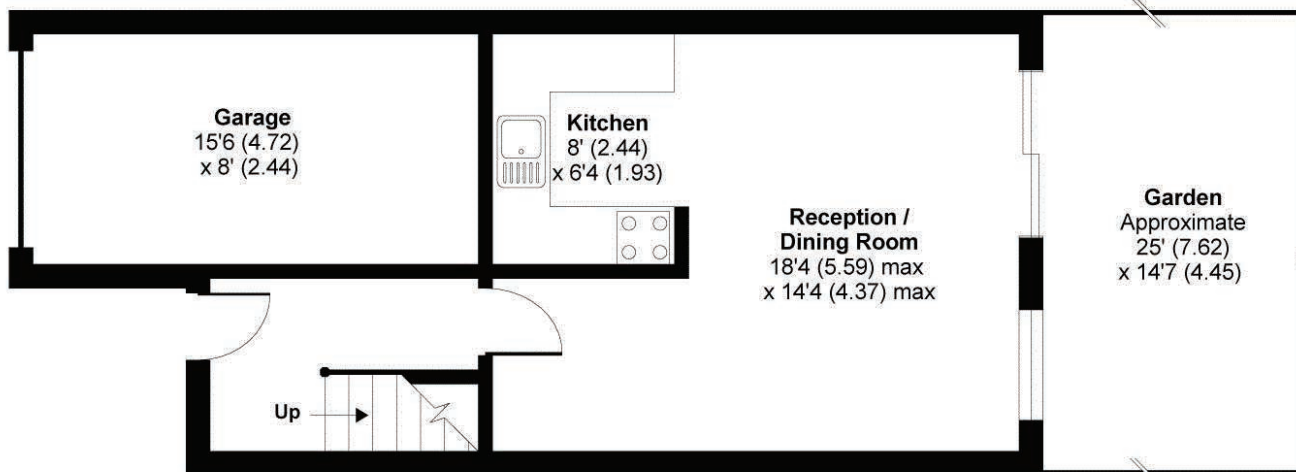
Outside

Ideally situated in the heart of East Oxford, this property is within walking distance of a fantastic selection of cafés, restaurants, shops and local amenities. Oxford city centre, the universities, hospitals and business parks are all easily accessible, while excellent transport links provide convenient access to the A34, M40 and Oxford's rail stations, offering regular services to London. A superb location for professionals, commuters and those looking to enjoy everything Oxford has to offer.





FIRST FLOOR



GROUND FLOOR

Green Street, Oxford, OX4

APPROX. GROSS INTERNAL FLOOR AREA 684 SQ FT 63.5 SQ METRES (INCLUDES GARAGE)

Whilst every attempt has been made to ensure the accuracy of the floor plan contained here, measurements of doors, windows and rooms are approximate and no responsibility is taken for any error, omission or misstatement. These plans are for representation purposes only as defined by RICS Code of Measuring Practice and should be used as such by any prospective purchaser. Specifically no guarantee is given on the total square footage of the property if quoted on this plan. Any figure given is for initial guidance only and should not be relied on as a basis of valuation.

Copyright nichecom.co.uk 2016 Produced for Hamptons International REF : 123006

For Clarification

We wish to inform prospective tenants that we have prepared these particulars as a general guide and they have been confirmed as accurate by the landlord. We have not verified permissions, nor carried out a survey, tested the services, appliances and specific fittings. Room sizes are approximate and measurement figures rounded: they are taken between internal wall surfaces and therefore include cupboards/shelves, etc. Accordingly, they should not be relied upon for

carpets and furnishings. It should also be noted that all fixtures and fittings, carpeted, curtains/blinds, kitchen equipment and garden statuary, whether fitted or not, are deemed removable by the landlord unless specifically itemised with these particulars. Please enquire in office or on our website for details on holding deposit and tenancy deposit figures.

