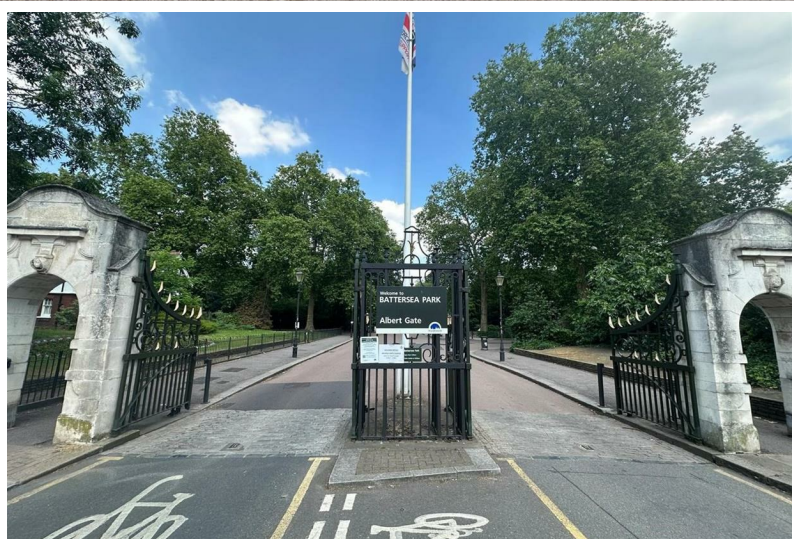


St Mary Le Park Court | , SW11



£2,250 PCM

- Two Double Bedroom Flat • Directly Opposite Battersea Park • Walking Distance to Chelsea • Modern Fitted Kitchen • Bathroom With Shower • Double Bedrooms With Fitted Wardrobes • Communal Roof Terrace • New carpets • Good Natural Light • 15 minute Walking Distance to Battersea Power Station

St Mary Le Park Court | , SW11

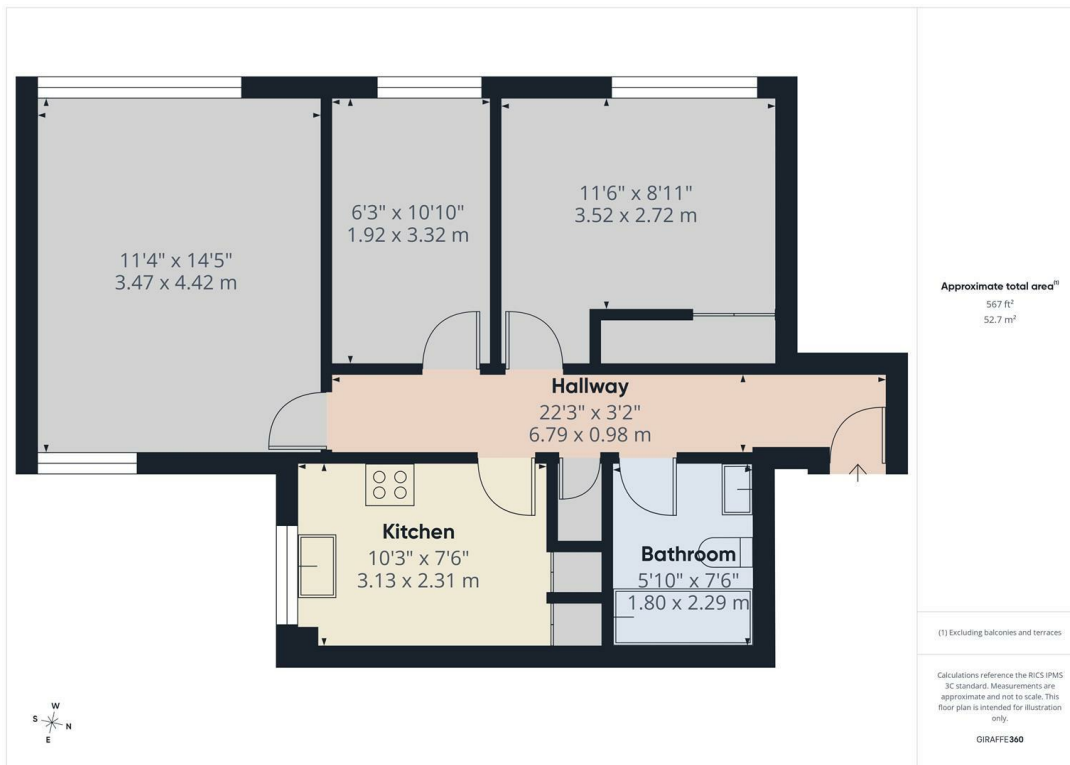


Bright and Spacious well presented 2 double bedroom apartment in smart purpose built block located directly opposite the wide open spaces of Battersea Park and just 2 minutes walk from Albert Bridge which takes you across to Chelsea Embankment and the Kings Road.

The accommodation comprises good size reception room, fitted kitchen, 2 double bedrooms and bathroom with over bath shower. Access to communal roof terrace. Newly painted and carpeted throughout.

The property benefits from a host of transport links including Battersea Park and Queenstown Road Stations (5 minutes to Victoria and 11 minutes to Waterloo), as well as the new Northern Line Tube extension at Battersea Power Station all being a pleasant walk away across the park. Also good bus routes into the City and West End.

Wandsworth Council Tax Band E. Available immediately, unfurnished.



Energy Efficiency Rating		Current	Potential
Very energy efficient - lower running costs			
(92 plus) A			
(81-91) B			
(69-80) C		77	81
(55-68) D			
(39-54) E			
(21-38) F			
(1-20) G			
Not energy efficient - higher running costs			
England & Wales		EU Directive 2002/91/EC	
Environmental Impact (CO ₂) Rating		Current	Potential
Very environmentally friendly - lower CO ₂ emissions			
(92 plus) A			
(81-91) B			
(69-80) C		75	76
(55-68) D			
(39-54) E			
(21-38) F			
(1-20) G			
Not environmentally friendly - higher CO ₂ emissions			
England & Wales		EU Directive 2002/91/EC	

These particulars are designed to provide a guideline only and cannot be relied upon as a statement of fact. The description represents the opinion of the author and is not intended to provide false or misleading information. Any prospective purchaser should make further checks on its accuracy. All measurements are approximate and floorplans are for representation only.



Eden Harper
 64 Battersea Park Road, London, SW11 4JP
0207 720 1116
 info@edenharper.com
 www.edenharper.com