



Cheviot Drive, Chelmsford CM1 2EX

welcome to

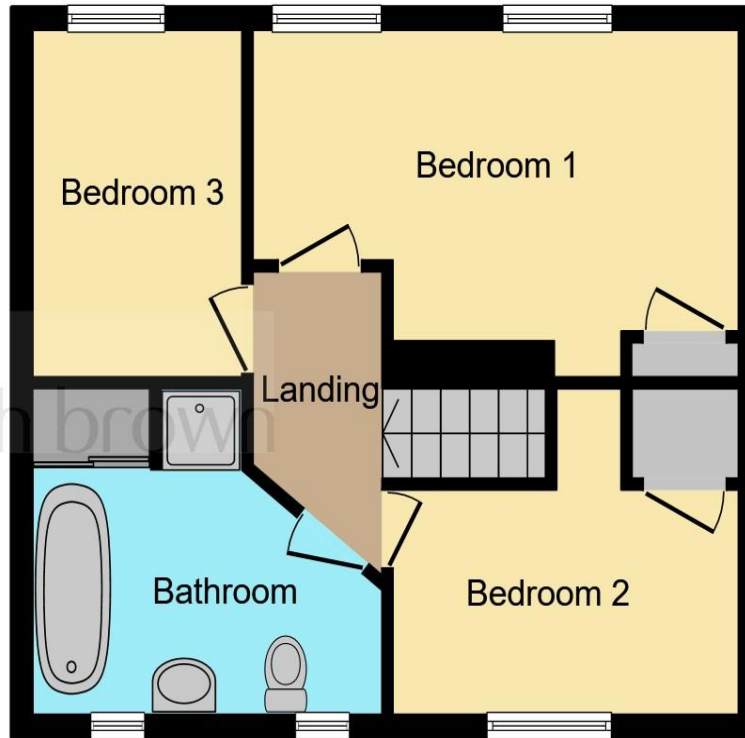
Cheviot Drive, Chelmsford

This beautifully presented three-bedroom home offers the perfect blend of comfort and convenience. Set in a peaceful position fronting a large green area and away from the road, it's an ideal choice for families seeking space and tranquility.





Ground Floor



First Floor

Ground Floor

Entrance Hall

Kitchen

16' 2" x 6' 8" (4.93m x 2.03m)

Lounge

19' 10" x 12' 2" narrowing to 9' (6.05m x 3.71m narrowing to 2.74m)

First Floor

Bedroom One

14' 9" max x 9' 1" max (4.50m max x 2.77m max)

Bedroom Two

10' 7" x 6' 8" max (3.23m x 2.03m max)

Bedroom Three

10' 8" x 6' 6" (3.25m x 1.98m)

Bath & Shower Room

External

Front & Rear Garden

Parking On Street

This floor plan is for illustrative purposes only. It is not drawn to scale. Any measurements, floor areas (including any total floor area), openings and orientation are approximate. No details are guaranteed, they cannot be relied upon for any purpose and they do not form part of any agreement. No liability is taken for any error, omission or misstatement. A party must rely upon its own inspection(s). Powered by www.focalagent.com

welcome to

Cheviot Drive, Chelmsford

- Terrace family home
- Three bedrooms
- Westerly-facing rear garden approx. 50ft
- Short walk to local shops and Morrisons supermarket
- Easy access to Chelmsford City Centre & mainline station

Tenure: Freehold EPC Rating: D
Council Tax Band: C

guide price

£300,000



Please note the marker reflects the postcode not the actual property

view this property online williamhbrown.co.uk/Property/CHE115767



Property Ref:
CHE115767 - 0005

1. MONEY LAUNDERING REGULATIONS Intending purchasers will be asked to produce identification documentation at a later stage and we would ask for your co-operation in order that there is no delay in agreeing the sale. 2. These particulars do not constitute part or all of an offer or contract. 3. The measurements indicated are supplied for guidance only and as such must be considered incorrect. Potential buyers are advised to recheck measurements before committing to any expense. 4. We have not tested any apparatus, equipment, fixtures or services and it is in the buyers interest to check the working condition of any appliances. 5. Where an EPC, or a Home Report (Scotland only) is held for this property, it is available for inspection at the branch by appointment. If you require a printed version of a Home Report, you will need to pay a reasonable production charge reflecting printing and other costs. 6. We are not able to offer an opinion either written or verbal on the content of these reports and this must be obtained from your legal representative. 7. Whilst we take care in preparing these reports, a buyer should ensure that his/her legal representative confirms as soon as possible all matters relating to title including the extent and boundaries of the property and other important matters before exchange of contracts.

William H Brown is a trading name of Sequence (UK) Limited which is registered in England and Wales under company number 4268443, Registered Office is Cumbria House, 16-20 Hockliffe Street, Leighton Buzzard, Bedfordshire, LU7 1GN. VAT Registration Number is 500 2481 05.



william h brown



01245 262266



Chelmsford@williamhbrown.co.uk



12 Duke Street, CHELMSFORD, Essex, CM1 1HL



williamhbrown.co.uk