



Bennets Lodge, Chase Court Gardens, Enfield, EN2 8DB



welcome to

Bennets Lodge, Chase Court Gardens, Enfield

Barnfields are delighted to offer for sale this superb, second floor (top floor), modern purpose built two bedroom apartment in this most conveniently located development, just a stones throw from local shops on Windmill Hill including Waitrose and Enfield Chase Rail Station (Moorgate Line). Enfield Town shopping centre and country park is also within easy walking distance.

The property benefits from a Share of the Freehold and must be viewed to be fully appreciated!



Communal Hallway

With stairs to top floor landing, flat door opens to:-

Entrance Hall

Laminate flooring, radiator, two built-in storage cupboards, loft hatch opening to loft storage space.

Lounge / Kitchen Area

19' 7" x 16' 2" (5.97m x 4.93m)

Laminate flooring, two radiators, two double glazed sash window to front aspect, open plan to:

Kitchen Area - Range of fitted wall and base units with toning worktops, sink and drainer, tiled splashbacks, built-in oven with gas hob, stainless steel splashback and extractor above, plumbing for washing machine and dishwasher, built-in fridge/freezer, double glazed sash window to side aspect, wall mounted boiler.

Bedroom One

16' 4" x 9' 6" (4.98m x 2.90m)

Fitted carpet, two double glazed sash windows to side aspect, radiator.

Bedroom Two

9' 8" x 9' 7" (2.95m x 2.92m)

Fitted carpet, double glazed sash window to side aspect, radiator.

Bathroom

Panelled bath with shower above and glass screen, pedestal wash hand basin, WC, part tiled walls, tiled floor, radiator.

Outside

Communal Garden

Pleasant and well manicured communal gardens surround the block.

Secure Parking Space

Parking for residents only accessed via an electric gate.



view this property online barnfields.co.uk/Property/ENF105934





welcome to

Bennets Lodge, Chase Court Gardens

- Two Generous Sized Bedrooms
- Open Plan Kitchen / Lounge
- Loft Storage Space
- Secure Parking
- Share Of Freehold

Tenure: Leasehold EPC Rating: C

Council Tax Band: D Service Charge: 2037.60

Ground Rent: Ask Agent

This is a Leasehold property with details as follows; Term of Lease 999 years from 24 Jun 1988. Should you require further information please contact the branch. Please Note additional fees could be incurred for items such as Leasehold packs.

£350,000

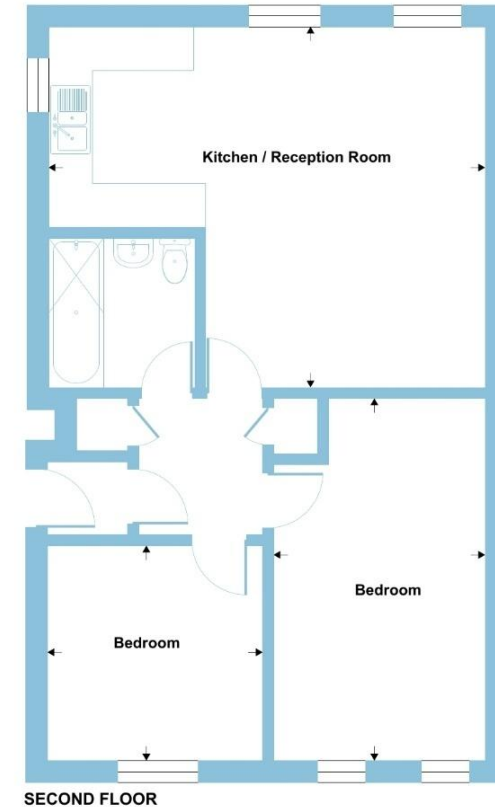


Please note the marker reflects the postcode not the actual property



Chase Court Gardens, Enfield, EN2

Approximate Area = 645 sq ft / 59.9 sq m
For identification only - Not to scale



check out more properties at [barnfields.co.uk](https://www.barnfields.co.uk)



Property Ref:
ENF105934 - 0005

1. MONEY LAUNDERING REGULATIONS Intending purchasers will be asked to produce identification documentation at a later stage and we would ask for your co-operation in order that there is no delay in agreeing the sale. 2. These particulars do not constitute part or all of an offer or contract. 3. The measurements indicated are supplied for guidance only and as such must be considered incorrect. Potential buyers are advised to recheck measurements before committing to any expense. 4. We have not tested any apparatus, equipment, fixtures or services and it is in the buyers interest to check the working condition of any appliances. 5. Where an EPC, or a Home Report (Scotland only) is held for this property, it is available for inspection at the branch by appointment. If you require a printed version of a Home Report, you will need to pay a reasonable production charge reflecting printing and other costs. 6. We are not able to offer an opinion either written or verbal on the content of these reports and this must be obtained from your legal representative. 7. Whilst we take care in preparing these reports, a buyer should ensure that his/her legal representative confirms as soon as possible all matters relating to title including the extent and boundaries of the property and other important matters before exchange of contracts.

Barnfields is a trading name of Sequence (UK) Limited which is registered in England and Wales under company number 4268443, Registered Office is Cumbria House, 16-20 Hockliffe Street, Leighton Buzzard, Bedfordshire, LU7 1GN. VAT Registration Number is 500 2481 05.

Floor plan produced in accordance with RICS Property Measurement 2nd Edition, Incorporating International Property Measurement Standards (IPMS2 Residential). © nchecom 2026. Produced for Barnard Marcus. REF: 1456533



barnfields



020 8363 3394



info@barnfields.com



1a Windmill Hill, Enfield, Middlesex, EN2 6SE



[barnfields.co.uk](https://www.barnfields.co.uk)