



**WARWICK SQUARE**  
PIMLICO

**JACKSON-STOPS** 

## WARWICK SQUARE PIMLICO, SW1V

ASKING PRICE: £2,150,000

A fantastic opportunity to acquire a spacious duplex apartment of approximately 1,770 sq ft, arranged as four or five bedrooms, in the prestigious location of Warwick Square, SW1.

The property is exceptionally quiet and filled with plenty of natural light throughout, offering a highly efficient layout with minimal wasted space. The principal rooms, including the open-plan kitchen/reception room and the principal bedroom suite, are positioned on the preferred garden square' side.

Offered with no onward chain, this versatile home comprises four or five double bedrooms, depending on preference and would suit those seeking a central London residence, a substantial pied-à-terre, or a long-term investment opportunity (as it has been for the current owner). Warwick Square is widely regarded as one of Prime Central London's most sought-after addresses. Residents benefit from private access to the award-winning communal gardens, which include a children's play area, tennis court, and numerous peaceful seating areas.

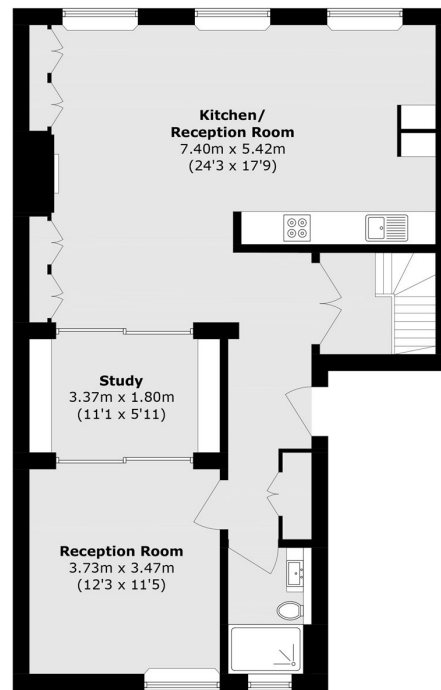
The property is conveniently located for the local shops, bars, and restaurants the area has to offer, as well as being within easy reach of Belgravia (Elizabeth Street) only 0.3 Miles away, Sloane Square and the King's Road only 0.9 Miles. Victoria Station is circa 0.4 Miles, providing excellent transport connections including the Gatwick Express, District and Circle lines, and the Victoria line, offering swift access to the City and Canary Wharf (c.19 minutes).

### KEY FEATURES

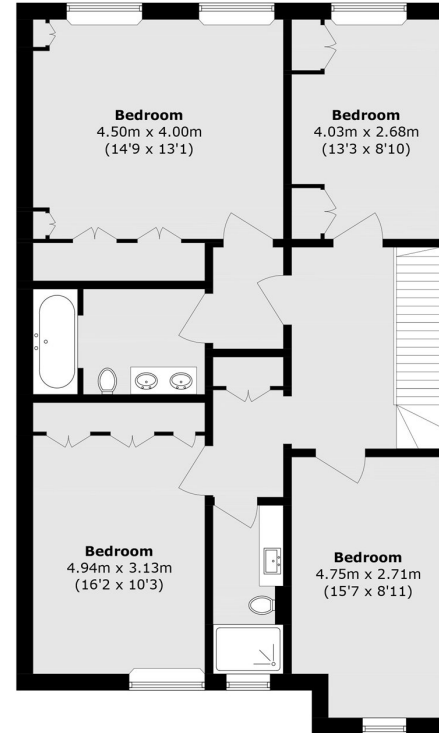
- Share Of Freehold
- No Onward Chain
- Four Bedrooms + Study
- Warwick Square Access
- Service Ch: c. £12,000 pa
- Inc Sinking Fund







**Third Floor**



**Fourth Floor**

Total area (approx.): 164.4 sq. m (1769.6 sq. ft)

Energy Rating: E. We aim to make our particulars both accurate and reliable. However they are not guaranteed; nor do they form part of an offer or contract. If you require clarification on any points then please contact us, especially if you are travelling some distance to view. Please note that appliances and heating systems have not been tested and therefore no warranties can be given as to their good working order.

**ASKING PRICE: £2,150,000**

**PIMLICO**

**020 7828 4050**

pimlicosales@jackson-stops.com

jackson-stops.co.uk

**JACKSON-STOPS** 