



Glanwern Avenue, guide price £270,000- £280,000

- Guide Price £270,000 to £280,000
- No Chain
- Bay Windows
- Ground floor shower room
- Enclosed rear garden
- Four bedrooms
- Garage
- Extended semi-detached property
- EPC Rating: C



 4  2  2

Pinkmove

01633 746088
team@pinkmove.co.uk



About the property

Situated on the popular Glanwern Avenue in Newport, this extended four-bedroom semi-detached property offers spacious and versatile accommodation, making it an ideal family home.

The property is entered via a welcoming hallway which provides access to all ground floor rooms. To the front, there is a bright and generously sized lounge/living room stretching over 26ft in length, benefiting from a bay window that floods the space with natural light and creates a perfect setting for both relaxing and entertaining.

To the rear, the home features a modern fitted kitchen with a range of wall and base units and ample worktop space. From here, there is convenient access to the rear garden. The ground floor is further enhanced by a well-appointed shower room, adding practicality for busy households.

Upstairs, the property offers four well-proportioned bedrooms, including an impressive principal bedroom, providing excellent space and flexibility. The remaining bedrooms are ideal for family, guests, or home working. A family bathroom completes the first-floor accommodation.

Externally, the property benefits from an enclosed rear garden with a mix of lawn and established planting, offering a private outdoor space to enjoy. The property also benefits from a detached garage with rear lane access.





Accommodation

Lounge/Living Room

Kitchen

Shower Room

Bedroom 1

Bedroom 2

Bedroom 3

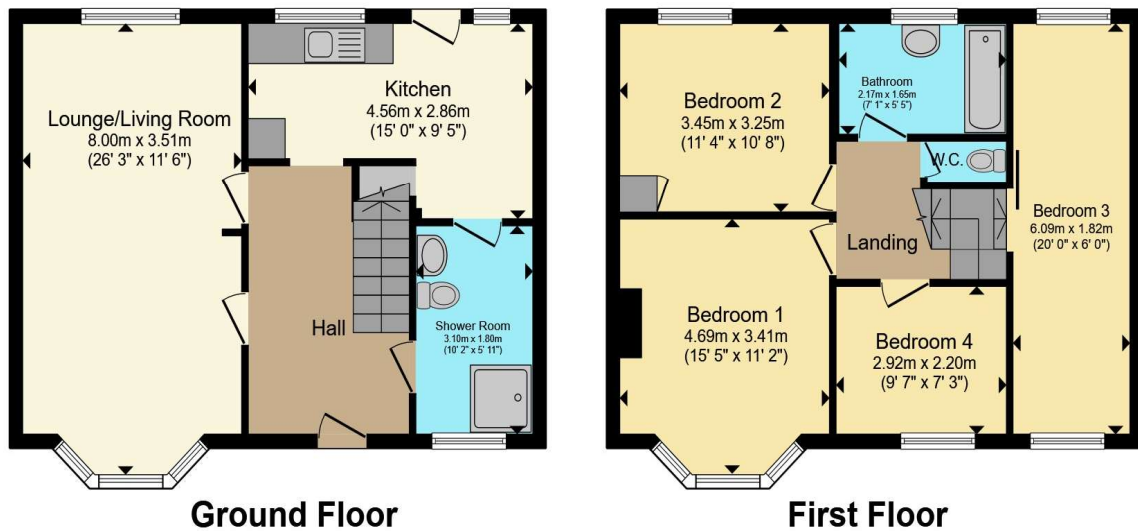
Bedroom 4

Bathroom

Agents Note

The garage is accessed via an unadopted lane. Buyers are advised to make their own enquiries regarding rights of access and maintenance responsibilities

Floorplan



Total floor area 102.1 sq.m. (1,099 sq.ft.) approx

This floor plan is for illustrative purposes only. It is not drawn to scale. Any measurements, floor areas (including any total floor area), openings and orientation are approximate. No details are guaranteed, they cannot be relied upon for any purpose and they do not form part of any agreement. No liability is taken for any error, omission or misstatement. A party must rely upon its own inspection(s). Powered by www.focalagent.com



Important Information

Note while we endeavour to make our sales details accurate and reliable, if there is any point which is of particular interest to you, please contact the office and we will be pleased to confirm the position for you. We have not personally tested any apparatus, equipment, fixtures, fittings or services and cannot verify they are in working order or fit for their purposes. Nothing in these particulars is intended to indicate that carpets or curtains, furnishings or fittings, electrical goods (whether wired or not). Gas fires or light fittings or any other fixtures not expressly included form part of the property offered for sale. This computer generated Floorplan, if applicable, is intended as a general guide to the layout and design of the property. It is not to scale and should not be relied upon for dimensions. Tenure: We cannot confirm the tenure of the property as we have not had access to the legal documents. The buyer is advised to obtain verification from their solicitor or surveyor.

Peter Alan Limited is registered in England and Wales under company number 2073153, Registered Office is Cumbria House, 16-20 Hockliffe Street, Leighton Buzzard, Bedfordshire, LU7 1GN. VAT Registration Number is 500 2481 05. For activities relating to regulated mortgages and non-investment insurance contracts, Peter Alan Limited is an appointed representative of Connells Limited which is authorised and regulated by the Financial Conduct Authority. Connells Limited's Financial Services Register number is 302221. Most buy-to-let

