



## Stevens Close, TW12

£2,400 PCM

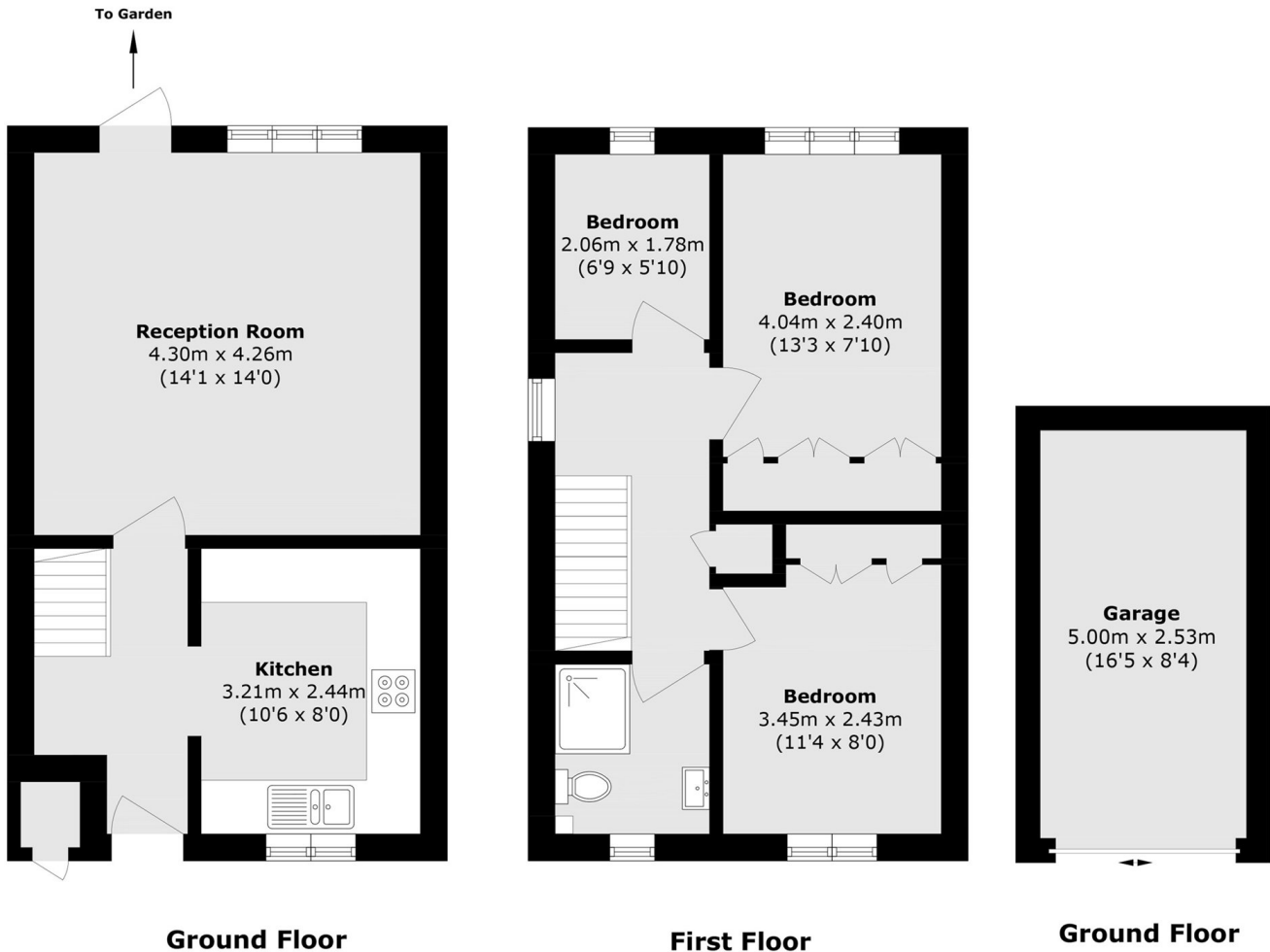
Beautifully presented three bedroom end of terrace house set on this quiet cul-de-sac. The property offers modern kitchen and bathroom, separate lounge leading onto a wrap around garden, garage and on street parking.

Stevens Close forms part of the popular Nurserylands development and is ideally located for a number of schools and the recreational amenities of Hampton Common and Hatherop Park.

- End of Terrace • Three Bedrooms • Wrap-Around Private Garden •
- Generous Plot Size • Garage • Quiet cul-de-sac •

# SNELLERS

ESTATE AGENTS



Total area (approx.): 64.5 sq. m (694.3 sq. ft)  
External Storage area (approx.): 5.1 sq. m (54.9 sq. ft)  
Garage area (approx.): 12.6 sq. m (135.6 sq. ft)

Snellers Hampton Hill Lettings  
197-201 High Street  
Hampton Hill  
TW12 1NL  
020 8783 3633  
hamptonlettings@snellers.co.uk

Energy Rating: C We aim to make our particulars both accurate and reliable. However they are not guaranteed; nor do they form part of an offer or contract. If you require clarification on any points then please contact us, especially if you're traveling some distance to view. Please note that appliances and heating systems have not been tested and therefore no warranties can be given as to their good working order