



Westland Road, Yeovil, BA20 2AY

welcome to

Westland Road, Yeovil

A recently refurbished two bedroom terrace home, offered for sale with no onward chain, situated in a popular residential location and close to many local amenities. The accommodation is presented in excellent decorative order boasting a wealth of space and natural light throughout.



Entrance

Double glazed door to the front, opening into:

Entrance Hall

Stairs rising to the first floor. Door opening into:

Lounge

13' 1" x 13' (3.99m x 3.96m)

A lovely light room with double glazed window to the front. Large understairs storage cupboard with plumbing for washing machine. Radiator. Door opening into:

Fitted Kitchen

16' 2" x 6' 2" (4.93m x 1.88m)

Two double glazed windows to the rear, overlooking the garden. A range of recently fitted kitchen units, including taller wall units, and wide base and drawer units, with sleek modern compact laminate work surface and complementary tiled surround. Inset stainless steel sink with mixer tap. Integrated induction hob with cooker hood over and electric oven below. Plumbing for dishwasher. Built in eye level microwave. Space for fridge/freezer. Radiator. Double glazed door to the rear, opening to the garden.

First Floor Landing

Access to the loft space.

Bedroom One

13' 9" x 11' (4.19m x 3.35m)

Double glazed window to the front. Built in wardrobe. Space for free standing furniture. Radiator.

Bedroom Two

10' 2" x 8' 3" (3.10m x 2.51m)

Double glazed window to the rear, overlooking the garden. Space for free standing furniture. Radiator.

Shower Room

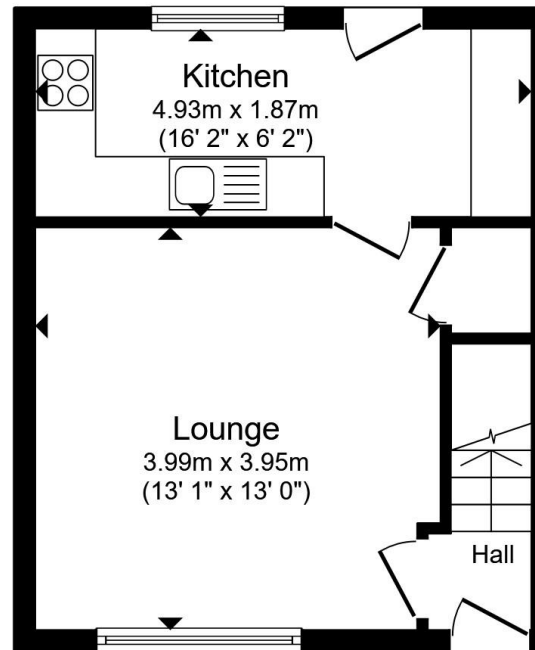
Double glazed window to the rear. A recently fitted suite comprising enclosed double walk in shower cubicle, wash hand basin and WC inset to vanity unit with storage below. Fully tiled. Chrome towel radiator.

Front Garden

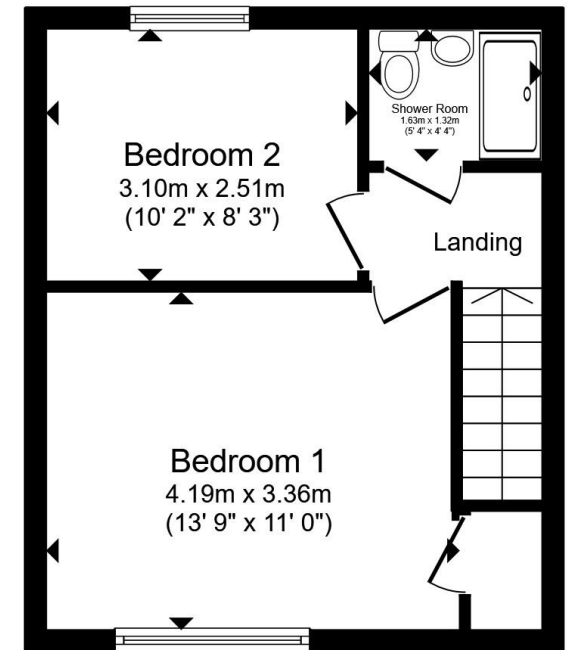
A recently laid block paved driveway providing off road parking for two cars.

Rear Garden

A good size, fully enclosed rear garden, laid mainly to lawn with a paved patio area abutting the property, providing an ideal seating area to enjoy the summer sunshine.



Ground Floor



First Floor

Total floor area 58.9 m² (634 sq.ft.) approx

This floor plan is for illustrative purposes only. It is not drawn to scale. Any measurements, floor areas (including any total floor area), openings and orientation are approximate. No details are guaranteed, they cannot be relied upon for any purpose and they do not form part of any agreement. No liability is taken for any error, omission or misstatement. A party must rely upon its own inspection(s). Powered by www.propertybox.io



view this property online fox-and-sons.co.uk/Property/YEO109115



welcome to

Westland Road, Yeovil

- Recently Refurbished Terrace Home
- Two Double Bedrooms
- Refitted Kitchen & Shower Room
- Driveway Parking
- Good Size Enclosed Garden

Tenure: Freehold EPC Rating: C

Council Tax Band: B

£230,000



Please note the marker reflects the postcode not the actual property

view this property online fox-and-sons.co.uk/Property/YEO109115



Property Ref:
YEO109115 - 0004

1. MONEY LAUNDERING REGULATIONS Intending purchasers will be asked to produce identification documentation at a later stage and we would ask for your co-operation in order that there is no delay in agreeing the sale. 2. These particulars do not constitute part or all of an offer or contract. 3. The measurements indicated are supplied for guidance only and as such must be considered incorrect. Potential buyers are advised to recheck measurements before committing to any expense. 4. We have not tested any apparatus, equipment, fixtures or services and it is in the buyers interest to check the working condition of any appliances. 5. Where an EPC, or a Home Report (Scotland only) is held for this property, it is available for inspection at the branch by appointment. If you require a printed version of a Home Report, you will need to pay a reasonable production charge reflecting printing and other costs. 6. We are not able to offer an opinion either written or verbal on the content of these reports and this must be obtained from your legal representative. 7. Whilst we take care in preparing these reports, a buyer should ensure that his/her legal representative confirms as soon as possible all matters relating to title including the extent and boundaries of the property and other important matters before exchange of contracts.


fox & sons



01935 412100



Yeovil@fox-and-sons.co.uk



14 Princes Street, YEOVIL, Somerset, BA20 1EW



fox-and-sons.co.uk