

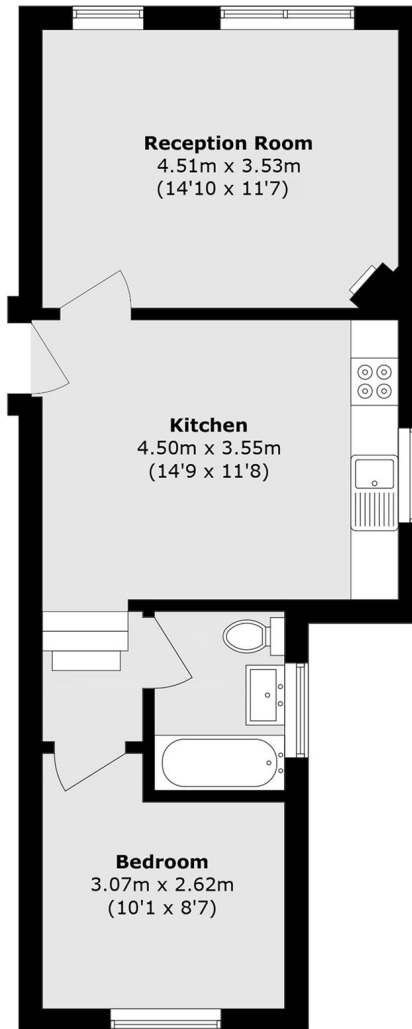


Grosvenor Road, W7

£350,000

This well-presented one bedroom end-of-terrace first floor flat with a separate kitchen and spacious living room is chain free and has the potential to extend into the loft, subject to the usual consents.

Ideally located close to the transport links and amenities on Uxbridge Road and just over half a mile from Hanwell and West Ealing (Elizabeth line) and a mile from Boston Manor (Piccadilly line) stations.



Total area (approx.): 48.7 sq. m (524.2 sq. ft)

Robertson Smith & Kempson Hanwell Sales
69 Greenford Avenue,
London, W7 1LL
020 8566 2339
hanwellsales@robertsonsmithandkempson.co.uk

Energy Rating: D. We aim to make our particulars both accurate and reliable. However they are not guaranteed; nor do they form part of an offer or contract. If you require clarification on any points then please contact us, especially if you're traveling some distance to view. Please note that appliances and heating systems have not been tested and therefore no warranties can be given as to their good working order.