

**£295,000**

**Pears Road**  
Hounslow, TW3 1AW

## PROPERTY SUMMARY

Situated within a sought-after and well-maintained development, this beautifully presented, larger-than-average second-floor apartment offers a bright and spacious accommodation, finished to a high standard and ready to move straight into.

The property comprises a spacious double bedroom with excellent built-in storage, a stylish modern bathroom, and a high-specification fitted kitchen with integrated appliances, which opens onto a generous living and dining area. The apartment also benefits from air conditioning, providing year-round comfort. A private balcony offers the perfect place to relax, while additional storage cupboards and quality finishes throughout further enhance the practicality and appeal of the home.

Residents benefit from a secure video-entry system and access to beautifully maintained communal gardens.

Gerrard Court is ideally located on the popular Pears Road, just a short walk from Hounslow High Street, offering a wide range of shops, cafés, bars and restaurants. Hounslow East Underground Station is also within easy reach, providing excellent connections to Central London and Heathrow Airport.

1



1



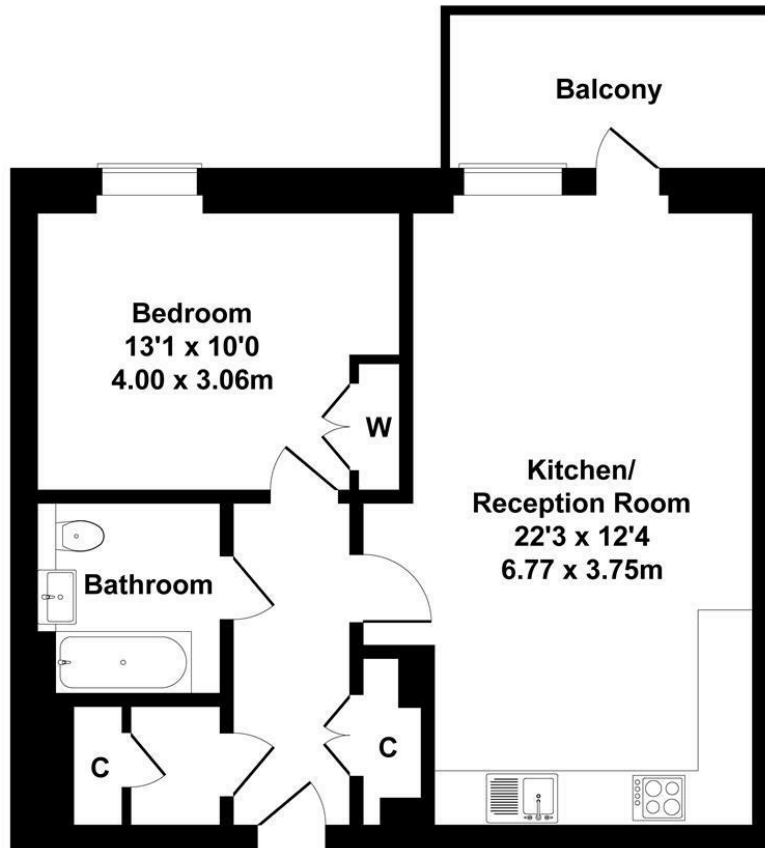
1





# Gerrard Court, Pears Road, Hounslow

Approximate Gross Internal Area  
581 sq ft - 54 sq m



Not to Scale. Produced by The Plan Portal 2026  
For Illustrative Purposes Only.

Shaw  
& Co

## LOCAL AUTHORITY

Hounslow

## TENURE

Freehold

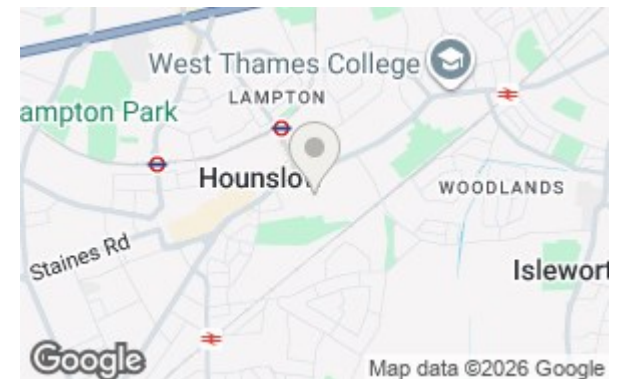
## COUNCIL TAX BAND

C

## VIEWINGS

By prior appointment only

Energy Efficiency Rating		Current	Potential
Very energy efficient - lower running costs			
(92 plus) A			
(81-91) B		83	83
(69-80) C			
(55-68) D			
(39-54) E			
(21-38) F			
(1-20) G			
Not energy efficient - higher running costs			
England & Wales		EU Directive 2002/91/EC	



Agents Note: Whilst every care has been taken to prepare these particulars, they are for guidance purposes only. All measurements are approximate and are for general guidance purposes only and whilst every care has been taken to ensure their accuracy, they should not be relied upon and potential buyers/tenants are advised to recheck the measurements

Shaw  
& Co  
ESTATE  
AGENTS

## OFFICE ADDRESS

Whitton  
Twickenham  
TW2 7LT

## OFFICE DETAILS

0208 894 3646  
whitton@shawandcoestates.com