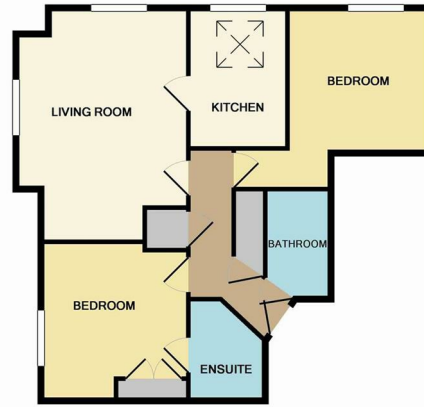




Catherine Court | 44 Hale Road | Farnham | GU9 9FB

£1,400 PCM

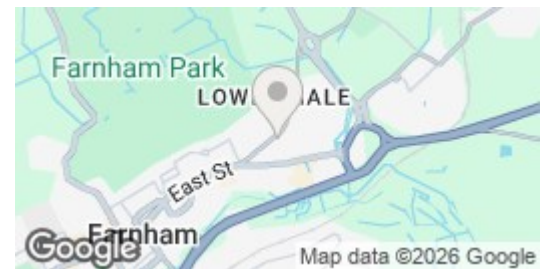
Waterfords W
Residential Sales & Lettings



TOTAL APPROX. FLOOR AREA 633 SQ.FT. (58.8 SQ.M.)

Whilst every attempt has been made to ensure the accuracy of the floor plan contained here, measurements of doors, windows, rooms and any other items are approximate and no responsibility is taken for any error, omission, or mis-statement. This plan is for illustrative purposes only and should be used as such by any prospective purchaser. The services, systems and appliances shown have not been tested and no guarantee as to their operability or efficiency can be given.
Made with Metropix ©2016

Energy Efficiency Rating		Current	Potential
Very energy efficient - lower running costs			
(92 plus) A		86	87
(81-91) B			
(69-80) C			
(55-68) D			
(39-54) E			
(21-38) F			
(1-20) G			
Not energy efficient - higher running costs			
England & Wales		EU Directive 2002/91/EC	



Description

Waterfords are delighted to present this top floor two bedroom apartment, available for rent on a unfurnished basis from 17th July 2026.

Key features

- Second Floor Apartment
- Two Bathrooms
- Communal Gardens
- Available 17th July 2026
- Minimum Term 6 Month Let
- Two Double Bedrooms
- Gated Secure Allocated Parking
- Close to Local Amenities
- Unfurnished



39 The Hart Centre
Fleet
Hampshire
GU51 3LA
01252 623330
hampshirelettings@waterfords.co.uk
<https://www.waterfords.co.uk/>