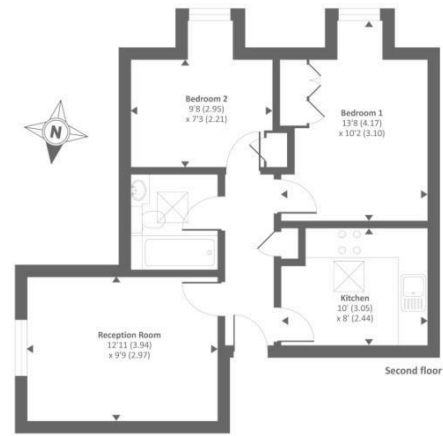




Ivy Drive | Lightwater | Surrey | GU18 5YT

£1,330 PCM

Waterfords W
Residential Sales & Lettings



Energy Efficiency Rating		Current	Potential
Very energy efficient - lower running costs			
(92 plus)	A		
(81-91)	B		
(69-80)	C	74	75
(55-68)	D		
(39-54)	E		
(21-38)	F		
(1-20)	G		
Not energy efficient - higher running costs			
England & Wales		EU Directive 2002/91/EC	



Description

Waterfords present Bright and spacious two-bedroom apartment on the second floor of a popular development on Ivy Drive, Lightwater. Offered unfurnished, it features a modern kitchen, contemporary bathroom, and two well-proportioned bedrooms. Excellent transport links and close to local amenities. Available to let from May

Key features

- Second Floor Apartment
- Separate Modern Kitchen With Appliances
- M3, M25 And A30 Within Easy Reach
- Unfurnished
- EPC C
- Two Double Bedrooms With Built In Wardrobes
- Allocated Parking And Communal Gardens
- Available May 2026
- Council Tax Band C
- Long Term Let



39 The Hart Centre
 Fleet
 Hampshire
 GU51 3LA
 01252 623330
hampshirelettings@waterfords.co.uk
<https://www.waterfords.co.uk/>