



Haddon Heights, Elizabeth Penton Way, Bampton Tiverton EX16 9GA



welcome to

Haddon Heights Elizabeth Penton Way, Bampton Tiverton

READY TO MOVE IN! Detached eco-friendly four bedroom home. Haddon Heights offers contemporary design, sustainable living, and countryside views. In brief there is an expansive open plan kitchen/living/dining room, bedroom one with dressing room & ensuite. Double carport. Front & rear gardens.

This striking home is entered via an entrance porch which leads into an entrance hall with stairs to the first floor. On the ground floor you will find bedroom one with an ensuite bathroom and dressing area. There is a further double bedroom or reception room which would work well as a home office. Completing the ground floor is a cloakroom and door to the carport.

Upstairs prepared to be wow' d by the expansive open plan living/kitchen/dining room which really is the heart of this home. This room is light and bright with two bi fold doors and soaring high ceilings. The Kitchen is very well equipped with a range of wall and base units and a peninsula. There are integrated appliances and a utility room. On this floor you will find a further two bedrooms both of which are a generous size, one with bi fold doors. Completing the first floor is a family shower room.

Outside there is a front garden which is laid to lawn with hedgerow. This property benefits from a lawned garden to the rear and decking to the side. NO ONWARD CHAIN.

These properties benefit from under floor heating and an air source heat pump.

Location

Bampton has the attraction of a village life, but also easy accessibility to the countryside of Exmoor, Somerset and Mid Devon. Just a short drive away from Tiverton. Bampton benefits from a wide range of amenities, including a doctors surgery, chemist, shops, post office, butchers, bakers and more. The Swan, The Toucan Cafe and Bawdens are very popular eating establishments.

Need To Part Exchange?

- *Make it happen with SPRING, our trusted Part-Exchange partner.
- Sell your home with no viewings, no renovations, and no chains.
- Complete within 7 days or on a date that suits you.
- Move stress-free with 14 days access to your home post completion.
- Your sale won't fall through, Spring Part-Exchange is guaranteed.
- Terms & conditions apply

Entrance Porch

Door to front and door to hall.

Entrance Hall

Door to bedroom one, bedroom two and cloakroom. Door to carport. Understairs cupboard. Stairs to first floor.





Cloakroom

Wash hand basin, WC, extractor fan, spotlights.

Bedroom One

12' 1" x 11' 3" (3.68m x 3.43m)
Window to front. TV point, opening to dressing room.

Dressing Room

7' 1" x 5' 8" (2.16m x 1.73m)
Door to ensuite.

Ensuite

Bath with shower over. Wash hand basin, WC, fully tiled, extractor fan, heated towel rail.

Bedroom Two

12' 6" x 11' 3" (3.81m x 3.43m)
Two double glazed window to front. TV point.

Stairs To First Floor

Landing

Doors to all rooms, cupboard.

Kitchen/ Dining/ Living

18' 8" x 18' 1" (5.69m x 5.51m)
Two sets of Bi fold doors. Window to front. Door to utility room. The kitchen is equipped with a range of wall and base units with worktop over. Double oven, down draft hob, one and half bowl sink and drainer. High ceilings. Integrated fridge freezer.

Utility Room

8' 2" x 4' 10" (2.49m x 1.47m)
Window to front. The utility room has a range of wall and base units with worktop over. Stainless steel sink and drainer. Space for washing machine and tumble dryer. Extractor fan. Spotlights.

Shower Room

Wash hand basin, walk in shower, WC, shaver point, extractor fan.

Bedroom Three

16' 2" x 8' 6" (4.93m x 2.59m)
Window to front. High ceiling, TV point, spotlights, loft hatch.

Bedroom Four

12' 2" x 9' 8" (3.71m x 2.95m)
Bi fold doors to rear. Spotlights, TV point.

Front Garden

The front garden is lawned. Steps to side leading to rear garden.

Rear Garden

The rear garden has a paved area and mainly laid to lawn. Decking area to side

Car Port

Door into hallway. Power and light.

Agents Note

We will endeavour to use the photographs/measurements of the actual property but may also show pictures/measurements of the show home, similar plots and/or computer generated images. Our virtual/360 tours will be of the development show homes. Floorplan images may be handed.

Reservation Fee Applies. Site management fee applies with is anticipated at £250 per annum.

Office Hours

Monday - Friday 9am- 5.30pm
Saturday- 9am- 2pm
Sundays - Closed



view this property online fox-and-sons.co.uk/Property/TVT106195



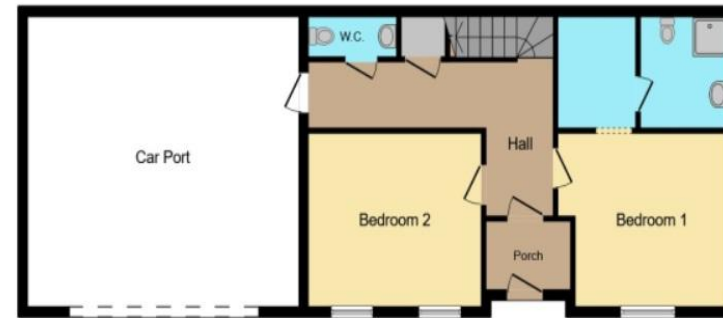
welcome to

Haddon Heights Elizabeth Penton Way, Bampton Tiverton

- Detached Four Bedroom Home
- Eco Friendly
- Large Open Plan Living areas
- Front & Rear Gardens
- Part exchange available*

Tenure: Freehold
EPC Rating: Exempt

£550,000



Ground Floor



First Floor

This floor plan is for illustrative purposes only. It is not drawn to scale. Any measurements, floor areas (including any total floor area), openings and orientation are approximate. No details are guaranteed, they cannot be relied upon for any purpose and they do not form part of any agreement. No liability is taken for any error, omission or misstatement. A party must rely upon its own inspection(s). Powered by www.focalagent.com

view this property online fox-and-sons.co.uk/Property/TVT106195



Property Ref:
TVT106195 - 0003

1. MONEY LAUNDERING REGULATIONS Intending purchasers will be asked to produce identification documentation at a later stage and we would ask for your co-operation in order that there is no delay in agreeing the sale. 2. These particulars do not constitute part or all of an offer or contract. 3. The measurements indicated are supplied for guidance only and as such must be considered incorrect. Potential buyers are advised to recheck measurements before committing to any expense. 4. We have not tested any apparatus, equipment, fixtures or services and it is in the buyers interest to check the working condition of any appliances. 5. Where an EPC, or a Home Report (Scotland only) is held for this property, it is available for inspection at the branch by appointment. If you require a printed version of a Home Report, you will need to pay a reasonable production charge reflecting printing and other costs. 6. We are not able to offer an opinion either written or verbal on the content of these reports and this must be obtained from your legal representative. 7. Whilst we take care in preparing these reports, a buyer should ensure that his/her legal representative confirms as soon as possible all matters relating to title including the extent and boundaries of the property and other important matters before exchange of contracts.

Fox & Sons is a trading name of Sequence (UK) Limited which is registered in England and Wales under company number 4268443, Registered Office is Cumbria House, 16-20 Hockliffe Street, Leighton Buzzard, Bedfordshire, LU7 1GN. VAT Registration Number is 500 2481 05.


fox & sons



01884 256041



tiverton@fox-and-sons.co.uk



36 Bampton Street, TIVERTON, Devon, EX16
6AH



fox-and-sons.co.uk