



Bodmin Grove, Hartlepool, TS26 0XD

welcome to

Bodmin Grove, Hartlepool

Deceptively spacious and beautifully proportioned, this wonderful three-bedroom terraced home offers an ideal setting for family life.

Entrance Porch

Entered via a UPVC double glazed door into the entrance porch, UPVC double glazed windows to both sides, door leading into the lounge.

Lounge

2 UPVC double glazed windows to the front, radiator, coved cornicing, concertina door leading into kitchen/ diner.

Kitchen/ Diner

Kitchen - UPVC double glazed internal window looking into conservatory, range of wall and base units with complimenting working surfaces and tiled splashback, inset electric oven and grill, four ring gas hob with extractor over, plumbing and recess for washing machine, white inset 1 1/2 bowl sink/ drainer with swan neck mixer tap, space for free standing fridge/ freezer, vinyl flooring.

Dining area - carpeted, understairs storage cupboard, stairs leading to first floor, UPVC double glazed sliding doors leading into conservatory.

Conservatory

UPVC double glazed door to rear, UPVC double glazed windows to rear and side, UPVC roof, wall is built on a brick dwarf wall.

Landing

Stairs from dining room, radiator, doors leading to all principal rooms.

Bedroom 1

2 UPVC double glazed windows to front, coved cornicing, radiator, 10 door built in wardrobes.

Bedroom 2

UPVC double glazed window to rear, radiator, coved

cornicing.

Bedroom 3

UPVC double glazed window to rear, radiator, coved cornicing.

Family Bathroom

UPVC double glazed window to the rear, panel bath with electric shower over, wash hand basin on a vanity unit, low level low flush wc, radiator, built in storage cupboards one is over bulkhead, shower cubicle with hand held shower attachment, part tiled walls, boiler is housed in one of storage cupboards.



Externally

Front Of Property

Wall and fence enclosed, planted area, patio area with steps leading to front door.

Rear Garden

Low maintenance, patio area, gate leading to the back of the property, wood built garden shed.



view this property online mannersandharrison.co.uk/Property/HAR120269



welcome to

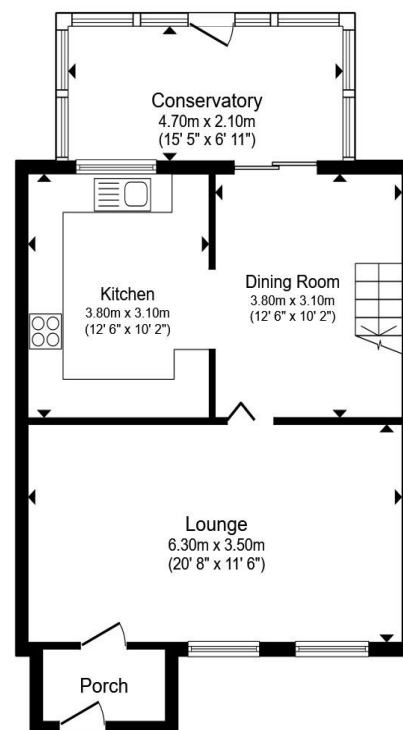
Bodmin Grove, Hartlepool

- GENEROUS LOUNGE
- OPEN PLAN KITCHEN/ DINER
- CONSERVATORY
- LOW MAINTENANCE GARDENS
- 3 WELL PROPORTIONED BEDROOMS

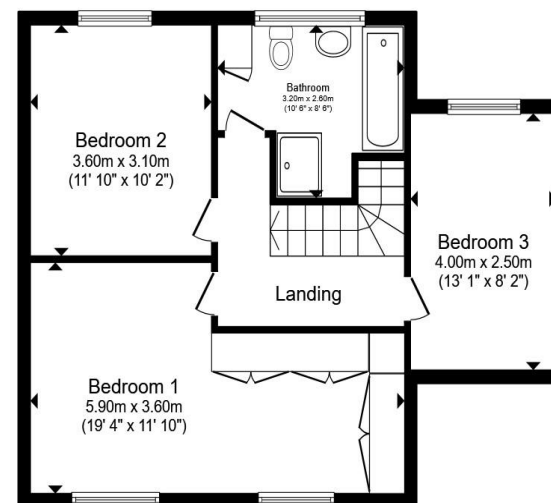
Tenure: Freehold EPC Rating: C

Council Tax Band: B

£105,000



Ground Floor



First Floor

Total floor area 114.6 m² (1,234 sq.ft.) approx

This floor plan is for illustrative purposes only. It is not drawn to scale. Any measurements, floor areas (including any total floor area), openings and orientation are approximate. No details are guaranteed, they cannot be relied upon for any purpose and they do not form part of any agreement. No liability is taken for any error, omission or misstatement. A party must rely upon its own inspection(s). Powered by www.propertybox.io



[view this property online](http://mannersandharrison.co.uk/Property/HAR120269) mannersandharrison.co.uk/Property/HAR120269



Property Ref:
HAR120269 - 0002

1. MONEY LAUNDERING REGULATIONS Intending purchasers will be asked to produce identification documentation at a later stage and we would ask for your co-operation in order that there is no delay in agreeing the sale. 2. These particulars do not constitute part or all of an offer or contract. 3. The measurements indicated are supplied for guidance only and as such must be considered incorrect. Potential buyers are advised to recheck measurements before committing to any expense. 4. We have not tested any apparatus, equipment, fixtures or services and it is in the buyers interest to check the working condition of any appliances. 5. Where an EPC, or a Home Report (Scotland only) is held for this property, it is available for inspection at the branch by appointment. If you require a printed version of a Home Report, you will need to pay a reasonable production charge reflecting printing and other costs. 6. We are not able to offer an opinion either written or verbal on the content of these reports and this must be obtained from your legal representative. 7. Whilst we take care in preparing these reports, a buyer should ensure that his/her legal representative confirms as soon as possible all matters relating to title including the extent and boundaries of the property and other important matters before exchange of contracts.

Manners & Harrison is a trading name of Sequence (UK) Limited which is registered in England and Wales under company number 4268443, Registered Office is Cumbria House, 16-20 Hockliffe Street, Leighton Buzzard, Bedfordshire, LU7 1GN. VAT Registration Number is 500 2481 05.

manners & harrison



01429 261351



Hartlepool@mannersandharrison.co.uk



Shrewsbury House 129 York Road,
HARTLEPOOL, Durham, TS26 9DW



mannersandharrison.co.uk