



**St. Marys Court, Plymouth PL7 4PE**

**welcome to**

**St. Marys Court, Plymouth**

\*\*\* ALLOCATED PARKING \*\*\*

A fantastic opportunity to purchase this ONE BEDROOM, FIRST FLOOR flat in St Mary's Court. Located close to local SHOPS and PARKS. This property has an allocated PARKING space as well as VISITOR parking and has the benefit of a LONG LEASE. Call Fox & Sons today!



### Entrance Hall

Doors to the bedroom, shower room and lounge.

### Lounge

Double glazed window to rear elevation.

### Kitchen

Wall and base units, integrated oven and hob. Space for a washing machine and fridge freezer. Double glazed window to side and rear elevation.

### Bedroom 1

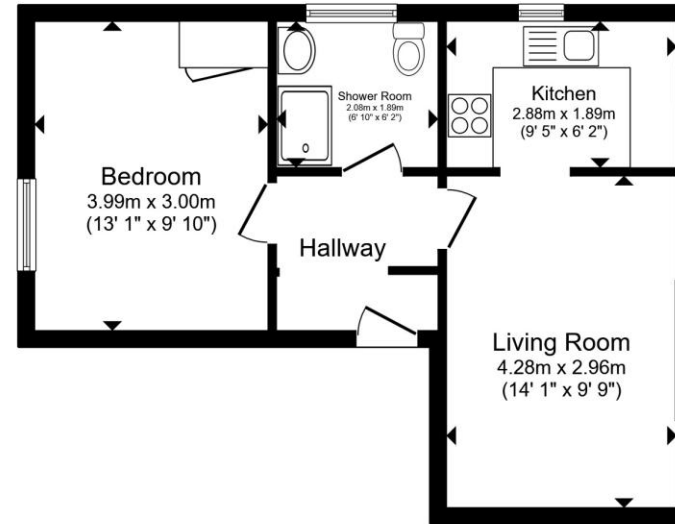
Double glazed window to side elevation.

### Shower Room

Shower cubicle with an electric shower, towel rail, WC, vanity sink and double glazed obscure window to side elevation.

### Parking

The property has an allocated parking space and a share of visitor spaces.



Total floor area 39.6 m<sup>2</sup> (427 sq.ft.) approx

This floor plan is for illustrative purposes only. It is not drawn to scale. Any measurements, floor areas (including any total floor area), openings and orientation are approximate. No details are guaranteed, they cannot be relied upon for any purpose and they do not form part of any agreement. No liability is taken for any error, omission or misstatement. A party must rely upon its own inspection(s). Powered by [www.propertybox.io](http://www.propertybox.io)



**view this property online** [fox-and-sons.co.uk/Property/PYP104726](http://fox-and-sons.co.uk/Property/PYP104726)



welcome to

## St. Marys Court, Plymouth

- One Bedroom
- First Floor
- Allocated Parking
- Visitor Parking
- Long Lease

Tenure: Leasehold EPC Rating: Awaiting

Council Tax Band: A Service Charge: 1524.67

Ground Rent: 1.00

This is a Leasehold property with details as follows; Term of Lease 999 years from 01 Jan 2017. Should you require further information please contact the branch. Please Note additional fees could be incurred for items such as Leasehold packs.

offers in the region of

**£130,000**



Please note the marker reflects the postcode not the actual property

view this property online [fox-and-sons.co.uk/Property/PYP104726](https://fox-and-sons.co.uk/Property/PYP104726)



Property Ref:  
PYP104726 - 0002

1. MONEY LAUNDERING REGULATIONS Intending purchasers will be asked to produce identification documentation at a later stage and we would ask for your co-operation in order that there is no delay in agreeing the sale. 2. These particulars do not constitute part or all of an offer or contract. 3. The measurements indicated are supplied for guidance only and as such must be considered incorrect. Potential buyers are advised to recheck measurements before committing to any expense. 4. We have not tested any apparatus, equipment, fixtures or services and it is in the buyers interest to check the working condition of any appliances. 5. Where an EPC, or a Home Report (Scotland only) is held for this property, it is available for inspection at the branch by appointment. If you require a printed version of a Home Report, you will need to pay a reasonable production charge reflecting printing and other costs. 6. We are not able to offer an opinion either written or verbal on the content of these reports and this must be obtained from your legal representative. 7. Whilst we take care in preparing these reports, a buyer should ensure that his/her legal representative confirms as soon as possible all matters relating to title including the extent and boundaries of the property and other important matters before exchange of contracts.

fox & sons



**01752 344349**



[plympton@fox-and-sons.co.uk](mailto:plympton@fox-and-sons.co.uk)



143 Ridgeway, Plympton, PLYMOUTH, Devon,  
PL7 2HJ



[fox-and-sons.co.uk](https://fox-and-sons.co.uk)