



**GLOUCESTER DRIVE**  
STAINES-UPON-THAMES

**JACKSON-STOPS** 

---

## GLOUCESTER DRIVE STAINES-UPON-THAMES, TW18

ASKING PRICE: £800,000

A beautifully presented five bedroom semi-detached family home over three floors with a well kept south facing garden, and is just a short walk from the town centre and the River Thames.

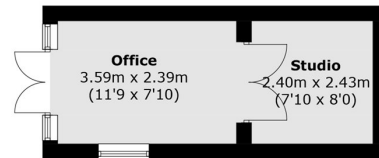
Gloucester Drive is located in the riverside town of Staines-Upon-Thames, which is home to lovely local shops and restaurants.



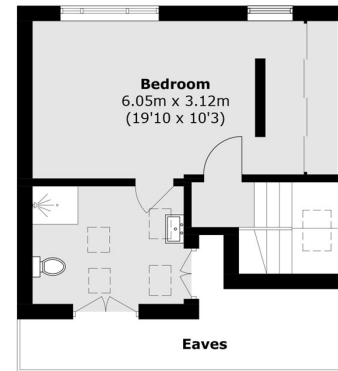
### KEY FEATURES

- Lovely Family Home
- South Facing Garden
- Modern Interior
- Five Bedrooms
- Three Bathrooms
- Garden Annexe

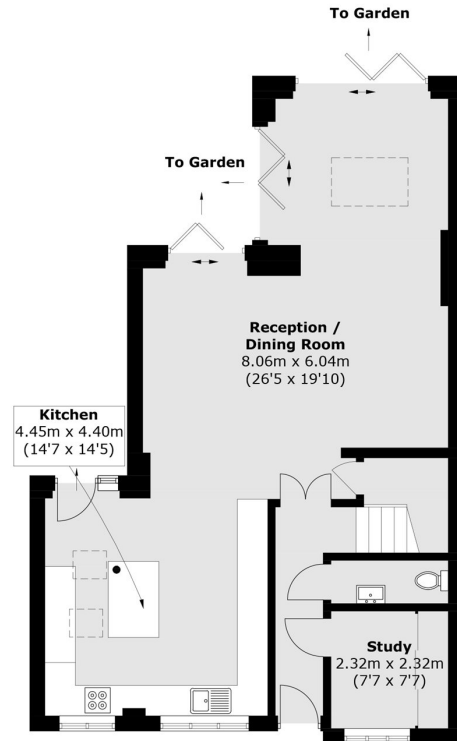




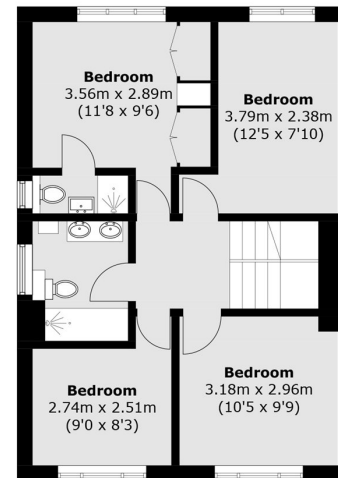
(Not Shown In Actual Location / Orientation)



**Second Floor**



**Ground Floor**



**First Floor**

Total area (approx.): 161.1 sq. m (1734.0 sq. ft)  
 Outbuilding (approx.): 15.3 sq. m (164.7 sq. ft)  
 (Excluding Eaves)

Energy Rating: C. We aim to make our particulars both accurate and reliable. However they are not guaranteed; nor do they form part of an offer or contract. If you require clarification on any points then please contact us, especially if you are travelling some distance to view. Please note that appliances and heating systems have not been tested and therefore no warranties can be given as to their good working order.

**ASKING PRICE: £800,000**

**WEYBRIDGE**

**01932 821 160**

weybridge@jackson-stops.co.uk

jackson-stops.co.uk

**JACKSON-STOPS** 