



ESTATE AGENTS

... the key to a successful move



Green Close, Stone, ST15 0JG

**Offers in the
region of £89,950**

Nestled in the charming area of Green Close, Stone, this delightful one-bedroom flat offers a perfect blend of comfort and convenience. Ideal for individuals or couples, the property features a spacious lounge that invites relaxation and social gatherings. The well-appointed kitchen provides ample space for culinary creativity, making it a joy to prepare meal. The flat is in a great location, which allows for easy access to local amenities and transport links, ensuring that everything you need is just a stone's throw away. Additionally, the property boasts a lovely rear garden, perfect for enjoying the outdoors or hosting summer barbecues. For those with vehicles, the inclusion of parking adds an extra layer of convenience.

w: www.keysestateagents.co.uk

Green Close, Stone,

ACCOMMODATION

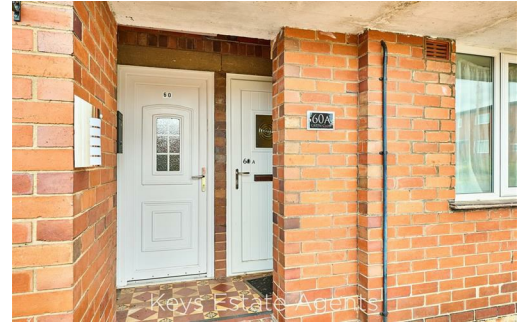
DESCRIPTION

An excellent opportunity to acquire this well-presented one-bedroom apartment, ideally situated in a popular and convenient residential location within Stone. Perfectly suited to first-time buyers, downsizers and buy-to-let investors, the property offers stylish, low-maintenance accommodation with the added benefit of allocated parking.

The accommodation is thoughtfully arranged and briefly comprises a welcoming entrance, a generous and well-proportioned lounge providing an ideal space for both relaxing and entertaining, a modern fitted kitchen, a spacious double bedroom and a well-appointed bathroom. The apartment is designed to offer comfortable and practical living, with a layout well suited to modern lifestyles.

Occupying a desirable position within easy reach of Stone town centre, local amenities, shops, commuter links and transport connections, the property combines convenience with a pleasant residential setting. With its strong rental appeal, manageable layout and attractive presentation, this apartment would make an ideal first home, investment purchase or lock-up-and-leave property.

Early viewing is strongly recommended to fully appreciate the accommodation, convenience and lifestyle appeal on offer.

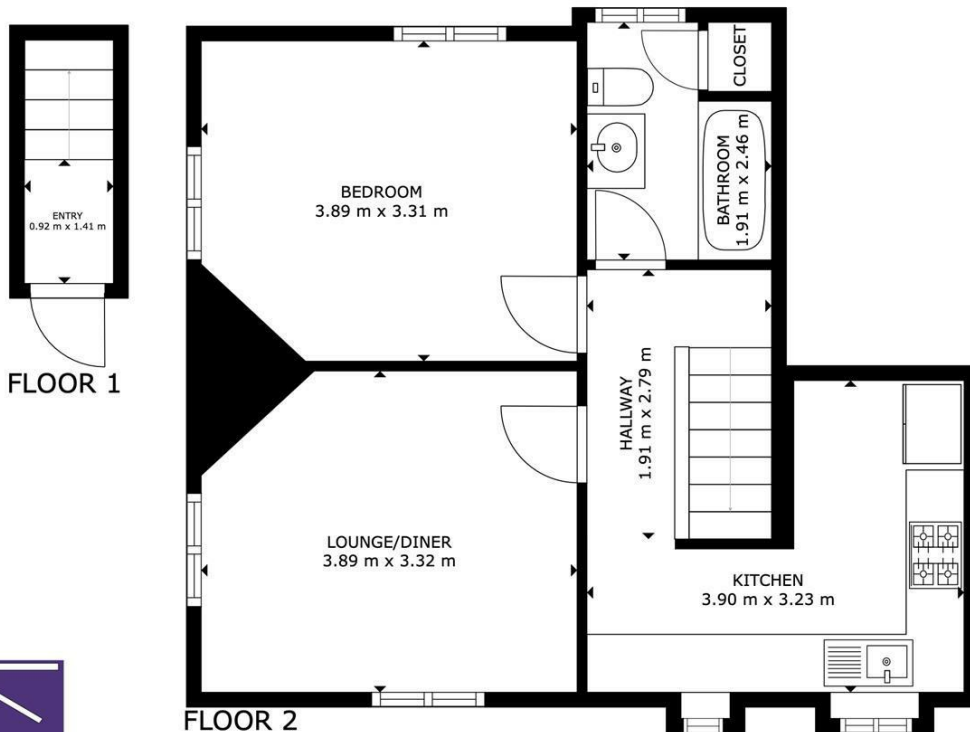


Green Close, Stone,



Energy Efficiency Rating		
	Current	Potential
Very energy efficient - lower running costs		
(92 plus) A		
(81-91) B		
(69-80) C		
(55-68) D		
(39-54) E		
(21-38) F		
(1-20) G		
Not energy efficient - higher running costs		
England & Wales	EU Directive 2002/91/EC	

Environmental Impact (CO ₂) Rating		
	Current	Potential
Very environmentally friendly - lower CO ₂ emissions		
(92 plus) A		
(81-91) B		
(69-80) C		
(55-68) D		
(39-54) E		
(21-38) F		
(1-20) G		
Not environmentally friendly - higher CO ₂ emissions		
England & Wales	EU Directive 2002/91/EC	



GROSS INTERNAL AREA
 FLOOR 1: 2 m²; FLOOR 2: 47 m²
 TOTAL: 49 m²
 SIZES AND DIMENSIONS ARE APPROXIMATE, ACTUAL MAY VARY.



Keys Independent Estate Agents Ltd for themselves and for the vendors of this property whose agents they are given notice that (i) the particulars are set out as general outline only for the guidance of intending purchasers, and do not constitute, nor constitute part of, an offer or contract; (ii) all descriptions, dimensions, references to condition and necessary permissions for use and occupation, and other details are given without responsibility and any intending purchasers should not rely on them as statements or representations of fact but must satisfy themselves by inspection or otherwise as to the correctness of each of them; (iii) no person in the employment of Keys Independent Estate Agents Ltd has any authority to make or give any representation or warranty whatsoever in relation to this property. Keys Estate Agents is the Marketing name of Keys Independent Estate Agents. Registered in England, Reg no.4554970 Directors: Danny Mayer, James Havill.

YOU HOME IS AT RISK IF YOU DO NOT KEEP UP REPAYMENTS ON A MORTGAGE OR OTHER LOAN SECURED ON IT
 Written quotations of credit terms available on request. A life assurance policy may be required