



WARE & CO
estate and letting agents

Flat 12, Wiltshire Court, Wiltshire Close, Taunton – TA1 4JS
£160,000

Flat 12 Wiltshire Court

- No onward chain
- Purpose-built second floor apartment
- Sought-after Galmington location
- Light and spacious living/dining room
- Private balcony
- Fitted kitchen
- Two good-sized bedrooms
- Bathroom with three-piece suite
- Garage and off-road parking
- Close to local amenities and transport links

COUNCIL TAX BAND B. Charge for 2026/27 - £ 2,103.24.

TENURE Leasehold.999 year lease from 31.05.1969.
Annual service charge £960.

Energy Efficiency Rating: D

SERVICES Main services of electricity, water and drainage are connected. Broadband speeds of upto 72mbps are available and good mobile signal across the four main networks (source: Ofcom).





Situated within the highly regarded residential area of Galmington, this purpose-built second floor apartment offers well-proportioned accommodation, a private balcony, garage and off-road parking, all available with the added benefit of no onward chain.

Accessed via a communal entrance hallway, the apartment also benefits from an external storage cupboard, providing useful additional storage space. Inside, a welcoming entrance hall features built-in cloaks cupboards and leads through to the principal accommodation.

The light and airy living/dining room is a particular feature of the property, enjoying plenty of natural light and direct access onto a private balcony, creating an ideal space to relax and enjoy the outlook. The fitted kitchen offers a range of storage units and work surfaces, providing practical everyday functionality.

There are two generous bedrooms, both offering excellent flexibility for a variety of buyers, together with a bathroom fitted with a three-piece suite.

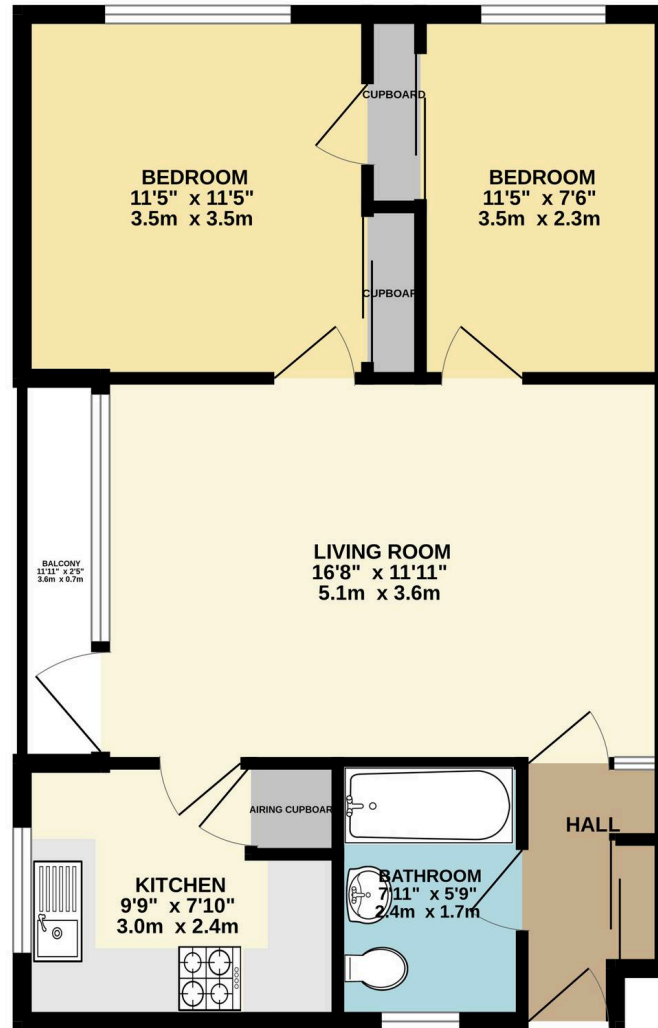
The property benefits from an allocated parking space together with a single garage, providing valuable parking and storage. Well-maintained communal grounds surround the apartment.

THE AREA

Wiltshire Court is conveniently located within the popular Galmington area on the western side of Taunton. The property enjoys easy access to a wide range of everyday amenities including local shops, supermarkets, healthcare facilities, public houses and cafés. Nearby Musgrove Park Hospital is within easy reach, whilst Taunton town centre offers an extensive range of shopping, leisure and dining facilities. The area is well served by public transport links and provides convenient access to the M5 motorway at Junction 25, making it an excellent location for commuters. There are also a number of attractive parks, open green spaces and countryside walks nearby.



GROUND FLOOR





Ware & Co

Ware & Co, 53 Bridge Street - TA1 1TP

01823259604 • info@wareandco.com • www.wareandco.com

