



Apollo Drive, Waterlooville PO7 8AD

welcome to

Apollo Drive, Waterloo

Spacious three bed terraced home in need of work with garage, kitchen, utility/WC, and open-plan lounge/diner. Two doubles, one single, garden, no chain — ideal for first-time buyers near amenities and transport.

Entrance

Storage cupboard, door to WC. Utility area and through to kitchen.

W C

Double glazed window to side aspect. Low level WC.

Utility Space

Space for appliances.

Kitchen

Double glazed window to front aspect. Range of wall and base units with work surface over, incorporating one and a half bowl sink unit with mixer tap over. Built-in double oven and gas hob with extractor hood over. Breakfast bar. Space for appliances.

Lounge / Diner

Double glazed window and door to rear aspect. Laminate flooring, two radiators. Stairs leading to first floor.

First Floor Landing

Doors to:

Bedroom One

Double glazed window to front aspect. Wood flooring.

Bedroom Two

Double glazed window to rear aspect. Wood flooring.

Bedroom Three

Double glazed window to rear aspect. Wood flooring.

Wet Room

Double glazed window to front aspect. Wet room flooring with drainage, shower area, low level WC, wash hand basin.

Outside

Front

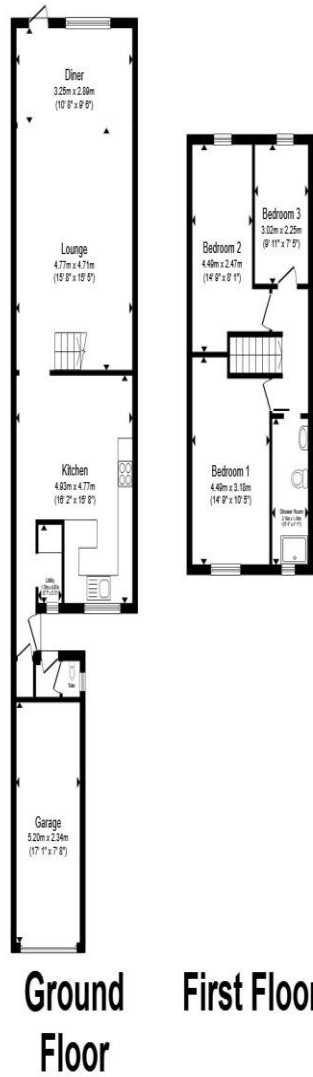
Driveway providing off road parking, leading to garage. Gated entrance to front patio leading to front door.

Garage

Up and over door.

Rear Garden

Enclosed by panel fencing, laid to patio with raised flower bed. Rear pedestrian entrance.



Total floor area 119.6 m² (1,287 sq.ft.) approx

This floor plan is for illustrative purposes only. It is not drawn to scale. Any measurements, floor areas (including any total floor area), openings and orientation are approximate. No details are guaranteed, they cannot be relied upon for any purpose and they do not form part of any agreement. No liability is taken for any error, omission or misstatement. A party must rely upon its own inspection(s). Powered by www.propertybox.io



welcome to
Apollo Drive,
Waterlooville

- No Forward Chain
- In Need of Work
- Three Bed Terraced House
- Utility Area
- Open Plan Lounge/Dining Area

Tenure: Freehold EPC Rating: C
Council Tax Band: B

offers in excess of
£280,000



view this property online fox-and-sons.co.uk/Property/WLV109822



Property Ref:
WLV109822 - 0004

1. MONEY LAUNDERING REGULATIONS Intending purchasers will be asked to produce identification documentation at a later stage and we would ask for your co-operation in order that there is no delay in agreeing the sale. 2. These particulars do not constitute part or all of an offer or contract. 3. The measurements indicated are supplied for guidance only and as such must be considered incorrect. Potential buyers are advised to recheck measurements before committing to any expense. 4. We have not tested any apparatus, equipment, fixtures or services and it is in the buyers interest to check the working condition of any appliances. 5. Where an EPC, or a Home Report (Scotland only) is held for this property, it is available for inspection at the branch by appointment. If you require a printed version of a Home Report, you will need to pay a reasonable production charge reflecting printing and other costs. 6. We are not able to offer an opinion either written or verbal on the content of these reports and this must be obtained from your legal representative. 7. Whilst we take care in preparing these reports, a buyer should ensure that his/her legal representative confirms as soon as possible all matters relating to title including the extent and boundaries of the property and other important matters before exchange of contracts.

Fox & Sons is a trading name of Sequence (UK) Limited which is registered in England and Wales under company number 4268443, Registered Office is Cumbria House, 16-20 Hockliffe Street, Leighton Buzzard, Bedfordshire, LU7 1GN. VAT Registration Number is 500 2481 05.


fox & sons



023 9226 2447



Waterlooville@fox-and-sons.co.uk



81B London Road, WATERLOOVILLE,
Hampshire, PO7 7ES



fox-and-sons.co.uk