



Yoells Lane, Waterlooville PO8 9SQ

welcome to

Yoells Lane, Waterloo

Immaculate four/ five bed detached home in sought-after Lovedean. Stunning kitchen/diner with island and bi-fold doors, four double bedrooms, south-facing garden, gated driveway, solar panels and battery storage.

Entrance Hall

Laminate flooring, Carpeted stairs leading to first floor, door to cloakroom. Doors to:

Cloakroom

Double glazed window to front aspect. Low level WC, wash hand basin set over vanity unit, radiator.

Lounge

Double glazed window to side aspect, double glazed sliding door to sun room. Carpet flooring, radiator, log burner.

Kitchen / Diner

Double glazed windows to front and side aspects. Double glazed bi-fold doors to rear garden. Range of wall and base units with work surface over incorporating inset one and a half bowl sink unit with mixer tap over. Plinth heater under the sink. Kitchen island. Space for upright fridge/freezer, range style oven with hob and extractor hood over, Wood laminate flooring, spotlights to kitchen area, radiator to dining area.

Utility Room

Double glazed window to rear aspect. Range of wall and base units, one and a half bowl sink unit, space for washing machine and other appliances. Wood laminate flooring, radiator, spotlights.

Sun Room

Double glazed to sides and rear aspect. Double glazed French doors leading to rear garden. Laminate flooring.

Bedroom Five / Office

Double glazed window to front aspect. Carpet flooring, radiator.

First Floor Landing

Bedroom One

Double glazed window to front and side aspects. Radiator, carpet flooring, door to dressing room with built-in wardrobes and door to en-suite shower room.

En-Suite Shower Room

Double glazed window to rear aspect. Partly tiled with walk-in shower, wash hand basin and low level WC set in vanity unit with enclosed cistern. Electric towel rail, under floor heating.

Bedroom Two

Double glazed window to front aspect. Carpet flooring, radiator, wardrobes.

Bedroom Three

Double glazed windows to rear and side aspects. Carpet flooring, radiator, wardrobes.

Bedroom Four

Double glazed window to rear aspect. Carpet flooring, radiator.

Bathroom

Double glazed window to front aspect. Panel enclosed bath with shower attachment, shower cubicle, wash hand basin and low level WC set within vanity unit with enclosed cistern, aqua wall panelling, heated towel rail. Under floor heating.

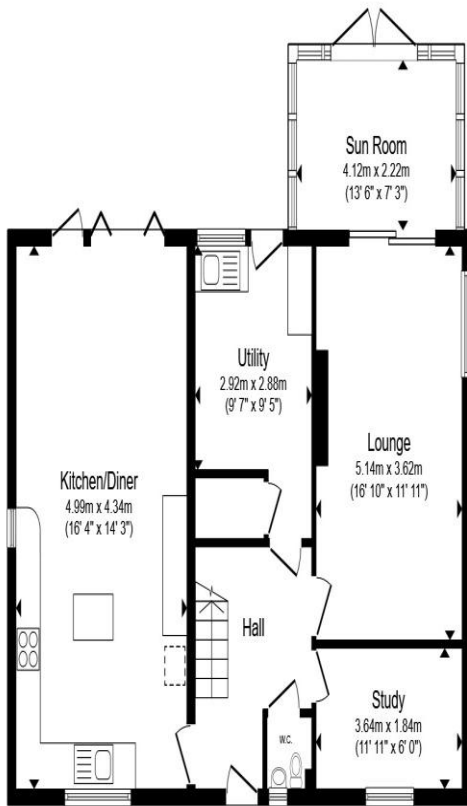
Outside

Front

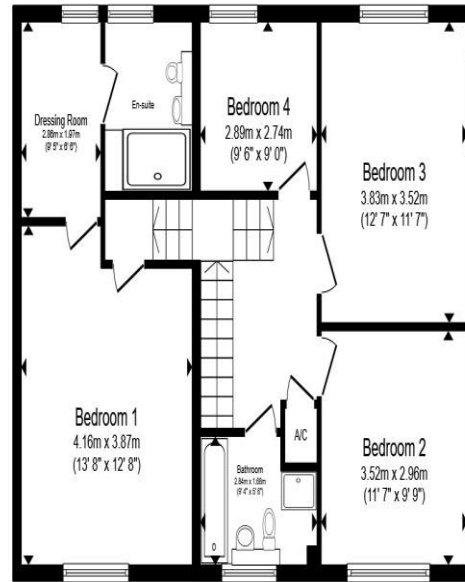
Front garden with shingle and pathway to front door.

Rear Garden

Gated block paved driveway providing off road parking. Wooden shed, Decked area, patio, lawn and flower bed.



Ground Floor



First Floor

Total floor area 165.9 m² (1,785 sq.ft.) approx

This floor plan is for illustrative purposes only. It is not drawn to scale. Any measurements, floor areas (including any total floor area), openings and orientation are approximate. No details are guaranteed, they cannot be relied upon for any purpose and they do not form part of any agreement. No liability is taken for any error, omission or misstatement. A party must rely upon its own inspection(s). Powered by www.propertybox.io



welcome to
Yoells Lane,
Waterlooville

- Four / Five Bed Detached House
- Gated Driveway & Solar Panels
- Sought After Location
- Utility Room
- En-Suite & Dressing Area

Tenure: Freehold EPC Rating: Awaited
Council Tax Band: D

£650,000



view this property online fox-and-sons.co.uk/Property/WLV109814



Property Ref:
WLV109814 - 0003

1. MONEY LAUNDERING REGULATIONS Intending purchasers will be asked to produce identification documentation at a later stage and we would ask for your co-operation in order that there is no delay in agreeing the sale. 2. These particulars do not constitute part or all of an offer or contract. 3. The measurements indicated are supplied for guidance only and as such must be considered incorrect. Potential buyers are advised to recheck measurements before committing to any expense. 4. We have not tested any apparatus, equipment, fixtures or services and it is in the buyers interest to check the working condition of any appliances. 5. Where an EPC, or a Home Report (Scotland only) is held for this property, it is available for inspection at the branch by appointment. If you require a printed version of a Home Report, you will need to pay a reasonable production charge reflecting printing and other costs. 6. We are not able to offer an opinion either written or verbal on the content of these reports and this must be obtained from your legal representative. 7. Whilst we take care in preparing these reports, a buyer should ensure that his/her legal representative confirms as soon as possible all matters relating to title including the extent and boundaries of the property and other important matters before exchange of contracts.

Fox & Sons is a trading name of Sequence (UK) Limited which is registered in England and Wales under company number 4268443, Registered Office is Cumbria House, 16-20 Hockliffe Street, Leighton Buzzard, Bedfordshire, LU7 1GN. VAT Registration Number is 500 2481 05.

fox & sons



023 9226 2447



Waterlooville@fox-and-sons.co.uk



81B London Road, WATERLOOVILLE,
Hampshire, PO7 7ES



fox-and-sons.co.uk