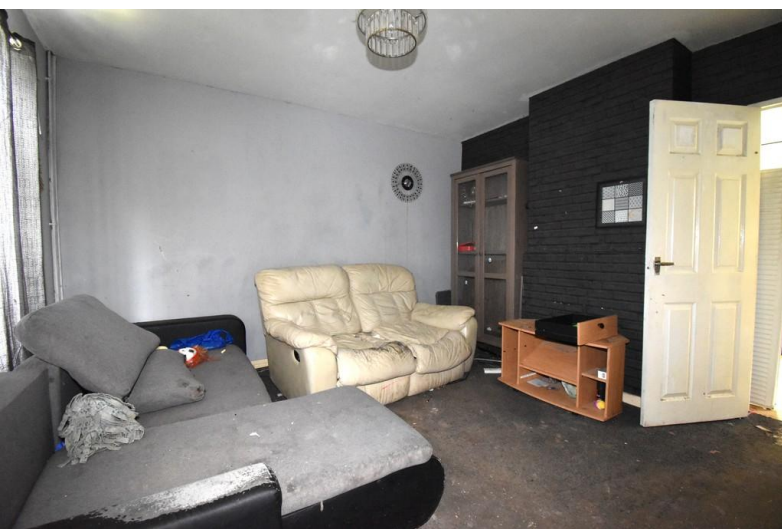


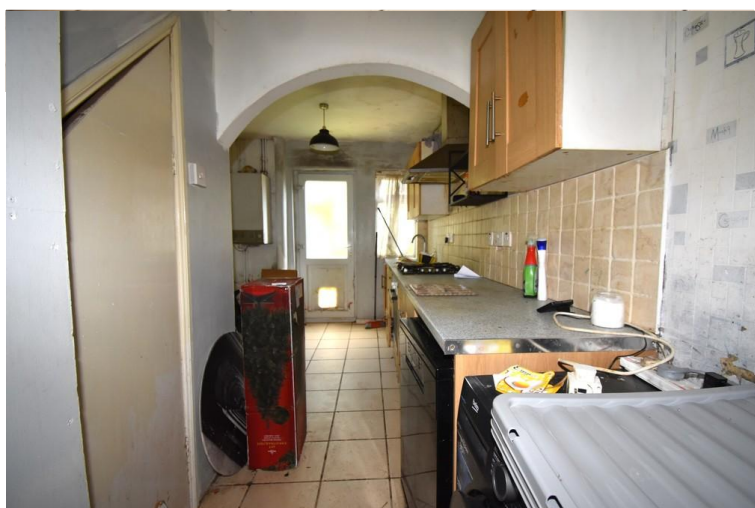


**Meadfoot Road
Coventry
CV3 3DR**

- ****WORK REQUIRED****
- Off road parking
- Fully double glazed
- Gas central heating

Asking Price Of £165,000
EPC Rating 'A'





Property Description

ABOUT THE PROPERTY

Looking for your next DIY project? Then look no further! Come and check out this three-bedroom mid-terrace home. In the heart of CV3 this home has the potential to be a great family home – REQUIRES RENOVATION.

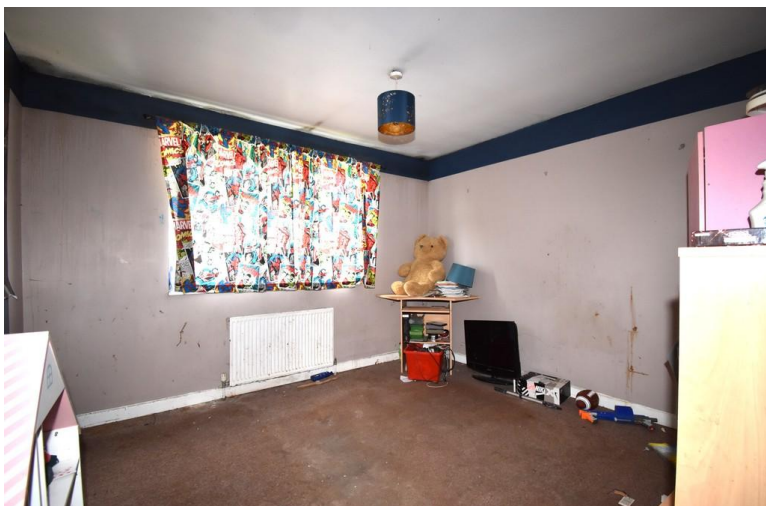
On the ground floor of this home is the lounge and family kitchen.

Moving on up to the first floor you will discover three bedrooms and the bathroom.

With off road parking and a short distance to Jaguar Land Rover – Whitley, this home could be your forever home or a great investment opportunity.

If you're thinking of buying to let then you could expect a rental income of £1,200 per calendar month.

So, what ARE you waiting for? Call Cloud9 Estates today to book your viewing!





Important Note To Purchasers

As part of compliance with Anti-Money Laundering Regulations, prospective purchasers will be required to provide identification documents at a later stage. Your cooperation in this matter is appreciated to ensure there are no unnecessary delays in the sale process.

While we strive to provide accurate and reliable sales particulars, they do not constitute or form part of any offer or contract. No information provided should be relied upon as a statement of fact. Additionally, any services, systems, or appliances listed have not been tested by us, and we make no guarantees regarding their functionality or efficiency.

All measurements are intended as a general guide for prospective buyers and may not be exact. Some details may be subject to vendor approval. If you require further clarification, particularly if you are traveling a significant distance to view the property, please contact us.

The final agreement on fixtures and fittings will be determined between the buyer and seller through the official fixtures and fittings form, which will form part of the legal contract handled by the conveyancing solicitors. As the marketing estate agent, none of our particulars or discussions are legally binding, only formal solicitor documentation holds legal weight.

Cloud9 Estates has not verified the legal title of the property, and buyers are advised to seek confirmation through their solicitor.



LOUNGE / DINER

2.7m x 6.3m max

LOUNGE

3.8m x 3.6m max

BEDROOM ONE

3.7m x 3.5m max

BEDROOM TWO

3.8m x 3.1m max

BEDROOM THREE

2.5m x 3.8m max

BATHROOM

2.4m x 1.6m max



Score	Energy rating	Current	Potential
92+	A		
81-91	B		86 B
69-80	C	72 C	
55-68	D		
39-54	E		
21-38	F		
1-20	G		

108 Walsgrave Road
 Coventry
 Warwickshire
 CV2 4ED

www.doud9estates.co.uk
 sales@doud9estates.co.uk
 02476 263 660

Agents Note: Whilst every care has been taken to prepare these sales particulars, they are for guidance purposes only. All measurements are approximate and are for general guidance purposes only and whilst every care has been taken to ensure their accuracy, they should not be relied upon and potential buyers are advised to recheck the measurements