



Queens Avenue, Newport Pagnell, MK16 8EU

welcome to

Queens Avenue, Newport Pagnell

*** NEWLY RENOVATED***OVERLOOKING BURY FIELD**This beautifully renovated three-bedroom home offers a stylish kitchen/dining area with bi-fold doors onto the rear garden, cloakroom, utility room and a refitted modern family bathroom. Within walking distance to the high street and excellent schools.

Entrance Hall

Double-glazed door to the front, stairs to the first floor, wood effect flooring and double-glazed window to the side. Doors to the cloakroom and lounge.

Cloakroom

Wash hand basin with mixer tap set in a vanity unit with a cupboard under and a low-level WC. Heated towel rail and extractor fan.

Lounge

Feature fireplace, carpet, radiator and double-glazed window to the front. Open to the dining room.

Dining Room

Wood effect flooring and space for a dining table and chairs. Door to the utility room. Open to the kitchen.

Kitchen

Fitted with a mix of wall and base units with work surface over, single bowl sink with mixer tap and drainer, integrated eye-level electric oven and induction hob. Integrated dishwasher and fridge/freezer. Vertical radiator and wood effect flooring. Skylight and double-glazed bi-fold doors leading out to the garden.

Utility Room

Fitted with base units with work surface over, sink with drainer, space for a washing machine, wood effect flooring and skylight. Heated towel rail and double-glazed door to the side.

First Floor Landing

Stairs from the ground floor, carpet, radiator and loft access. Doors to all bedrooms and the family shower room.

Bedroom One

Radiator, carpet and double-glazed window to the front.

Bedroom Two

Radiator, carpet and double-glazed window to the rear.

Bedroom Three

Radiator, carpet and double-glazed window to the front.

Shower Room

Partially tiled with a wash hand basin with mixer tap set in a vanity unit, low-level WC with integrated flush and a double shower cubicle. Heated towel rail and double-glazed obscured window to the rear.





Outside
Front Garden

Block paved frontage providing off-road parking.

Rear Garden

Enclosed by fencing, hedging and brick wall, the garden is mainly laid to lawn with a patio area and gated side access. The garden overlooks bury field.



view this property online [browbandmerry.co.uk/Property/NPL108252](https://www.browbandmerry.co.uk/Property/NPL108252)



welcome to

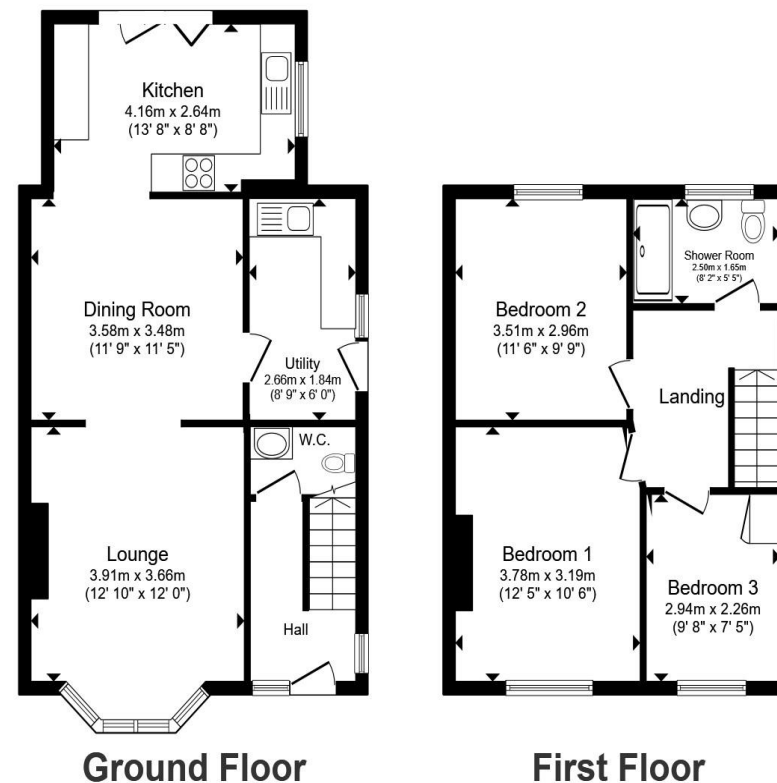
Queens Avenue, Newport Pagnell

- NEWLY RENOVATED
- THREE BEDROOM HOME
- DOWNSTAIRS CLOAKROOM
- UTILITY ROOM
- REAR GARDEN OVERLOOKING BURY FIELD

Tenure: Freehold EPC Rating: C

Council Tax Band: C

£475,000



Total floor area 97.4 m² (1,048 sq.ft.) approx

This floor plan is for illustrative purposes only. It is not drawn to scale. Any measurements, floor areas (including any total floor area), openings and orientation are approximate. No details are guaranteed, they cannot be relied upon for any purpose and they do not form part of any agreement. No liability is taken for any error, omission or misstatement. A party must rely upon its own inspection(s). Powered by www.propertybox.io



view this property online brownandmerry.co.uk/Property/NPL108252



Property Ref:
NPL108252 - 0002

1. MONEY LAUNDERING REGULATIONS Intending purchasers will be asked to produce identification documentation at a later stage and we would ask for your co-operation in order that there is no delay in agreeing the sale. 2. These particulars do not constitute part or all of an offer or contract. 3. The measurements indicated are supplied for guidance only and as such must be considered incorrect. Potential buyers are advised to recheck measurements before committing to any expense. 4. We have not tested any apparatus, equipment, fixtures or services and it is in the buyers interest to check the working condition of any appliances. 5. Where an EPC, or a Home Report (Scotland only) is held for this property, it is available for inspection at the branch by appointment. If you require a printed version of a Home Report, you will need to pay a reasonable production charge reflecting printing and other costs. 6. We are not able to offer an opinion either written or verbal on the content of these reports and this must be obtained from your legal representative. 7. Whilst we take care in preparing these reports, a buyer should ensure that his/her legal representative confirms as soon as possible all matters relating to title including the extent and boundaries of the property and other important matters before exchange of contracts.

Brown & Merry is a trading name of Sequence (UK) Limited which is registered in England and Wales under company number 4268443, Registered Office is Cumbria House, 16-20 Hockliffe Street, Leighton Buzzard, Bedfordshire, LU7 1GN. VAT Registration Number is 500 2481 05.



01908 611242



newportpagnell@brownandmerry.co.uk



74A High Street, Newport Pagnell, MILTON KEYNES, Buckinghamshire, MK16 8AQ



brownandmerry.co.uk