

Principle Point Bridge Road East

, Welwyn Garden City, AL7 1HX

£1,200 Per month

We are proud to present this studio flat located in the Principle Point Building. It benefits from a generous living space with a separate bedroom and bathroom allocation, all finished to a high standard.

The property is located approximately 10 minutes walk away from Welwyn Garden City station and benefits from several surround amenities.

It is available on an unfurnished basis.

Viewing

Please contact us on 020 3198 4517 if you wish to arrange a viewing appointment for this property or require further information.



0



1



1



B

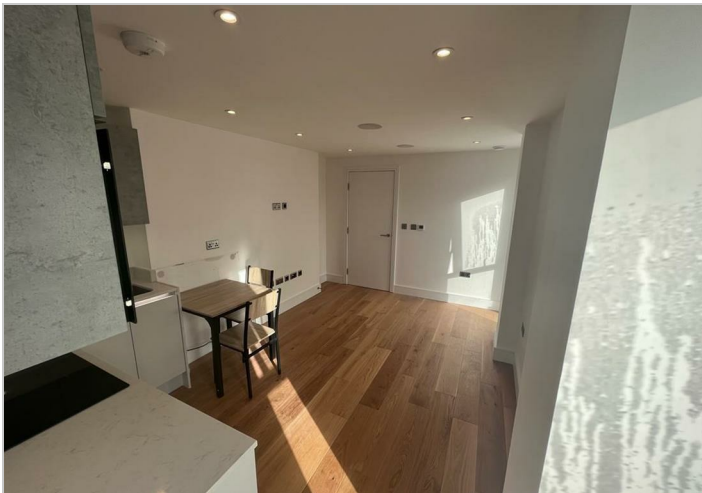
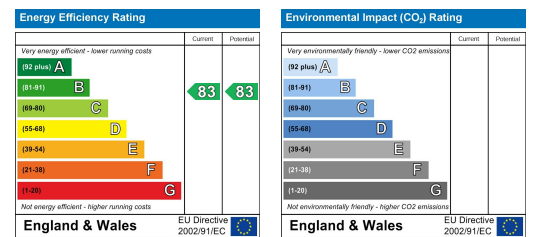
Floor Plan



Area Map



Energy Efficiency Graph



These particulars, whilst believed to be accurate are set out as a general outline only for guidance and do not constitute any part of an offer or contract. Intending purchasers should not rely on them as statements of representation of fact, but must satisfy themselves by inspection or otherwise as to their accuracy. No person in this firm's employment has the authority to make or give any representation or warranty in respect of the property.