



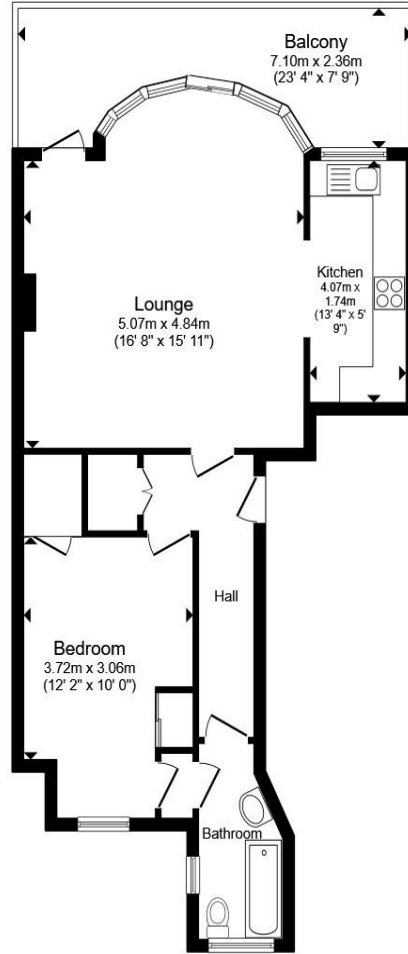
Hartley Court - Knole Road, Bexhill-On-Sea TN40 1LH

welcome to

Hartley Court - Knole Road, Bexhill-On-Sea

Presenting a superb apartment situated directly on the sought-after Bexhill seafront, this impressive home offers an outstanding lifestyle opportunity with no onward chain. The property boasts an open plan living space that is flooded with natural light & access to a private balcony. VIEW TODAY!!





Entrance Hallway

Lounge

16' 8" x 15' 11" (5.08m x 4.85m)

Kitchen

13' 4" x 5' 9" (4.06m x 1.75m)

Balcony

23' 4" x 7' 9" (7.11m x 2.36m)

Bedroom One

12' 2" x 10' (3.71m x 3.05m)

Bathroom

Total floor area 63.9 m² (687 sq.ft.) approx

This floor plan is for illustrative purposes only. It is not drawn to scale. Any measurements, floor areas (including any total floor area), openings and orientation are approximate. No details are guaranteed, they cannot be relied upon for any purpose and they do not form part of any agreement. No liability is taken for any error, omission or misstatement. A party must rely upon its own inspection(s). Powered by www.propertybox.io



welcome to

Hartley Court - Knole Road, Bexhill-On-Sea

- One Double Bedroom
- No Onward Chain
- Sea Views
- Private Balcony
- Open Plan Living

Tenure: Leasehold EPC Rating: Exempt

Council Tax Band: B Service Charge: 3000.00

Ground Rent: Ask Agent

This is a Leasehold property with details as follows; Term of Lease 125 years from 24 Jun 2006. Should you require further information please contact the branch. Please Note additional fees could be incurred for items such as Leasehold packs.

£290,000



Please note the marker reflects the postcode not the actual property

view this property online fox-and-sons.co.uk/Property/BOS111918



Property Ref:
BOS111918 - 0004

1. MONEY LAUNDERING REGULATIONS Intending purchasers will be asked to produce identification documentation at a later stage and we would ask for your co-operation in order that there is no delay in agreeing the sale. 2. These particulars do not constitute part or all of an offer or contract. 3. The measurements indicated are supplied for guidance only and as such must be considered incorrect. Potential buyers are advised to recheck measurements before committing to any expense. 4. We have not tested any apparatus, equipment, fixtures or services and it is in the buyers interest to check the working condition of any appliances. 5. Where an EPC, or a Home Report (Scotland only) is held for this property, it is available for inspection at the branch by appointment. If you require a printed version of a Home Report, you will need to pay a reasonable production charge reflecting printing and other costs. 6. We are not able to offer an opinion either written or verbal on the content of these reports and this must be obtained from your legal representative. 7. Whilst we take care in preparing these reports, a buyer should ensure that his/her legal representative confirms as soon as possible all matters relating to title including the extent and boundaries of the property and other important matters before exchange of contracts.

fox & sons



01424 224243



BexhillonSea@fox-and-sons.co.uk



1 Devonshire Square, BEXHILL-ON-SEA, East Sussex, TN40 1AB



fox-and-sons.co.uk