



Brynhyfyd Terrace, £160,000

- Two Bedroom
- Mid-Terrace
- Recently Refurbished
- Move In Ready
- Sought-After Location
- EPC Rating: C



 2  1  1



About the property

This newly refurbished two-bedroom mid-terrace property offers an excellent opportunity for first-time buyers, investors, or those looking to downsize. Beautifully updated throughout, the home is presented to a high standard and is ready for immediate occupation, allowing new owners to move straight in and enjoy all it has to offer.

The accommodation comprises a bright and welcoming living room, providing a comfortable space for relaxation and everyday living. The property's fresh décor and modern finishes create a light, airy atmosphere throughout, enhancing the sense of space and style. The well-appointed kitchen offers ample storage and worktop space, making it both practical and functional for daily use.

To the first floor, there are two well-proportioned bedrooms, each offering comfortable accommodation and plenty of natural light. The bathroom has been tastefully refurbished with modern fittings, completing the home's attractive interior.

The refurbishment has been carried out with care, making it an ideal purchase for buyers seeking a hassle-free move. Neutral décor throughout provides the perfect blank canvas for personalisation.

Conveniently located close to local amenities, schools, and transport links, this attractive mid-terrace home combines modern living with everyday convenience. Offering stylish, move-in-ready accommodation throughout, it is sure to appeal to a wide range of purchasers. Early viewing is strongly recommended for this superb home.

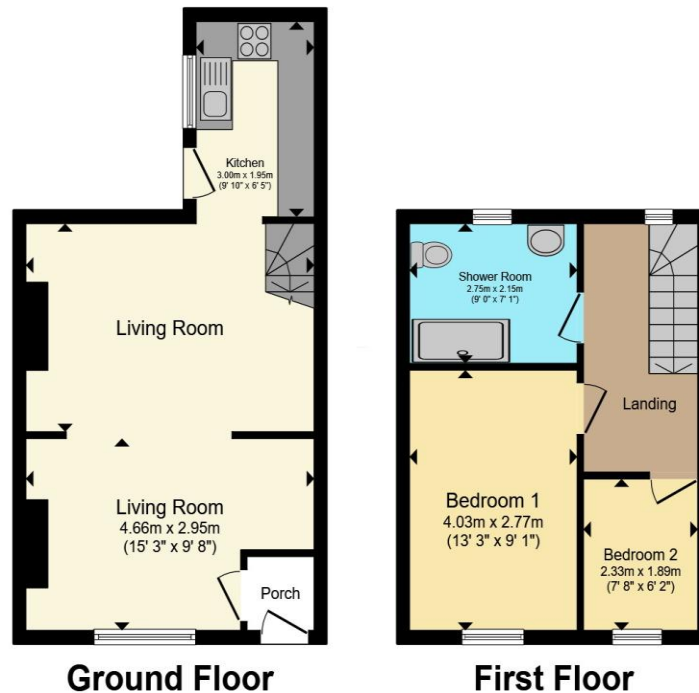


Accommodation

01495360922

ebbwwale@peteralan.co.uk

Floorplan



Total floor area 64.0 m² (689 sq.ft.) approx

This floor plan is for illustrative purposes only. It is not drawn to scale. Any measurements, floor areas (including any total floor area), openings and orientation are approximate. No details are guaranteed, they cannot be relied upon for any purpose and they do not form part of any agreement. No liability is taken for any error, omission or misstatement. A party must rely upon its own inspection(s). Powered by www.propertybox.io



Important Information

Note while we endeavour to make our sales details accurate and reliable, if there is any point which is of particular interest to you, please contact the office and we will be pleased to confirm the position for you. We have not personally tested any apparatus, equipment, fixtures, fittings or services and cannot verify they are in working order or fit for their purposes. Nothing in these particulars is intended to indicate that carpets or curtains, furnishings or fittings, electrical goods (whether wired or not). Gas fires or light fittings or any other fixtures not expressly included form part of the property offered for sale. This computer generated Floorplan, if applicable, is intended as a general guide to the layout and design of the property. It is not to scale and should not be relied upon for dimensions. Tenure: We cannot confirm the tenure of the property as we have not had access to the legal documents. The buyer is advised to obtain verification from their solicitor or surveyor.

Peter Alan Limited is registered in England and Wales under company number 2073153, Registered Office is Cumbria House, 16-20 Hockliffe Street, Leighton Buzzard, Bedfordshire, LU7 1GN. VAT Registration Number is 500 2481 05. For activities relating to regulated mortgages and non-investment insurance contracts, Peter Alan Limited is an appointed representative of Connells Limited which is authorised and regulated by the Financial Conduct Authority. Connells Limited's Financial Services Register number is 302221. Most buy-to-let

