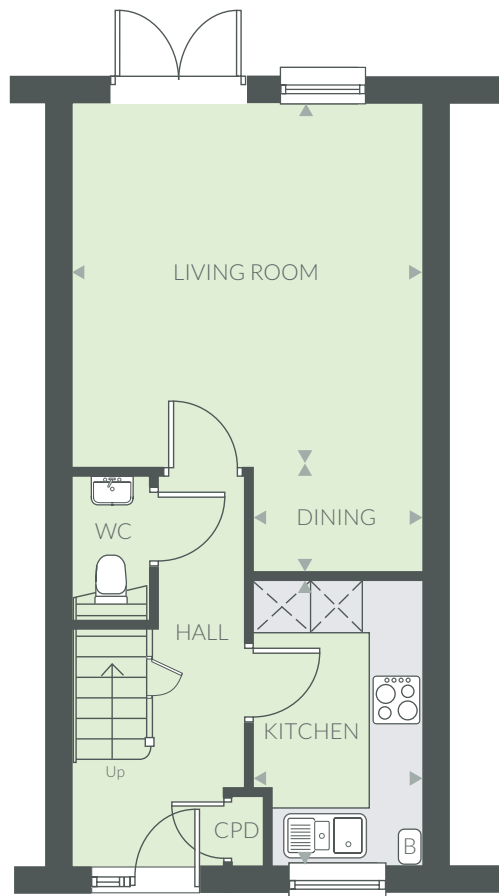


THE ELM



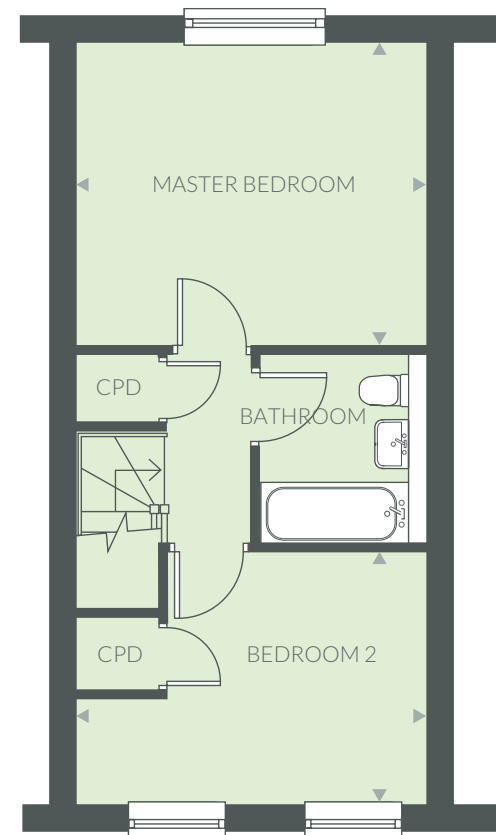
THE ELM

A two bedroom house with parking.



GROUND FLOOR

Living Room	4.0m x 3.7m	13'3" x 12'3"
Dining	1.9m x 1.2m	6'5" x 4'0"
Kitchen	3.2m x 1.9m	10'4" x 6'5"



FIRST FLOOR

Master Bedroom	4.0m x 3.0m	13'3" x 10'0"
Bedroom 2	4.0m x 2.9m	13'3" x 9'7"

KEY: (B) Boiler CPD Cupboard

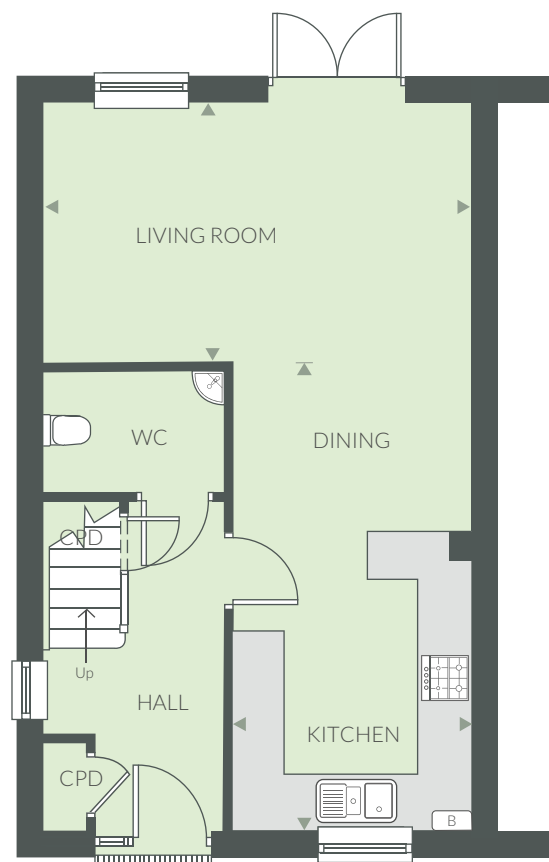
Computer generated image is not to scale. Finishes and materials may vary from those shown. Landscaping is illustrative only. Different styles of this house type may have a varied layout or larger dimensions. Please note floor plans and dimensions are taken from architectural drawings and are for guidance only, please ask to see plot-specific working drawings. Kitchen layouts are for illustrative purposes only, please ask to see separate kitchen layouts. Measurements are taken from working drawings and cover carpeted floor area only.

THE IRIS



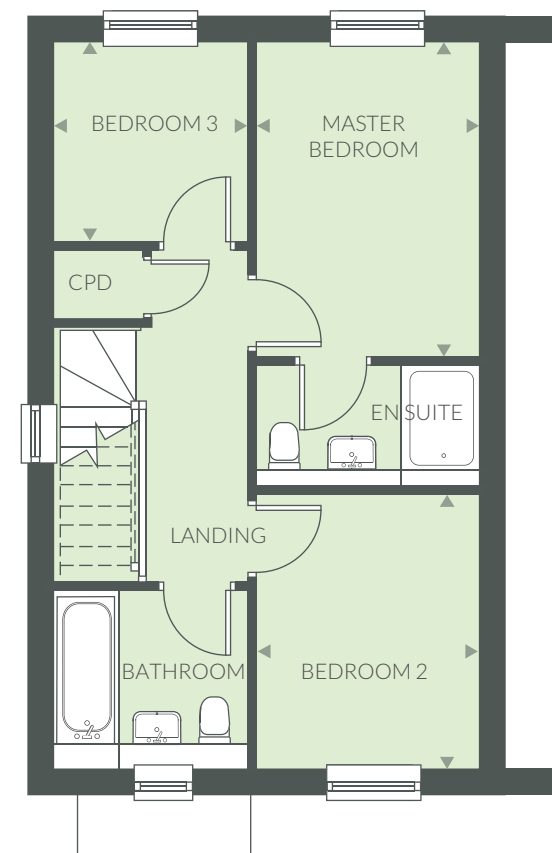
THE IRIS

A three bedroom house with parking.



GROUND FLOOR

Kitchen	4.8m x 2.9m	15'11" x 9'8"
Living Room/Dining	5.3m x 2.7m	17'5" x 8'11"



FIRST FLOOR

Master Bedroom	3.6m x 2.5m	11'9" x 8'5"
Bedroom 2	3.1m x 2.5m	10'2" x 8'5"
Bedroom 3	2.2m x 2.2m	7'4" x 7'2"

KEY: (B) Boiler CPD Cupboard

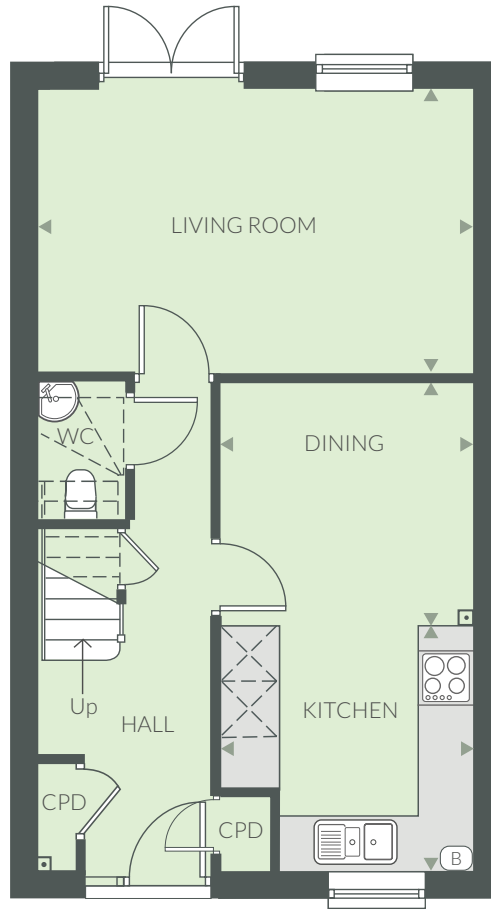
Computer generated image is not to scale. Finishes and materials may vary from those shown. Landscaping is illustrative only. Different styles of this house type may have a varied layout or larger dimensions. Please note floor plans and dimensions are taken from architectural drawings and are for guidance only, please ask to see plot-specific working drawings. Kitchen layouts are for illustrative purposes only, please ask to see separate kitchen layouts. Measurements are taken from working drawings and cover carpeted floor area only.

THE BLUEBELL



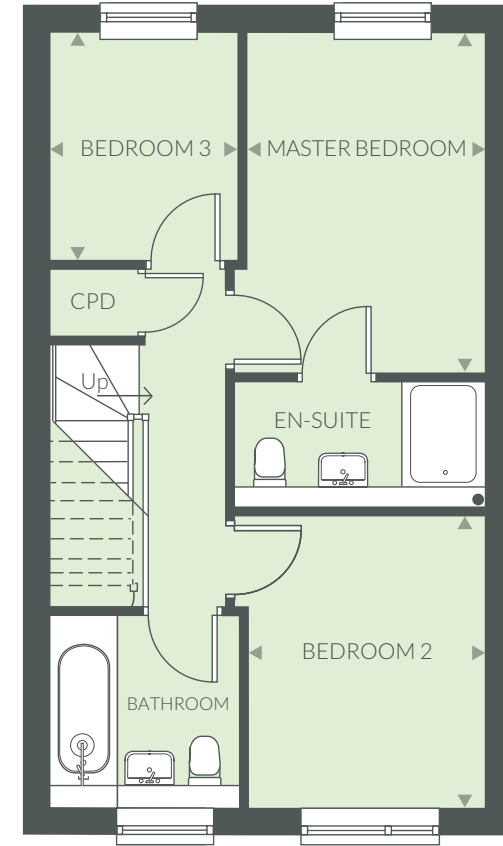
THE BLUEBELL

A three bedroom house with parking.



GROUND FLOOR

Living Room	4.9m x 3.1m	16'1" x 10'2"
Kitchen	2.8m x 2.6m	9'4" x 8'9"
Dining	2.6m x 2.4m	8'9" x 7'11"



FIRST FLOOR

Master Bedroom	3.7m x 2.6m	12'2" x 8'7"
Bedroom 2	3.2m x 2.6m	10'7" x 8'7"
Bedroom 3	2.5m x 2.2m	8'6" x 7'3"

KEY: (B) Boiler CPD Cupboard

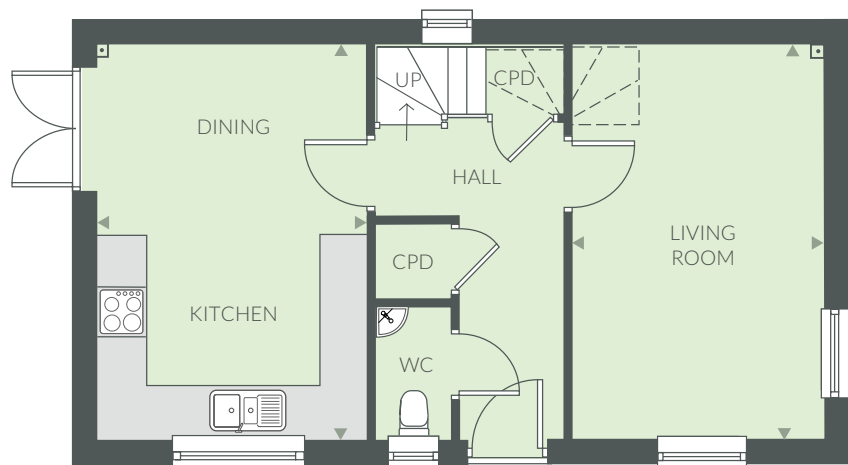
Computer generated image is not to scale. Finishes and materials may vary from those shown. Landscaping is illustrative only. Different styles of this house type may have a varied layout or larger dimensions. Please note floor plans and dimensions are taken from architectural drawings and are for guidance only, please ask to see plot-specific working drawings. Kitchen layouts are for illustrative purposes only, please ask to see separate kitchen layouts. Measurements are taken from working drawings and cover carpeted floor area only.

THE CLOVER



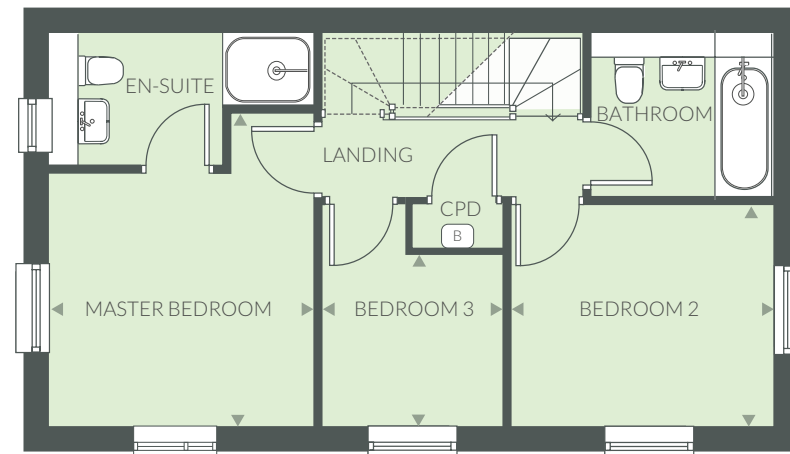
THE CLOVER

A three bedroom house with parking.



GROUND FLOOR

Kitchen/Dining/Family	4.9m x 3.3m	16'1" x 10'10"
Living Room	4.9m x 3.0m	16'1" x 10'0"



FIRST FLOOR

Master Bedroom	3.3m x 3.2m	10'11" x 10'9"
Bedroom 2	3.3m x 2.8m	10'11" x 9'2"
Bedroom 3	2.0m x 2.0m	6'9" x 6'9"

KEY: (B) Boiler CPD Cupboard

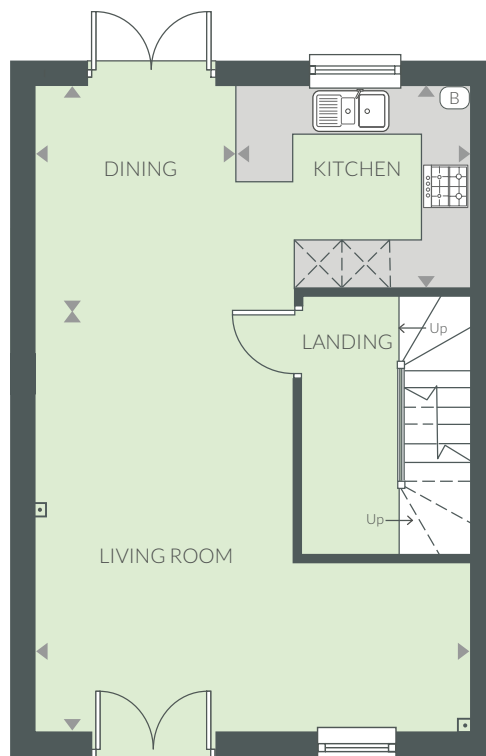
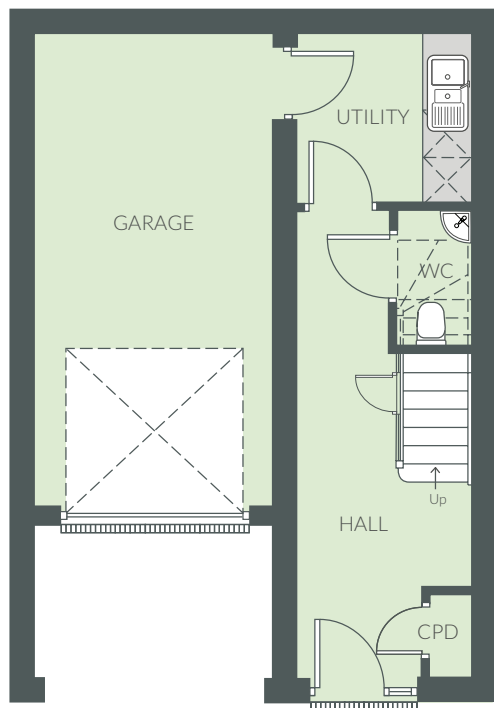
Computer generated image is not to scale. Finishes and materials may vary from those shown. Landscaping is illustrative only. Different styles of this house type may have a varied layout or larger dimensions. Please note floor plans and dimensions are taken from architectural drawings and are for guidance only, please ask to see plot-specific working drawings. Kitchen layouts are for illustrative purposes only, please ask to see separate kitchen layouts. Measurements are taken from working drawings and cover carpeted floor area only.

THE CHERRY



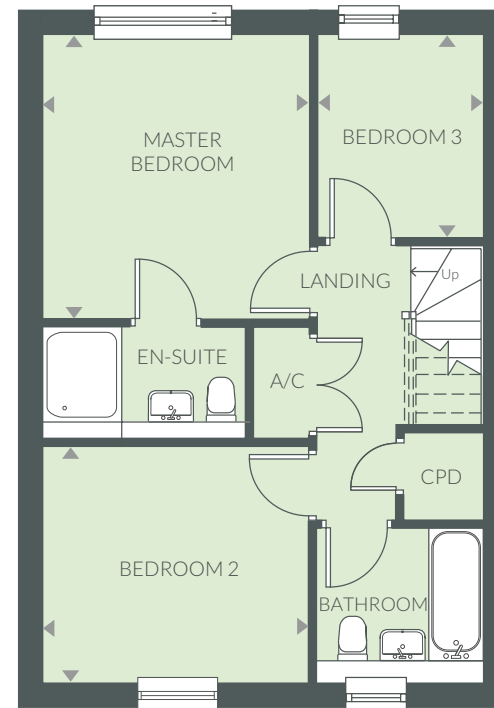
THE CHERRY

A three bedroom townhouse with parking.



FIRST FLOOR

Living Room	5.4m x 5.4m/3.2m	18'0" x 17'9"/ 10'7"
Dining	2.5m x 2.4m	8'6" x 7'11"
Kitchen	3.0m x 2.5m	19'10" x 8'6"



SECOND FLOOR

Master Bedroom	3.6m x 3.2m	12'1" x 10'7"
Bedroom 2	3.2m x 2.7m	10'7" x 9'0"
Bedroom 3	2.5m x 2.0m	8'6" x 6'10"

KEY: (B) Boiler CPD Cupboard

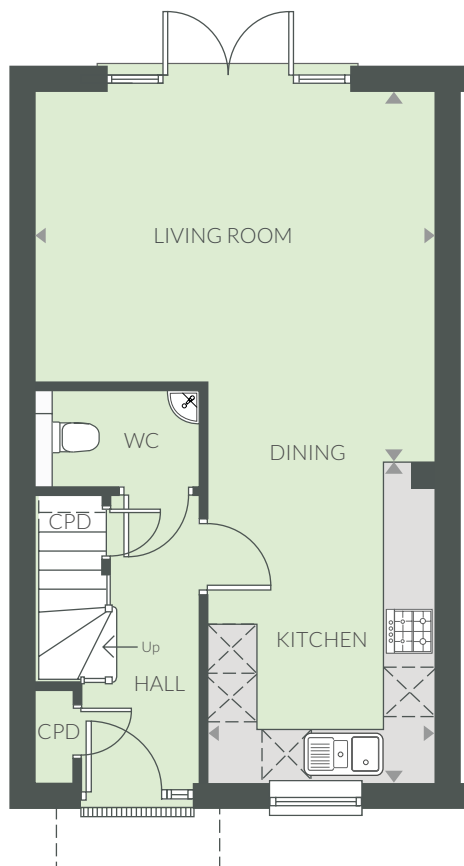
Computer generated image is not to scale. Finishes and materials may vary from those shown. Landscaping is illustrative only. Different styles of this house type may have a varied layout or larger dimensions. Please note floor plans and dimensions are taken from architectural drawings and are for guidance only, please ask to see plot-specific working drawings. Kitchen layouts are for illustrative purposes only, please ask to see separate kitchen layouts. Measurements are taken from working drawings and cover carpeted floor area only.

THE FUCHSIA



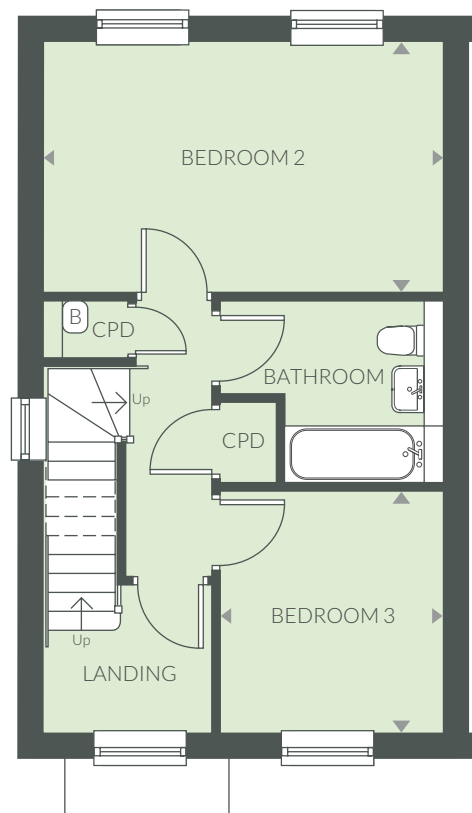
THE FUCHSIA

A three bedroom house with parking.



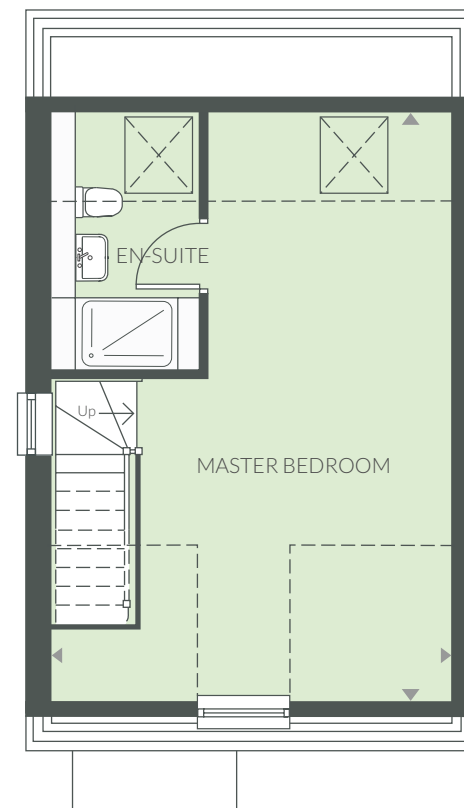
GROUND FLOOR

Living Room/Dining	4.8m x 4.4m	15'9" x 14'7"
Kitchen	3.8m x 2.7m	12'8" x 9'0"



FIRST FLOOR

Bedroom 2	4.8m x 2.9m	15'9" x 9'9"
Bedroom 3	2.8m x 2.6m	9'6" x 8'10"



SECOND FLOOR

Master Bedroom	7.1m x 4.8m	tbc
----------------	-------------	-----

KEY: (B) Boiler CPD Cupboard ----- Reduced ceiling height ☒ Roof light

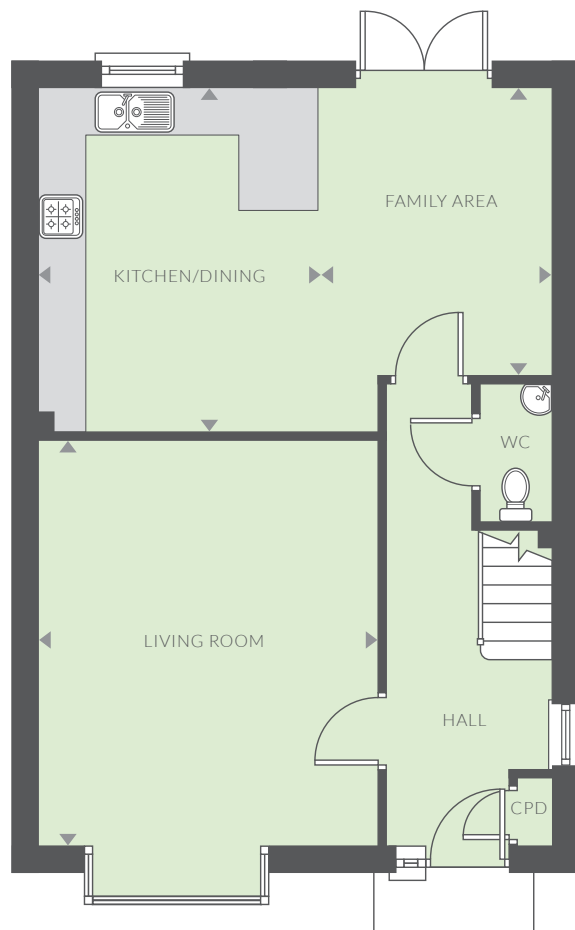
Computer generated image is not to scale. Finishes and materials may vary from those shown. Landscaping is illustrative only. Different styles of this house type may have a varied layout or larger dimensions. Please note floor plans and dimensions are taken from architectural drawings and are for guidance only, please ask to see plot-specific working drawings. Kitchen layouts are for illustrative purposes only, please ask to see separate kitchen layouts. Measurements are taken from working drawings and cover carpeted floor area only.

THE ROSEMARY



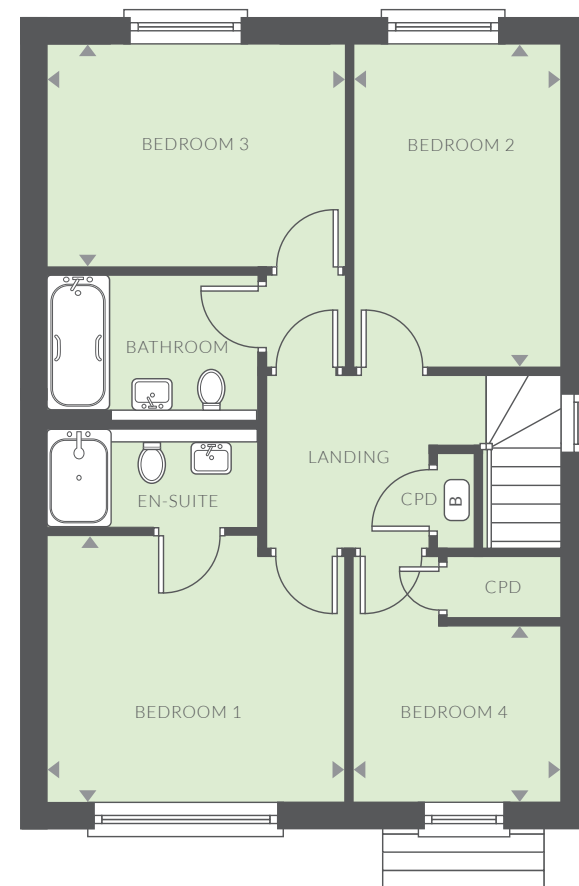
THE ROSEMARY

A four bedroom house with parking.



GROUND FLOOR

Kitchen/Dining	4.2m x 3.4m	13'11" x 11'5"
Family	3.5m x 2.8m	11'8" x 9'6"
Living Room	5.0m x 4.1m	16'6" x 13'9"



FIRST FLOOR

Master Bedroom	3.7m x 3.4m	12'2" x 11'2"
Bedroom 2	4.0m x 2.5m	13'2" x 8'6"
Bedroom 3	3.7m x 2.5m	12'2" x 8'5"
Bedroom 4	2.5m x 2.4m	8'6" x 8'0"

KEY: **B** Boiler **CPD** Cupboard

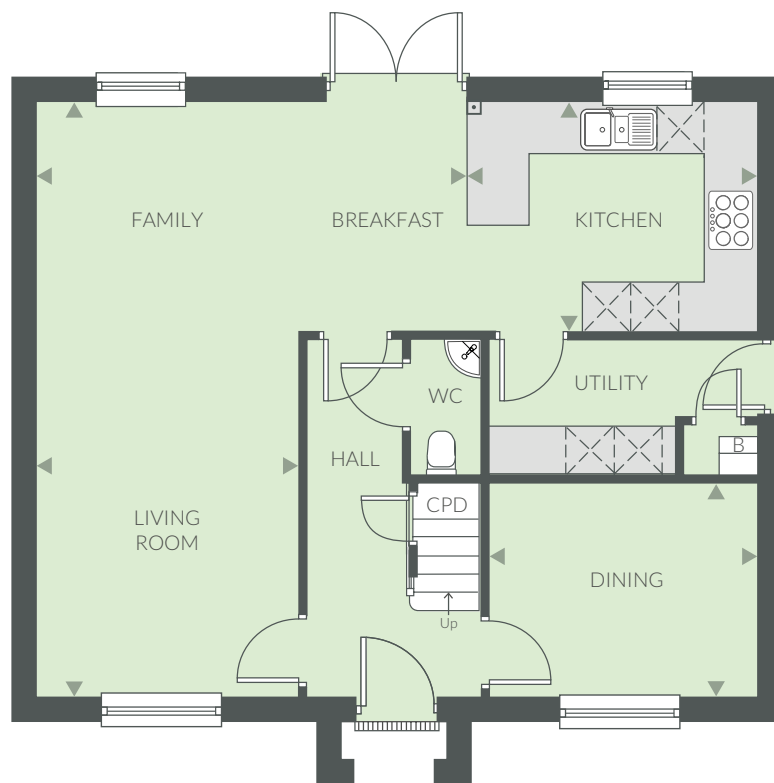
Computer generated image is not to scale. Finishes and materials may vary from those shown. Landscaping is illustrative only. Different styles of this house type may have a varied layout or larger dimensions. Please note floor plans and dimensions are taken from architectural drawings and are for guidance only, please ask to see plot-specific working drawings. Kitchen layouts are for illustrative purposes only, please ask to see separate kitchen layouts. Measurements are taken from working drawings and cover carpeted floor area only.

THE ELDERFLOWER



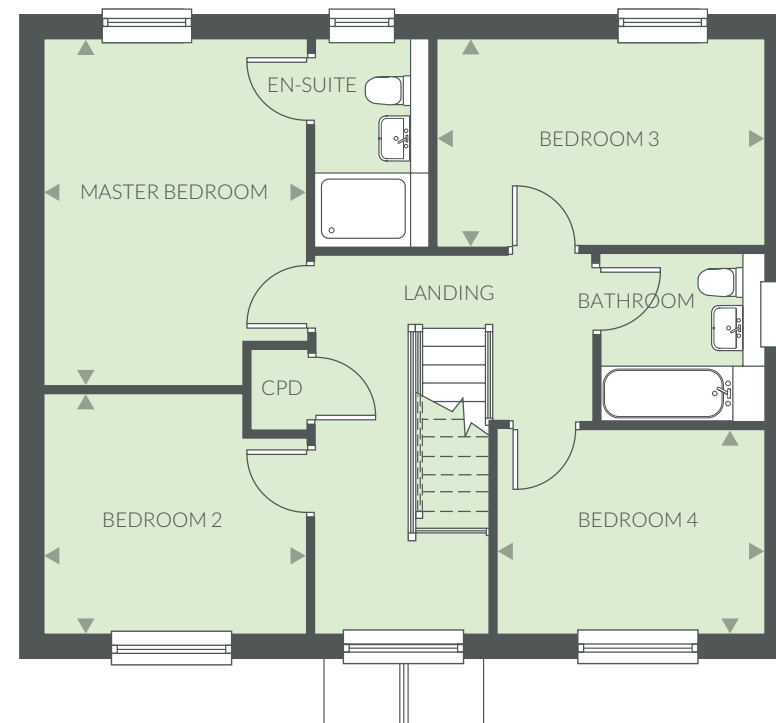
THE ELDERFLOWER

A four bedroom house with parking.



GROUND FLOOR

Kitchen	3.6m x 2.8m	11'10" x 9'9"
Living Room/Family/Breakfast	7.3m x 5.3m (3.2m)	24'3" x 17'7"
Dining	3.3m x 2.6m	10'10" x 8'9"



FIRST FLOOR

Master Bedroom	4.3m x 3.2m	14'1" x 10'9"
Bedroom 2	3.2m x 3.0m	10'9" x 9'10"
Bedroom 3	4.0m x 2.5m	13'4" x 8'4"
Bedroom 4	3.3m x 2.5m	10'10" x 8'4"

KEY: (B) Boiler CPD Cupboard

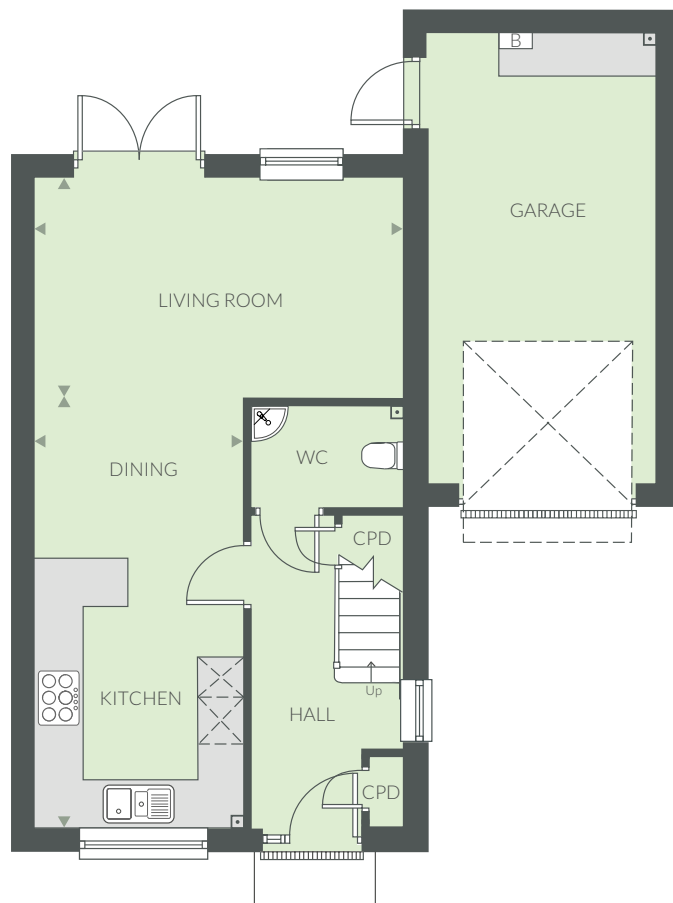
Computer generated image is not to scale. Finishes and materials may vary from those shown. Landscaping is illustrative only. Different styles of this house type may have a varied layout or larger dimensions. Please note floor plans and dimensions are taken from architectural drawings and are for guidance only, please ask to see plot-specific working drawings. Kitchen layouts are for illustrative purposes only, please ask to see separate kitchen layouts. Measurements are taken from working drawings and cover carpeted floor area only.

THE ASH



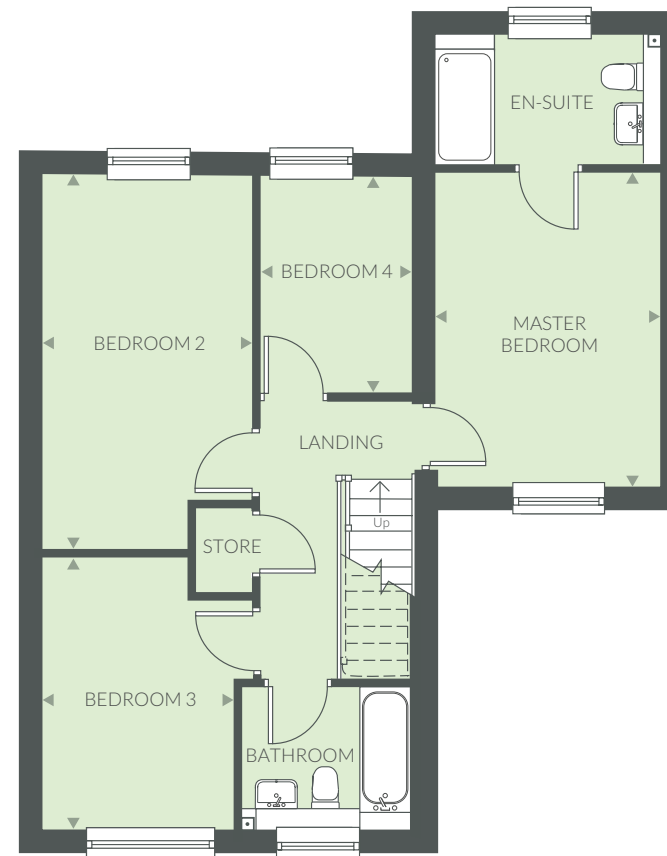
THE ASH

A four bedroom house with parking.



GROUND FLOOR

Kitchen/Dining	5.8m x 2.7m	19'0" x 9'0"
Living Room	4.9m x 2.9m	16'1" x 9'7"



FIRST FLOOR

Master Bedroom	4.2m x 3.0m	14'0" x 9'10"
Bedroom 2	5.0m x 2.7m	16'5" x 9'2"
Bedroom 3	3.6m x 2.5m	11'10" x 8'4"
Bedroom 4	2.9m x 2.0m	9'6" x 6'8"

KEY: (B) Boiler CPD Cupboard

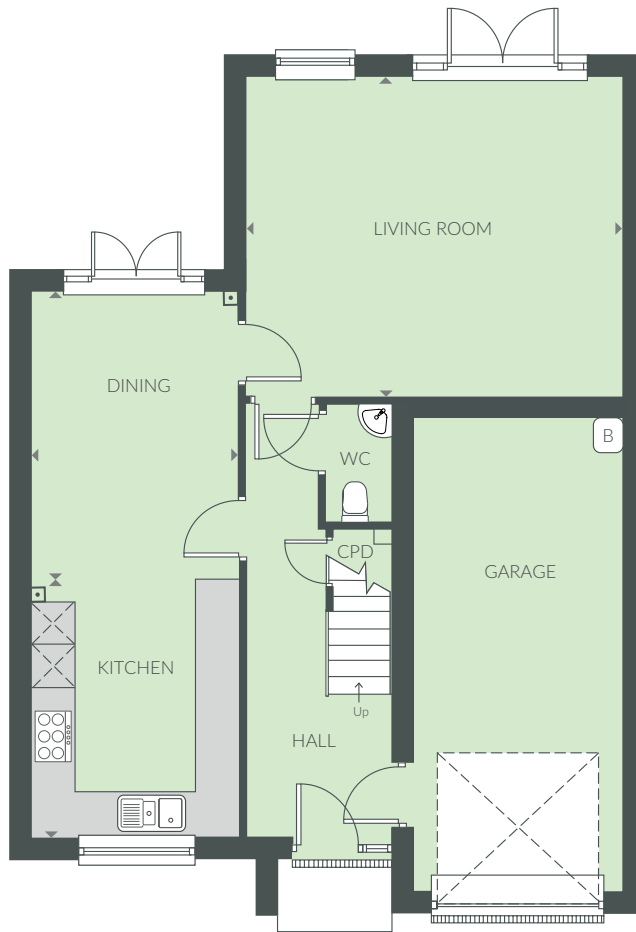
Computer generated image is not to scale. Finishes and materials may vary from those shown. Landscaping is illustrative only. Different styles of this house type may have a varied layout or larger dimensions. Please note floor plans and dimensions are taken from architectural drawings and are for guidance only, please ask to see plot-specific working drawings. Kitchen layouts are for illustrative purposes only, please ask to see separate kitchen layouts. Measurements are taken from working drawings and cover carpeted floor area only.

THE SAFFRON



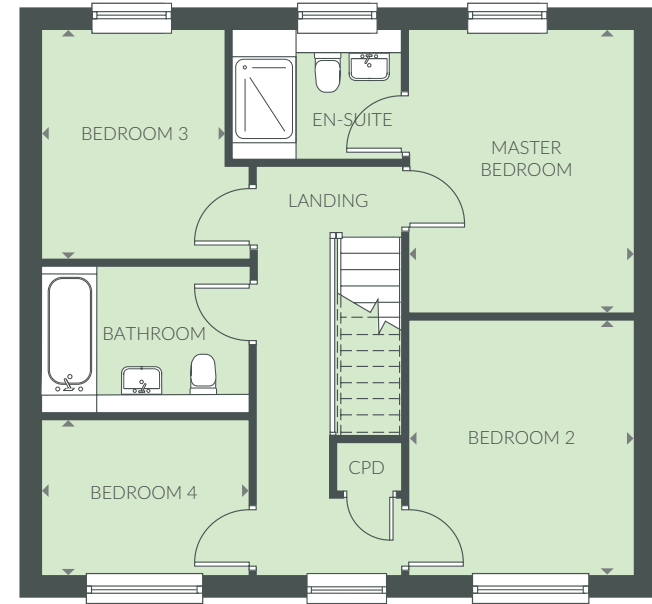
THE SAFFRON

A four bedroom house with parking.



GROUND FLOOR

Kitchen	3.6m x 2.8m	11'10" x 9'5"
Dining	4.0m x 2.8m	13'2" x 9'5"
Living Room	5.2m x 4.4m	17'3" x 14'6"



FIRST FLOOR

Master Bedroom	3.9m x 3.1m	12'11" x 10'4"
Bedroom 2	3.5m x 3.1m	11'8" x 10'4"
Bedroom 3	3.2m x 2.5m	10'6" x 8'5"
Bedroom 4	2.9m x 2.1m	9'7" x 7'2"

KEY: (B) Boiler CPD Cupboard

Computer generated image is not to scale. Finishes and materials may vary from those shown. Landscaping is illustrative only. Different styles of this house type may have a varied layout or larger dimensions. Please note floor plans and dimensions are taken from architectural drawings and are for guidance only, please ask to see plot-specific working drawings. Kitchen layouts are for illustrative purposes only, please ask to see separate kitchen layouts. Measurements are taken from working drawings and cover carpeted floor area only.



THE ARRANGEMENT OF HOMES

Phase 3 & 5
Site Layout



- THE BAILEY
2 BEDROOM HOME
Homes 224, 225, 226 & 227
- THE BLUEBELL
3 BEDROOM HOME
Homes 122, 123, 204, 205, 209, 210, 240 & 241
- THE CLOVER
3 BEDROOM HOME
Homes 151, 152, 171, 198, 199, 206, 230, 239 & 246
- THE ANGELINA
3 BEDROOM HOME
Homes 196, 197, 200, 201, 202 & 203
- THE ROSEMARY
4 BEDROOM HOME
Homes 130, 141, 142, 145, 146, 207, 208 & 231
- THE JASMINE
3 BEDROOM HOME
Home 213
- THE ELM
2 BEDROOM HOME
Homes 149, 150, 235, 236, 237, 238, 248, 252 & 253
- THE WILLOW
4 BEDROOM HOME
Homes 167, 168, 169, 170, 172, 173, 174 & 175
- THE HAZEL
3 BEDROOM HOME
Homes 211, 212, 261, 262 & 263
- THE IRIS
3 BEDROOM HOME
Homes 147, 148, 247, 249, 254, 255, 256 & 257
- THE SAFFRON
4 BEDROOM HOME
Homes 125, 126, 127, 129, 242, 243 & 304
- THE VIOLET
5 BEDROOM HOME
Homes 244, 245 & 303
- THE ROSE
4 BEDROOM HOME
Home 258
- THE FAWN
4 BEDROOM HOME
Homes 259 & 260
- THE CARAWAY
2 BEDROOM HOME
Home 179
- THE LILAC
5 BEDROOM HOME
Home 138 & 139, 301, 302
- THE CHERRY
3 BEDROOM HOME
Home 92, 93, 94, 95, 105, 106, 107, 108, 109, 110, 305, 306, 307 & 308
- THE ELDERFLOWER
4 BEDROOM HOME
Home 131 & 140
- THE FUCHSIA
3 BEDROOM HOME
Home 143, 144, 250 & 251
- THE ASH
4 BEDROOM HOME
Home 124 & 128
- THE MARIGOLD
2 BEDROOM APARTMENTS
Homes 176, 177, 178, 179, 180, 181, 182, 183, 184 & 185
- REGISTERED PROVIDER
 - FRONT DOOR
 - GARAGE ENTRANCE
 - DRIVE THROUGH
 - GRADIENT
 - STEPS

Not to scale. Trees and landscaping are indicative only and may alter during construction. The trees, shrubs and gardens shown are illustrative only. Finishes and materials may vary from those shown here. Please ask your Sales Executive for specific details and working drawings.

Hayne Farm, Hayne Lane, Gittisham, Honiton EX14 3PD

FOR MORE INFORMATION CONTACT

haynefarm@bakerestatesltd.co.uk

01626 241 404

www.bakerestatesltd.co.uk

