



stags.co.uk

01769 572042

Agricultural Sales

auctions@stags.co.uk

### STAGS REPORT

The tables turned this week as the prime lamb numbers leap as well as the SQQ whilst the hogg numbers nearly half on the week!

### STAFF WANTED

We require staff to help at South Molton Market every Thursday  
Tasks include:  
picking & penning lambs/hoggs/ewes, scanning tags and general help in running the weekly auction  
Hours vary during peak times:  
7am - 3pm (approx)  
For further information contact Chris or Jess

### \*\*IMPORTANT\*\* EAR TAGS

Please ensure when bringing sheep to market they all have at least a single EID (electronic) tag in their ears!

FOR UP TO DATE PRICES, TRADE OR TO BOOK YOUR STOCK IN CONTACT:  
Chris Clapham  
07968 122198  
Harvey Pile  
07738 116669  
Jess Maynard  
07772 573835

### SOUTH MOLTON LIVESTOCK MARKET REPORT

THURSDAY 5TH MAY 2022

1740 SHEEP SOLD

812 SPRING LAMBS, 528 PRIME HOGGS & 400 CULL EWES & RAMS

#### 812 PRIME LAMBS

Another bigger entry this week and overall a really decent run of fresh lambs. Also a little less weight on offer so more lambs that more buyers are looking for. Trade dearer than last week with more buyers wanting the lambs. As more lambs come forward and the hoggs dry up the trade should remain firm for a few weeks. Best trade this week for the 41-44kg lambs although very noticeable that the heavier lambs were much more wanted this week. **A fantastic £149 achieved for a pair of 45kg Texel crosses from MJ King & Sons of Iddesleigh**, with 4 pens to £144; 52kg Charollais from DJ Govier & Partners, Chulmleigh; 46kg Texels from MJ King & Sons; 47kg Dorsets again from DJ Govier & Partners and 57kg Suffolk from WJ Woollacott & Sons, South Molton. 2 pens to £139; firstly Dorsets from Bonners Farm, Burrington and from EJ Westaway, Newton Tracey for 45kg Charollais. **Top shout of 338ppk today for 39.2kg Charollais from GE & EJ Nicholls, West Anstey**, whilst 38kg Texels from IFJ & JC Harris, Beaworthy met 335ppk. Also to 335ppk was 38.7kg Charollais from G Palfrey & Son, Stoodleigh. 2 pens to 333ppk, firstly 38.7kg Charollais from FG & FM Saunders, Templeton, and then for 40kg Charollais from GJ & SM Down, High Bickington. A pen of 40.3kg Texels met a rewarding 332ppk for PJ & BJ Millman, Chulmleigh, and 4 pens to 331ppk; 45kg Texels from MJ King & Sons, 41kg & 40.7kg Charollais pens from G Mills & Partners Ltd, Witheridge, who again had another super run over of 200 lambs today, and 41kg Texels from JF Norman, Barnstaple.

#### 527 PRIME HOGGS

Less numbers forward this week which is expected at this time of year. Still plenty of heavy hoggs on offer and few handy weight hoggs on offer. Trade dearer for all weights but in particular the heavier hoggs. Plenty of buyers wanting the hoggs but this is likely to change as abattoirs change over to the lambs. More and more scaled hoggs are coming forward with most being sold around £10-£15 less than if having clean teeth. **A top call of £155 for 82kg Charollais from MTD Pile, Dunkeswell**, with 72kg Texels from AC Westaway, Newton Tracy to £152. 62kg Texels from EJ Westaway, Newton Tracey to £141.80 with 68kg

Texels from WJ Crocker & Sons, Merton to £141.20. DEJ Nott, Kennerleigh sold a 62kg Texel for £139.50 followed by 60.6kg Suffolks from EJ Westaway met with £138.80. 61.5kg Texels from WJ Crocker & Sons again to £138.20. 3 pens to £138, firstly from IFJ & JC Harris, Beaworthy for 57kg Texels, then for 59.8kg Suffolks from the same home, and for 55kg Texels from Irwin & Sons, Mariansleigh. **A pen of 42kg Texels from A & P Tapp, Heasley Mill topped at 295ppk**. A single 44kg Blue Texel from MJ King & Sons met 294ppk. An impressive 286ppk for a 40kg Welsh Hogg from SJ Dallyn, Barnstaple, with 42.5kg Texels from RJ & MS Radford, Mariansleigh to 285ppk. 2 pens to 283ppk, firstly for 40kg Easy Cares from GE & EJ Nicholls, West Anstey, and then for 40kg Texels from DEJ Nott, Crediton. 44.6kg Texels from S & J Bale, Challacombe to 282ppk. A pen of 10 Texel X From Beer Bros, Warkleigh met with 281ppk for 46kg.

#### 400 CULL EWES & RAMS

Less numbers forward this week which was expected after the last fortnights large entries. Trade was expected to be less following the end of the Ramadan festival, however, trade was no less at all. All ewes were very wanted and all buyers were very much in attendance and wanting ewes. Best trade for the big continental ewes which appear to just get dearer and dearer. Also very dear on the day were the well framed 3/4 meat ewes. Lots of pens sold over to £140 mark and the overall average of £121 included some runs of hill bred and small ewes. Best Suffolk Mules were all £150 plus and best mules well over the £125 mark. **A staggering £206 for a shapely Texel ewe from AJ & MJ Tarr & Son, West Anstey**, with a pair of Texels from MJ King & Sons, Iddesleigh to £198. Texels again from AJ Dart, Chulmleigh to £183; £179.50 from JE & M Mather & Son, Arlington & £170 from D Fergie, Ash Mill. A pen of 12 Suffolks from WJ Woollacott & Sons, South Molton met with £165.50. Texels from AJ & MJ Tarr again to £160, with Texel crosses from RO & MM Allin & Son, Beaford to £159.50. Another Texel from JE & M Mather & Son to £158. 3 pens to £156; Texel crosses from G Mills & Partners Ltd, Witheridge, Suffolks from A & S Hoskin, Bishops Nympton and Texels from MJ King & Sons. **Cull Rams topped at £170 for a Charollais from WJ Thorne & Son, Ashreigney**, with 2 Suffolk Rams from M Tapp, South Molton to £147.50.

| HOGGS            | SOLD | AVE     | TOP           | AVE     | TOP     |
|------------------|------|---------|---------------|---------|---------|
|                  |      | Pence   | Per kg        | £ per   | head    |
| STANDARD 32-39   | 23   | 253.43  | 274.00        | £97.13  | £105.50 |
| MEDIUM 39.1-45.5 | 87   | 271.78  | 295.00        | £113.21 | £129.50 |
| HEAVY 45.6-52    | 207  | 267.06  | 281.00        | £130.29 | £135.50 |
| HEAVY + 52+      | 156  | 233.65  | 282.00        | £120.01 | £155.00 |
| SQQ              | 110  | Between | 32 and 45.5kg |         | 268.19  |

| CULL SHEEP            | SOLD | AVE     | TOP     |
|-----------------------|------|---------|---------|
| ALL CULL & DRAFT EWES | 382  | £120.97 | £206.00 |
| 1ST QUALITY EWES      | 196  | £139.02 | £206.00 |
| MULE EWES             | 102  | £111.65 | £142.50 |
| 2ND/3RD QUALITY EWES  | 84   | £92.14  | £108.00 |
| CULL RAMS             | 17   | £113.09 | £170.00 |



stags.co.uk

01769 572042

Agricultural Sales

auctions@stags.co.uk

**COMING SOON!!**

THE DISPERSAL SALE OF **3** TRACTORS, TRAILERS, FARM MACHINERY,  
LIVESTOCK, WORKSHOP & GENERAL EQUIPMENT

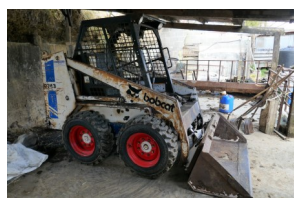
On behalf of Mr A Strickland (ALL LOTS NOT INCLUSIVE OF VAT)  
**TO BE SOLD BY ONLINE TIMED AUCTION**

**RUNNING FROM: FRIDAY 6TH UNTIL MONDAY 16TH MAY**

**LOCATION: HAWSBIT FARM, BRADFORD ON TONE, TAUNTON, TA4 1HR**

**VIEWING DAY: FRIDAY 13TH MAY (10AM – 4PM)** **COLLECTION DAY: FRIDAY 20TH MAY (9AM – 4PM)**

**TRACTORS:** 2002 New Holland TS115 4WD Tractor c/w Quicke Q970 Loader; 1954 Fordson Major Diesel 2wd Tractor; Massey Ferguson 35 2wd Tractor; **TRAILERS:** 2015 Marshall 4T Single Axle Tipping Trailer; Ifor Williams 12' TA510G Twin Axle Livestock Trailer (c/w Sheep Decks); Indespension 8'6" x 5'4" Twin Axle Flat Bed Trailer; 10' x 6' Single Axle Tipping Trailer; 12' x 7'5" Single Axle Bale Trailer; 11' x 4'9" Single Axle Flatbed Trailer; 15' Homemade Cattle Feed Trailer **MACHINERY:** 1997 Lely Optimo 280C Mower Conditioner; New Holland 370 Hayliner Conventional Baler; Cooks Flat 8 Bale Accumulator; PZ Haybob; 2009 Teagle 4 Pasture Topper; 9' Topper; Tomlin 10' Folding Drag Harrows; Twose 10' SR10 Ballast Roller; 2008 JPC R40 4' Ballast Roller; Ferguson 5' Spring Tyne Cultivator; **ATTACHMENTS:** Metal-Fach Pallet Forks; 4' Muck Fork; 5' Front Tractor Bucket; Ferguson Earth Scoop; **LIVESTOCK EQUIPMENT:** Cattle Round Bale Feeder; Round Bale Cradle; 3 Cattle Beef Troughs; Rubber 6' Ground Trough; 2 Ground Feed Troughs; 7 x 6' Sheep Hurdles; 3 Water Troughs; Milkbar Calf Feeders; **WORKSHOP & GENERAL EQUIPMENT:** 1920's Lister Petrol Stationary Engine; Karcher Professional HDS 6/12C Steam Cleaner; Generator; Snap On Pro Mig 185 Welder; Stihl MS170 Chainsaw; Stihl FS40 Strimmer; Stihl BG85 Leaf Blower; Stihl FS85R Telescopic Hedgetrimmer; Gas Flame Thrower; Fordson Major spares; IBC Tank Wooden; 12' Field Gate; 6 Rolls of Baler Cord; Qty Gate Furniture; RSJ; New PTO Shaft; 8' Solid Tow Bar; Car Inspection Ramps; Garden Roller; 3 Electric Fence Units; Wooden Fence Posts & Electric Fence Wire; Armoured Cable; Lorry Tarpaulin; Equestrian Wheelbarrow; Garden Tools; Garden Bench; Transformer; Bench Vices; Qty Workshop Power & Hand Tools and other lots



**COMING SOON!!**

THE DISPERSAL SALE OF **9** TRACTORS, SKID STEER, QUAD BIKE,  
TRAILERS, FARM MACHINERY, LIVESTOCK & GENERAL EQUIPMENT

On behalf of Mr P Chisholm (the auctioneers having sold the farm)

**TO BE SOLD BY ONLINE TIMED AUCTION**

**RUNNING FROM: MONDAY 16TH UNTIL TUESDAY 24TH MAY**

**LOCATION: LANGABEARE BARTON, HATHERLEIGH, EX20 3LW**

**VIEWING DAY: MONDAY 23RD MAY (10.00AM – 5.00PM)** **COLLECTION DAYS: FRIDAY 27TH MAY 2022 & WEDNESDAY 1ST JUNE**

**TRACTORS, SKID STEER AND QUAD BIKE:** 2009 Massey Ferguson 5445 4WD Tractor c/w MF 935 Loader; 1996 Massey Ferguson 6180 4WD Tractor; International 885XL 4WD Tractor; 1976 Deutz D6806 2WD Tractor; 1981 Deutz D6807 Synchron 2WD Tractor; 1974 Massey Ferguson 185 Tractor; Massey Ferguson 35 TVO Tractor; 1963 Fordson Super Dexta Tractor; International B414 2WD Tractor; Bobcat 743 Skid Steer c/w Front Bucket (2,048 Hours on clock); Honda TRX 420 Fourtrax Quad Bike **TRAILERS:** Ifor Williams 12' Twin Axle Livestock Trailer c/w Sheep Decks; 16' Single Axle Bale Trailer; 15' Single Axle Bale Trailer; Logic ATV Trailer; **FARM MACHINERY:** Claas Disco 2650C Plus Mower Conditioner; Krone 6 Star 6.70/6 Tedder; Spearhead Q2500 Flail Topper; PZ Strela 300 Haybob; Browns Flat 8 Bale Accumulator; 2000 RMH VR10 Mixer Feeder Wagon; Alfa Laval 1100 Gallon Slurry Tanker; Vicon Varispreader PS604 Fertilizer Spreader; Kverneland KD825 Straw Chopper; 10' Ballast Roller; Malgar 20' Slurry Stirrer; Massey Ferguson 10' Disc Harrows; Parmiter Post Rammer; IAE Yardscraper; Twose Link Box; Richard Western Silage Feeder (S/R); Major 9' Topper (S/R); PZ 185 6' Mower (S/R); **ATTACHMENTS:** Mailleux 1.5M Muck Grab; McHale Bale Squeeze; 2M Front Tractor Bucket; Tanco Over The Top Bale Squeeze; Twose Push Off Buckrake; Massey Ferguson 80 Loader; Loader to fit Dexta Tractor & Muck Grab; Parmiter Shear Grab; 70" Front Tractor Bucket; Rear Bale Spike; Set of Cage Wheels **LIVESTOCK & GENERAL EQUIPMENT:** Bateman Ambassador Cattle Clipping Crush; Cattle Hurdles; Cosnet Cattle/Sheep Creep Feeder; MVF Cattle Crush; Galvanised Cattle Round Feeder; 4 IAE Sheep Feed Barriers; Sheep Walk Through Feeders; Bentall 3 Phase Roller Mill; Scotmec Vertical Mill & Mix; 2 Wooden Cake Feed Bins; 20 Ton Aluminium Feed Bin (Dismantled); Crop Blowing Fan; Wacker Plate; JAP Engine Alcon Water Pump; Landmaster Rotavator; Villiers Engine; Avery Barn Scales; Wooden Fence Posts; Water Troughs; Hydraulic Top Link



Full details of all lots including photos and videos will be available in due course on our website: <https://machineryauctions.stags.co.uk/>

To make enquiries and for all further information please contact a member of the team





stags.co.uk

Agricultural Sales

01769 572042

auctions@stags.co.uk

SOUTH MOLTON MARKET

Office Tel: 01769 572042

Email: auctions@stags.co.uk

Chris Clapham 07968 122198 Harvey Pile 07738 116669 Jess Maynard 07772 573835

**THURSDAY 12TH MAY - NEW DATE!!!**

SHOW TO COMMENCE AT 9:00AM PROMPT & SALE TO COMMENCE AT 10:00AM PROMPT

**North Devon Group of Young Farmers Show & Sale of**

**80**

**Couples**

To include: 80 x Texel Mule, Suffolk Mules & North Country Mule Flock Age ewes with 150 mainly Texel, Suffolk, Charollais & Berrichon sired lambs at foot (January—March born)

FOR FURTHER INFORMATION CONTACT HARVEY PILE

FORTHCOMING ONLINE SALES

Office Tel: 01769 572042

Email: auctions@stags.co.uk

Chris Clapham 07968 122198 Harvey Pile 07738 116669 Jess Maynard 07772 573835

**NOW LIVE!!**

THE SALE OF **4** TRACTORS, QUAD BIKE, TRAILERS, FARM MACHINERY, LIVESTOCK & GENERAL EQUIPMENT

**TO BE SOLD BY ONLINE TIMED AUCTION**

**CLOSING SOON— SUNDAY 8<sup>TH</sup> MAY**

LOCATION: PATCHOLE MANOR COTTAGE, KENTISBURY, BARNSTAPLE, EX31 4NB

*On behalf of Messrs M R Barrow (changing farming policy)*

**VIEWING DAY:** FRIDAY 6<sup>TH</sup> MAY (10AM—5PM)

**COLLECTION DAY :** FRIDAY 13<sup>TH</sup> MAY (9AM-5PM)

**ITEMS INCLUDE:** **TRACTORS:** 2006 John Deere 6290S 4WD Tractor; 2004 Massey Ferguson 2210 4WD Tractor c/w 2012 Massey Ferguson 921 Loader; 1986 Ford 5610 2WD Tractor c/w Quicke 2300 Loader; 1982 Massey Ferguson 565 2WD Tractor; **ATV'S:** 2011 Suzuki Eiger 400 4X4 Quad Runner Quad Bike; 2014 Honda 250cc Fourtrax ES 2WD Quad Bike; **TRAILERS:** 1997 Richard Western 12T Grain & Silage Trailer; 24' Twin Axle Bale Trailer; 2002 Gull 25' Twin Axle Bale Trailer; Griffiths 6T Single Axle Grain Trailer; 14' Single Tandem Axle Trailer; 1980 Weeks 12' Twin Axle Tipping Trailer; Nugent Single Axle Trailer; Buffalo Stock Single Axle Trailer; **FARM MACHINERY:** Protech P300 Post Rammer; 2006 McHale F550 Chopper Round Baler; 2010 Teagle 5X4000 Centerliner Twin Disc Fertiliser Spreader; Conor Self Loading Bale Wrapper; 2001 Vicon Haybob 300; 2008 Lely Splendino 240LC Mower Conditioner; Vicon CM2400 Mower; Vicon CM188 Drum Mower; Zweegers PZ Haybob; GP-Engineering 8' Topper (S/R); 2006 Major Offset 900 SM 9' Topper; Major Topper; Kverneland VD85 4 Furrow Reversible Plough; 1997 Greenland 3M 300-60 Power Harrow C/w Crumbler; 8' Ballast Roller; Dowdeswell 6' Front Press; 16' Folding Drag Harrows; Set Of 10' Folding Drag Harrows; Vicon Wagtail Fertiliser Spreader; Hardi Crop Sprayer (S/R) **ATTACHMENTS:** Galvanised 'A' Frame Concrete Tractor Weight; Tractor 'A' Frame C/w Pick Up Hitch; 'Over The Top' Bale Squeeze; 5' Muck Grab; Single Bale Spike; Rear Double Bale Spike; Tanco Rear Single Bale Spike; 20' Single Axle Trailer Chassis; Rear Double Bale Spike; Rear Double Bale Spike; Rear Bale Spike; Single Bale Spike; Alo 6' Front Tractor Bucket; Grays Front Loader; Langaton Galvanised Link Box; Aluminium Pick Up Canopy **LIVESTOCK EQUIPMENT:** Galvanised 30' Sheep Race; Bateman Lamb Weigher; 2 Galvanised Sheeted Hurdles; IAE 8' Mobile Double Sided Sheep Hay Feeder; MVF 8' Mobile Double Sided Sheep Hay Feeder; IAE 8' Mobile Double Sided Lamb Creep Feeder; 9' IAE Galvanised Ground Feeder Troughs; 9' Galvanised Ground Feed Troughs; 2' Galvanised Ground Feed Trough; 4 ½ Galvanised Ground Feed Trough; Galvanised Sheep Round Feeders; 1 ½ Lamb Adoption Pens; 8' Mobile Sheep Hayrack; Qty Of Sheep Hurdles; **MISCELLANEOUS:** 4 Lengths Of Timber; Qty Tongue & Groove Timber; **WHEELS & TYRES:** Pirelli 650/65 R38 Tractor Tyre







stags.co.uk

Agricultural Sales

01769 572042

auctions@stags.co.uk

### Taw Valley

67.01 Acres (27.11 Hectares)

A range of traditional and modern buildings with productive pasture land and meadows, in the picturesque Taw Valley. Available as a whole or in four lots. Good access to the A377. Fine views along and over the valley. For sale by private treaty.

Guide Price £555,000

South Molton 01769 572263



### Knowstone

26.31 Acres (10.65 Hectares)

Pasture and improvable grazing land with two agricultural buildings adjoining the Crooked Oak stream. Direct road access. Open-fronted building and a Pole Barn. Mains water and electricity on site. Within walking distance of Knowstone. Views out towards Exmoor. For sale by private treaty.

Guide Price £175,000

South Molton 01769 572263



### Taw Valley

9.42 Acres (3.81 Hectares)

A single grass field overlooking the picturesque Taw Valley. Direct road access. Used for agricultural purposes. For sale by private treaty. Additional land lots available.

Guide price £60,000

South Molton 01769 572263



### Loxbeare, Tiverton

0.22 Acres (0.09 Hectares)

A stone barn used for agricultural storage purposes. Enclosed building measuring approximately 7.60m x 4.56m constructed of stone and block with a corrugated tin roof. Small area of outside space / verge. For sale by traditional online auction (unless sold prior).

Auction Guide £25,000 to £50,000

Tiverton 01884 235705

