

LOCAL AREA GUIDE

Eggborough and Surrounding Villages



History | Property & Demographics | Schools | Things to Do |
Shopping & Leisure | Travel Connections



Small, but with a feeling of space and peace

Eggborough is an appealing village in the Selby district of North Yorkshire. It's located to the south of Selby, around 20 miles east of Leeds and the same distance south of York. Around 2,000 people currently call Eggborough home, but the village is surprisingly well equipped and well provisioned, considering its diminutive size.

Until recently, the post-1960 history of Eggborough was dominated by its power station and mining industry, but now, it's an altogether different place. Small but with a feeling of space and peace, Eggborough is a location for people seeking somewhere comfortable to live that's conveniently close to the area's larger towns and cities. Transport options here are plentiful with great motorway access as well as many bus links.

For families with kids, there are reputable schools nearby. There is also the ubiquitous pub and village store here and residents can enjoy easy access to the area's waterways, which provide opportunities for fishing and boating.

*"On a clear day,
Eggborough Power Station
can be seen from as far
away as Todmorden
in West Yorkshire."*

Eggborough and Surrounding Villages

Eggborough was mentioned in the Domesday Book and was originally classed as being in the Wapentake of Osgoldcross. From 1894-1974, it was situated in the West Riding of Yorkshire, but in 1974 it transferred over to the Selby District of North Yorkshire.

The canal running through the village is part of the Aire and Calder Navigation and was important in the transport of goods from the West Riding to the port of Goole. Historically, the main industry in Eggborough was agriculture, but the village has also seen a flour mill and more recently an insulation boarding factory and a glass factory.

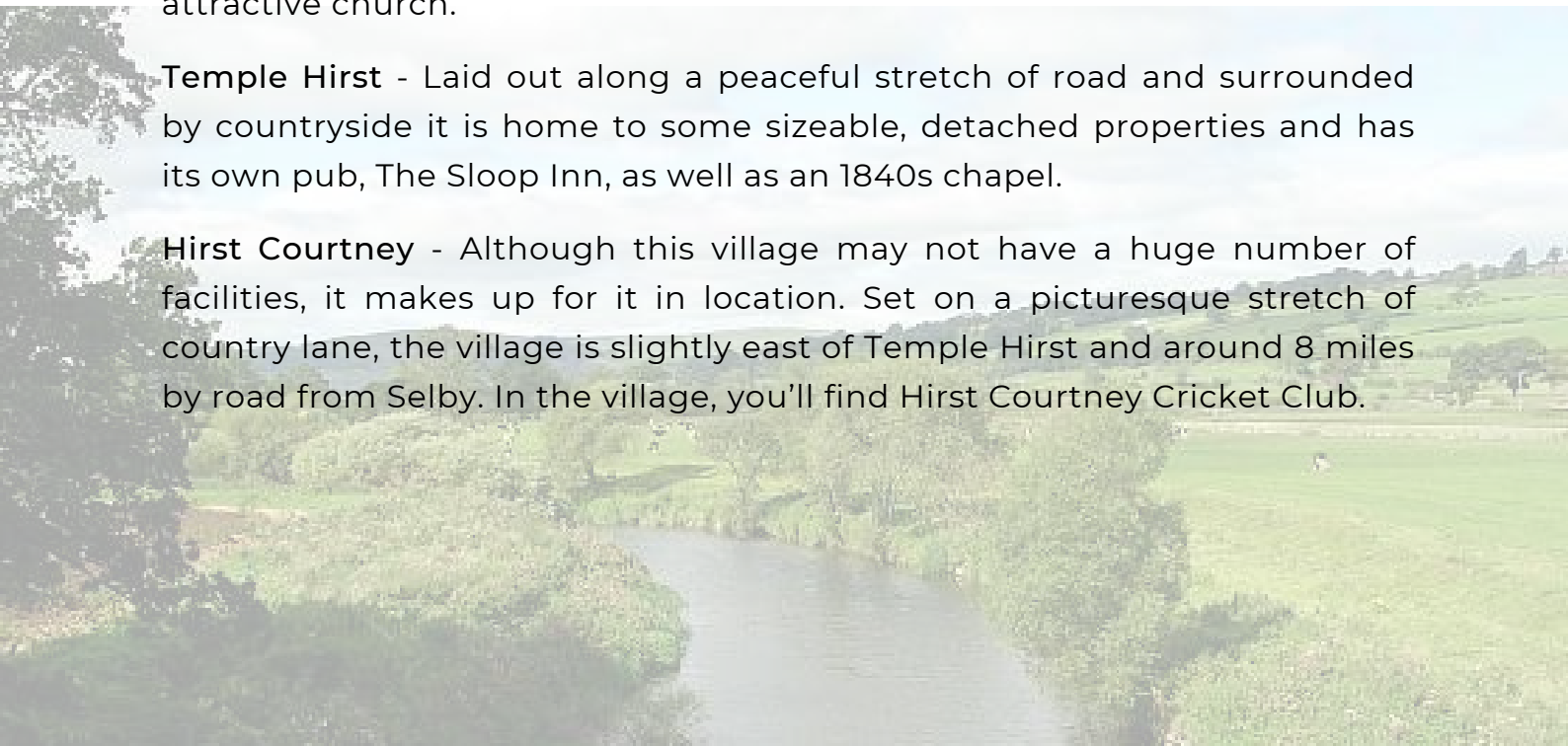
In the 1960s a coal-fired power station was built, which brought mining and additional jobs to the village. Mining for the power station closed in 2004, but it continued to run in some capacity until 2018 when it finally closed. There are now plans for a gas-fired power station on the same site.

Burn - Set on the A19 around 3 miles south of Selby, you'll find the tiny village of Burn. A mix of old and new housing, the village has a pub and a pretty bridge that crosses the Selby canal. It's also home to the highly rated Burn Gliding Club.

Chapel Haddlesey - Overlooking agricultural land this is a small village with traditional semi-detached housing, as well as character properties. Home to the quaint Jug Inn, the village also has a primary school and an attractive church.

Temple Hirst - Laid out along a peaceful stretch of road and surrounded by countryside it is home to some sizeable, detached properties and has its own pub, The Sloop Inn, as well as an 1840s chapel.

Hirst Courtney - Although this village may not have a huge number of facilities, it makes up for it in location. Set on a picturesque stretch of country lane, the village is slightly east of Temple Hirst and around 8 miles by road from Selby. In the village, you'll find Hirst Courtney Cricket Club.



Eggborough and Surrounding Villages

Hensall - Hensall has its own train station, which is on the Pontefract line, linking Leeds and Goole. It's a pleasant village, with a standout Anglican church. There's also a Post Office, Italian restaurant, cricket and football clubs, and Hensall Community Primary School.

Gowdall - With a population of around 350, Gowdall is a pretty village with some quirky properties. Its name means 'Nook of land where marigolds grow' in Old English. Nearby Snaith is easily accessible for its rail links.

Kellington - Here you'll find an attractive pub, The Red Lion, which sits at the centre of the village. There are a variety of residences here, from terraces to cottages, and new build developments. The village is also home to Kellington Primary School which is rated 'Good' by Ofsted.

Beal - The village offers residents a choice of two pubs, The Jenny Wren and The Kings Arms. Lying on the River Aire, it has a very pleasing outlook and there are a variety of housing styles including modern developments and quaint country homes.



Property & Demographics in Eggborough and Surrounding Villages

Eggborough itself is home to a variety of property types, from sleek and modern detached houses to traditional bungalows and character properties.

The market has seen an upward trend over the last 5 years, with average house prices in the DN14 postcode growing from an average of £150,000 in 2016 to £220,000 in 2021.

In the last year alone, the average price of a home here increased by over 13%, or £27,379. Eggborough also has a higher than average rate of homeownership.

There are a number of new developments in and around Eggborough, including plans for 'Teasel Green', which will see the construction of a range of 3, 4 and 5 bedroom homes.

The average age of Eggborough residents is slightly older than in the UK as a whole. However, the village entices many families, largely due to the reputable schools and semi-rural tranquility. The majority of residents fall in the working-adult age group, which is understandable, given the good commuter links and facilities on offer.



Average Property Prices: £220,809

Average Rent: £532 Per Calendar Month

Population of Eggborough: 1952 approx

Data from Zoopla

Schools and Colleges in Eggborough and Surrounding Villages

There are several primary and secondary schools rated as Outstanding by Ofsted, that are within easy reach of Eggborough. Most other schools for these age ranges are rated as Good. As well as this, there are two respected independent and special schools, and a grammar school. Post-18 education is available at the many universities nearby.

Nursery/Pre-Schools

Pollington Balne Preschool (Outstanding)
 Sticky Fingers Day Nursery (Good)
 Chapel Haddlesey Church of England
 Voluntary Controlled Primary School (Good)
 Fieldside Day Nursery (Good)
 Little Acorns Nursery Ltd (Good)

Primary Schools

The Vale Primary School (Outstanding)
 Pollington-Balne Church of England
 Primary School (Outstanding)
 Whitley and Eggborough Community
 Primary School (Good)
 Kellington Primary School (Good)
 Hensall Community Primary School (Good)

Secondary Schools

Castleford Academy (Outstanding)
 Campsmount Academy (Good)
 De Lacy Academy (Good)
 The Snaith School (Good)
 Sherburn High School Academy (Good)

Independent Schools

Read school
 Ackworth School

Special Schools

Oakfield Park School (Outstanding)
 High Well School (Good)



Castleford Academy



The Snaith School

Things to do in Eggborough and the Surrounding Area

Selby Abbey

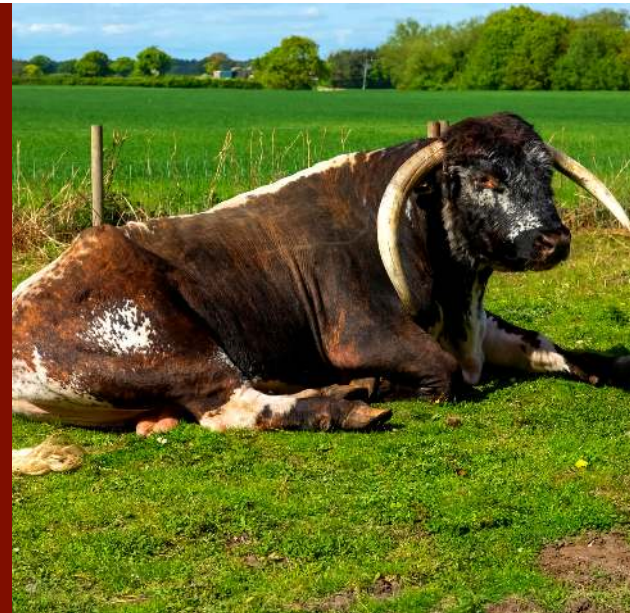
Selby is home to the stunning Selby Abbey, construction of which started as far back as the 11th century. Left to ruin in the 16th century, it took until the mid-1800s for repairs to begin, only for a fire to destroy the Abbey once more in 1906. Today, the fully restored Abbey is open for worship and visitors are invited to come and see the beautiful features for themselves. Entry is free and a guided tour can be enjoyed to learn more about the history of this fascinating building.

Old Mill Brewery, Snaith

In the small town of Snaith, there is a big boon for beer fans. For almost thirty years, the Old Mill has been brewing its own brand of real ales for visitors and retail. A family-owned business that is confidently led by chief-brewer Ryan Truswell, this brewery has a trusted reputation for quality and innovation. If you decide to visit, you can take a brewery tour to see how the family maintains its traditional techniques of beer production. You can sample the brewery's ales, and of course, you can take some of your favourite beers home with you.

Skipwith Common

Skipwith Common is a 270-hectare site North-East of Selby which is home to a wide variety of plants and animals. This is one of few remaining sections of northern lowland heath in the UK and is managed by Escrick Park Estate and Natural England to preserve the rare species for future generations. Walking around the well-maintained trails visitors will see ponds, reed-beds, and woodland terrains. There are also ancient Iron Age burial mounds still visible. Walkers may encounter longhorn cattle, Hebridean sheep, deer, and sometimes Exmoor ponies while exploring this local gem.



Farmer Copley's

Farmer Copley's in Pontefract is a multi-activity day out where adults and kids can enjoy spending time together in the great outdoors. A real family-favourite, every summer guests are invited to pick their own strawberries, selecting from the many varieties that are grown here. A kid-sized corn maze is open from July to September, and there are regular events year-round, including pumpkin picking, tractor rallies, dog shows, and more. Add to that the delicious and beautifully presented afternoon teas served in the onsite 'Moo Cafe' and you couldn't ask for more.

Things to do in Eggborough and the Surrounding Area

Yorkshire Air Museum

Around 20 miles from Eggborough is the Yorkshire Air Museum and Allied Air Forces Memorial. Yorkshire's highly recommended aviation museum, visitors can explore the vast aircraft hangar, study up-close reconstructions of key aircraft from the second world war, and see a Bomb Command exhibition. Visitors can even walk around an original command tower, seeing the typical equipment that would have been used during wartime.



Brodsworth Hall and Gardens

Managed by English Heritage is this beautiful Victorian country estate, located just outside Doncaster. The interior has been lovingly restored back to its 1860s glory, when it was kitted out for the Thellusson family. There are wonderful listed gardens to explore, as well as a rose garden, and afternoon tea can be taken at the onsite cafe.

Pontefract Racecourse

Directly west of Eggborough is Pontefract Racecourse. Less famous than its York counterpart, but just as exciting, this is a place for dressing up and enjoying a day at the horse races. VIP private boxes are available for those really special occasions and a variety of hospitality packages are available. Popular theme days take place here, including A Very Yorkshire Raceday, Ladies Day, and occasionally, a beer festival.



Park Lodge Shooting School and Spa

Park Lodge is a great venue if you're looking for a day out with a difference. Set in 44 acres of grounds, novice and expert shooters alike can enjoy practicing clay shooting in a stunning environment. If shooting isn't your thing, or you want to relax after a hard morning on the range, you can also enjoy the onsite spa. With a long menu of treatments, massages, and therapies, this is a great place for a pamper afternoon for yourself, or as a treat for that special someone.

"On the doorstep is the Warhorns Festival, an annual event running for the last 9 years that showcases Viking, Black, Folk, Death & Doom Metal!"

Shopping & Leisure in Eggborough and the Surrounding Area



Shopping

Eggborough provides residents with all the essential everyday shops, including a Londis and a village store. There is also a post office, a pharmacy, and on the outskirts of the village, a homewares shop. For larger shops and high street brands, the towns of Snaith and Selby are only a few miles away, and Goole and Pontefract can be reached in less than 20 minutes.

Eating Out

There are a number of eateries in Eggborough. There's a traditional village fish and chip shop, as well as a cafe called 'Crumbs'. There's a handy takeaway, and the Horse and Jockey pub which serves food. Chain restaurants can be found in other towns and cities within easy reach of the village.

Pubs & Nightclubs

The Horse and Jockey is the only pub in Eggborough, but it's a well-rated and well-used part of the community. Several smaller villages in the surrounding area also have country pubs serving up traditional ales and home-cooked food. A more comprehensive selection of pubs and nightlife can be found in nearby Pontefract and Goole.



"Eggborough is somewhat of a paradox. The village itself lies within 'North Yorkshire'. It has a Doncaster postcode, which is in South Yorkshire. And its phone dialling code is for Pontefract, which is in West Yorkshire!"

Shopping & Leisure in Eggborough and the Surrounding Area



Cinema

The nearest cinema to Eggborough is the Selby Community Cinema, which is a not-for-profit venue, showing a variety of classic and new release films. There's a Cineworld multiplex cinema in Castleford, around 10 miles away. Goole has a multi-functional arts space at the popular Junction Theatre, which has regular theatre shows and classes, as well as a cinema.

Gym and Health

There are several gyms and leisure centres to choose from in and around Eggborough. There's the Eggborough Sports and Social Club, which has a games room with snooker and pool, a 9-hole golf course, a bowling green, as well as cricket and football pitches. In Selby, there's DW Fitness First and Lion Fitness, both independent gyms offering equipment, free weights, and classes. There are CrossFit training centres in Goole and Pontefract. Askern Leisure Centre has a swimming pool and is less than a 15 minutes drive from Eggborough.

Golf Clubs

Eggborough is well-placed for access to golf clubs. The closest is at Darrington Golf Club, about 6 miles away. Priding itself as a friendly club, Darrington is an attractive 18-hole course with a driving range and a clubhouse. Other golf clubs in the vicinity include Drax Golf Club, Whitwood Golf Club in Pontefract, and Thorne Golf Club.



Other Entertainment

Castleford has a ten-pin bowling alley, for a night of family entertainment. Other nearby towns with bowling are Selby Superbowl, or Tenpin Doncaster. And fans of skating will love Planet Ice in Leeds for ice skating, or Fusion Skating, a roller skating rink located in Wakefield.

Travel Connections

Eggborough is extremely well located, being almost equidistant between the two major northern cities of Leeds and York. The village is close to major roads, and only a couple of miles from the M62 which links Hull and Liverpool. There's a limited train service from nearby Whitley Bridge's railway station and several bus routes serve the town, linking it with larger towns and cities in the area.

"You can pick up some more obscure dance skills in Eggborough, including Cuban Salsa and Modern Jive."



Eggborough residents can access the nearby Whitley Bridge train station, which has a limited service to Leeds and Goole each day. From the nearest major station at Doncaster (13.9 miles away), it's a direct 1hr 45min journey to London King's Cross or from Leeds (23.5 miles away) the journey direct to London is 2hrs 15 mins.



For a fast commute between towns and cities in the north, the M62 motorway runs just south of Eggborough and takes only a couple of minutes to join. The A19, which links the M62 with Selby, runs through Eggborough, Selby and Hull, which also connects them with junction 42 of the A1(M) giving easy access to the M1 and M62.



Leeds Bradford Airport is around 32 miles and a 50 minute drive away. The closest London airport is Luton, a 2 hour 40 minute drive.



There are four bus stops in Eggborough, with the following routes serving the village:

- 405 Selby-Doncaster
- 476 Selby-Pontefract
- S76 Selby-Pontefract

JP HARLL



24 Finkle Street
Selby
North Yorkshire
YO8 4DS

Telephone: 01757 709955



[By Email](#)



[Online](#)



[By Phone](#)



"All the staff were friendly but professional at all times. We knew we chose the right company to market and sell our house. We are sure that your reputation locally will help you grow over the next few years. We always felt that we could ask any questions no matter how trivial it may have been."

Mrs D. Brayton

[REQUEST A
VALUATION](#)